



## 113 Main Street, Huthwaite – NG17 2LQ

Guide Price £110,000



## 113 Main Street

Huthwaite, Sutton-In-Ashfield

Refurbished 2 bed mid-terrace with no chain. Modern kitchen, spacious lounge and dining room, stylish bathroom, gas central heating, UPVC windows, garden, near Huthwaite amenities and transport.

Council Tax band: A

Tenure: Freehold

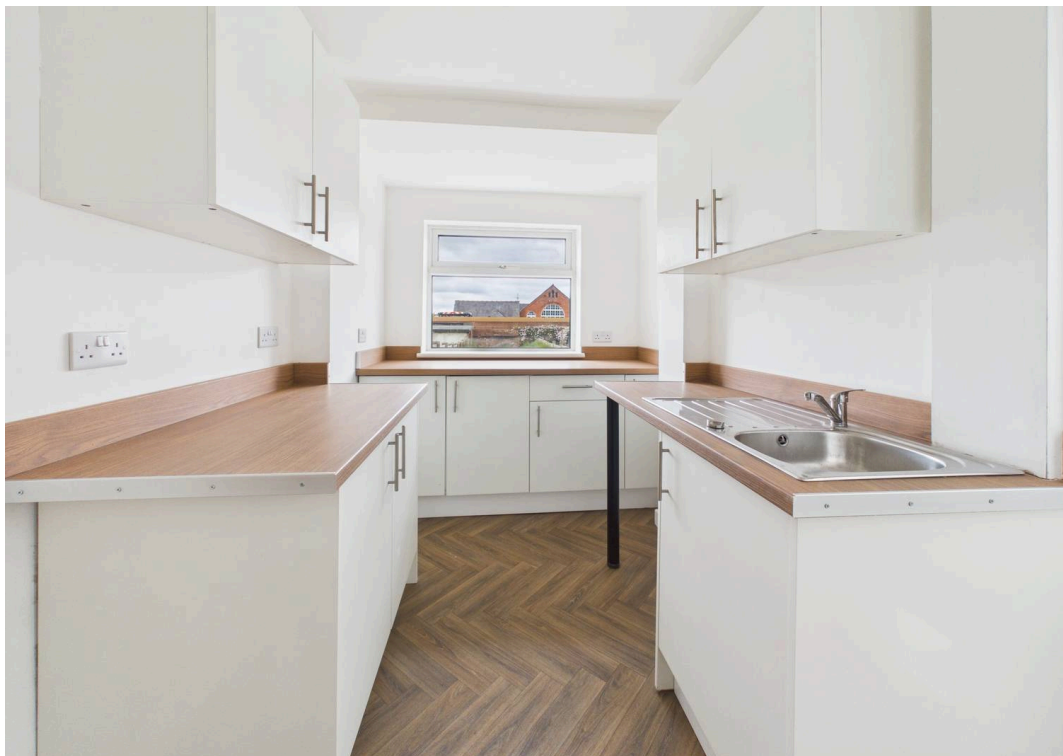
EPC Energy Efficiency Rating: C

EPC Environmental Impact Rating: D

- Refurbished mid terraced house sold with no upward chain
- Two double bedrooms
- Lounge with laminate flooring
- Dining room with understairs storage and laminate flooring
- Modern kitchen with a range of white units and timber finish worktops
- First floor bathroom/Wc with white suite, shower off mixer taps and feature marble finish tiling
- Combination gas central heating, UPVC double glazing
- Freshly decorated throughout
- Good sized rear garden
- Close to Huthwaite's amenities









**Approximate total area<sup>(1)</sup>**  
64.3 m<sup>2</sup>  
691 ft<sup>2</sup>



(1) Excluding balconies and terraces

Reduced headroom  
----- Below 1.5 m/5 ft

Calculations reference the RICS IPMS 3C standard. Measurements are approximate and not to scale. This floor plan is intended for illustration only.

GIRAFFE360





## David James Estate Agents

43 Forest Street, Sutton-in-Ashfield - NG17 1DA

01623 554084 • [sutton@david-james.com](mailto:sutton@david-james.com) • [www.david-james.com](http://www.david-james.com)

These particulars are produced in good faith and are set out as a general guide only. Measurements are approximate and floor plans are for illustrative purposes only. Services have not been tested. We have established professional relationships with third-party suppliers for the provision of services to Clients, details of which can be found on the property listing page on our website.