




Holdens
ESTATE AGENTS

1 Ribble Close, Withnell
£1,400 pcm


Holdens
ESTATE AGENTS



1 Ribble Close

Withnell, Chorley

Council Tax band: D

Tenure: Freehold

EPC Energy Efficiency Rating: C

EPC Environmental Impact Rating: D

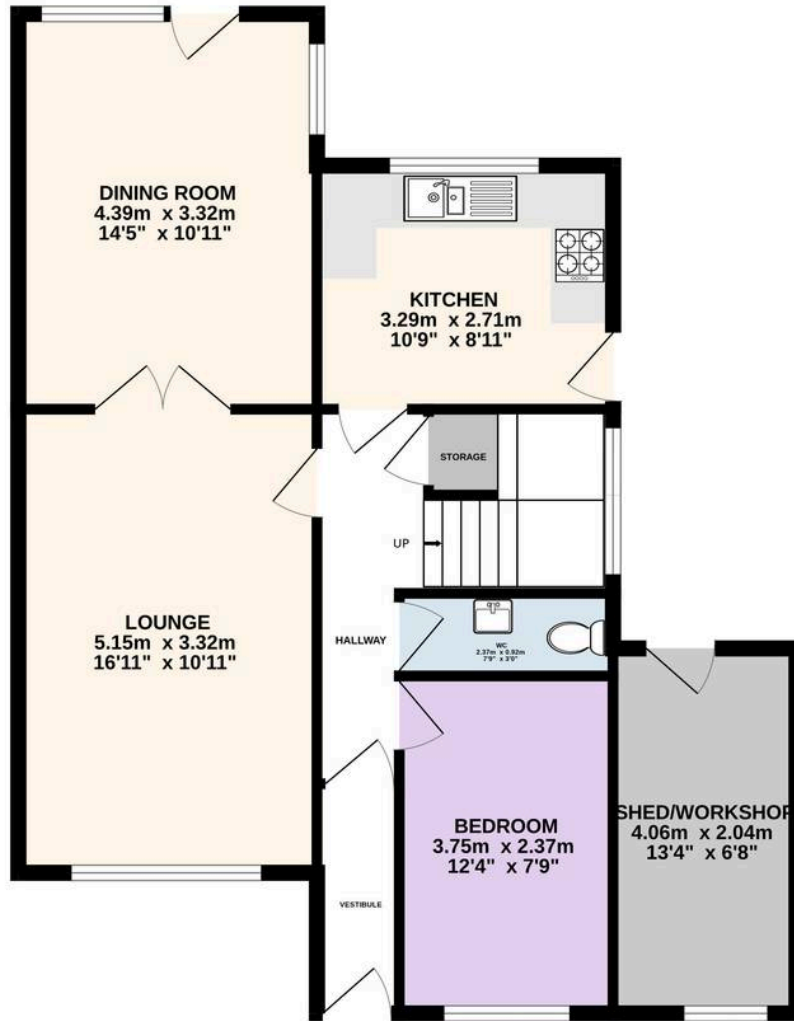
- Detached family home
- Four bedrooms
- Superb fitted kitchen
- Two reception rooms
- Downstairs cloaks
- Gas central heating
- Council tax band D
- Double garage
- Mature gardens to front, side and rear.
- Envious Cul De Sac location



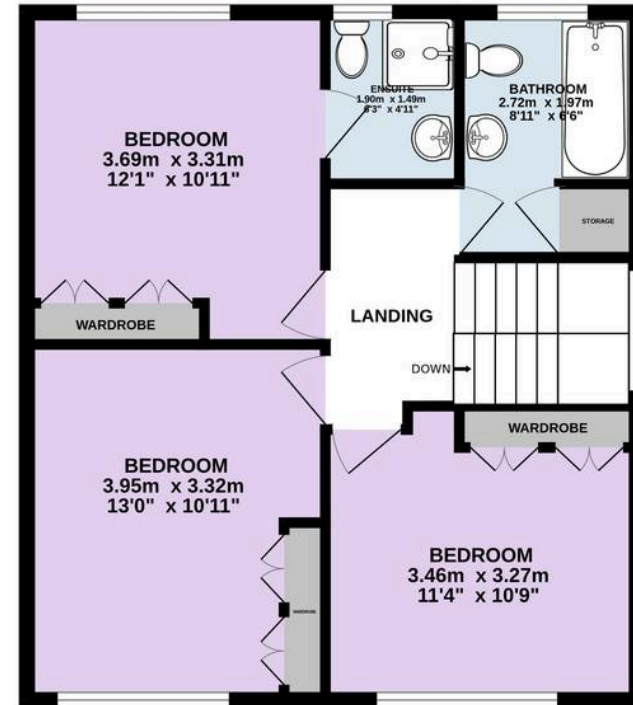




GROUND FLOOR
70.9 sq.m. (763 sq.ft.) approx.



1ST FLOOR
51.8 sq.m. (557 sq.ft.) approx.



TOTAL FLOOR AREA : 122.7 sq.m. (1320 sq.ft.) approx.

Every attempt is made to ensure accuracy, however all measurements are approximate. This plan is for illustrative purposes only and is not to scale.
Made with Metropix ©2026



Holdens Lostock Hall

Holdens Estate Agents, 6 Watkin Lane - PR5 5RD

01772 698888

lostockhall@holdens.co.uk

www.holdens.co.uk/

Disclaimer: All information such as plans, dimensions, and details about the property's condition or suitability is provided in good faith and believed to be accurate, but should not be relied upon without independent verification. Buyers or tenants must carry out their own checks. Appliances and systems haven't been tested. It's strongly advised to get professional inspections before making any commitments. No employee or agent of Holdens Estate Agents is authorised to make promises or guarantees about the property. These details are for general guidance only and do not form part of any contract. All discussions with Holdens Estate Agents are subject to contract.