



## Withy Bush, Burgess Hill

Offers in Region of £365,000

# Withy Bush

## Burgess Hill

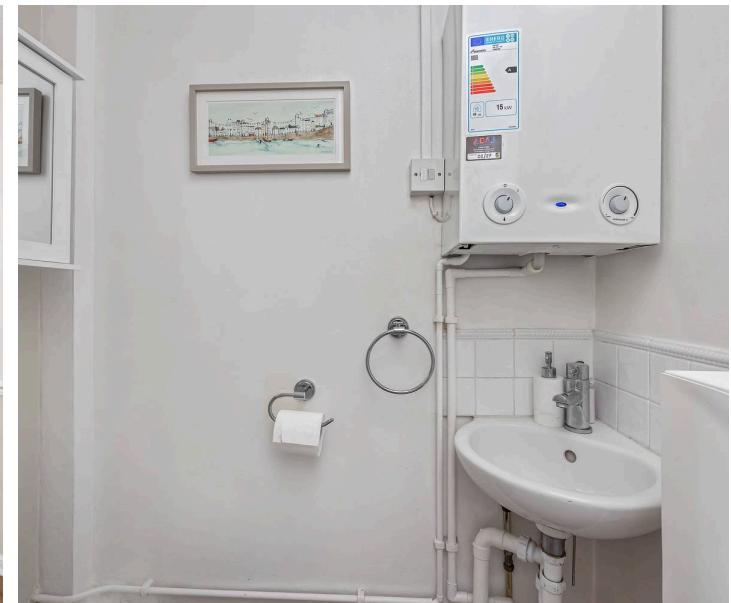
Henry Adams are delighted to present to the market this well presented two double bedroom end of terraced home, situated in the popular West End Meadows development in Burgess Hill.

The property is presented to the market in superb condition, and is ideally positioned in an enviable cul de sac location, ideal as a first time purchase or for someone looking to downsize

Internally, the property comprises from an entrance hall with a downstairs WC to the front. This leads through into a bright and spacious lounge, with a beautiful bay window to the front, flooding the room with light. There is also a feature fireplace and surround, creating a focal point to the room and an additional area by the stairs, ideal for storage or an office space. This leads through to a large and well equipped kitchen offering ample work top space, a range of integrated appliances and space for further white goods. The kitchen is open plan and leads onto the conservatory, currently used as a dining area and the ideal entertainment space.

On the first floor, the property boasts a large master bedroom to the front, with a range of fitted wardrobes and built in storage space. There is also a second double bedroom to the rear, which also has built in storage space. The accommodation is complete with a white suite family bathroom, offering both bath and shower facilities.

EPC Environmental Impact Rating: D









Externally, the property has a private rear garden, which is laid to patio, with a border of mature shrubs and bushes. There is also gated side access. To the front of the property, there is a driveway for 2 cars, with a garage en bloc to the side and further visitor bays to the front.

Situated in this sought after cul de sac location, there is a range of amenities within easy reach which include The Triangle Leisure Centre, a range of local shops and supermarkets, and the nearby A23 which offers quick and easy access for commuters travelling to Brighton, Gatwick, or London.

Burgess Hill town centre offers a wide variety of amenities, including a Waitrose supermarket, independent shops, cafés, restaurants, and further leisure facilities.

Council Tax band: C

Tenure: Freehold

EPC Energy Efficiency Rating: D

**Entrance Hall**

**WC**

**Lounge**

**Kitchen**

**Conservatory**

**First Floor Landing**

**Bedroom One**

**Bedroom Two**

**Family Bathroom**





GROUND FLOOR

FIRST FLOOR

### Withy Bush

Approximate Area = 751.86 sq ft / 69.85 sq m  
 Garage = 146.71 sq ft / 13.63 sq m  
 Total = 898.57 sq ft / 83.48 sq m  
For identification only - not to scale





## Henry Adams – Haywards Heath

Henry Adams HRR Ltd, 1 Park Parade,, Haywards Heath – RH16 4LX

01444 458380

[haywardsheath@henryadams.co.uk](mailto:haywardsheath@henryadams.co.uk)

[www.henryadams.co.uk/](http://www.henryadams.co.uk/)

Agents Note – Our particulars are for guidance only and are intended to give a fair overall summary of the property. They do not form part of any contract or offer, and should not be relied upon as a statement or representation of fact. Measurements, areas and distances are approximate only. Photographs may include lifestyle shots and pictures of local views. No undertaking is given as to the structural condition of the property, or any necessary consents or the operating ability or efficiency of any service, system or appliance. Please ask if you would like further information, especially before you travel to the property.