



Flat 7 The Paragon, Tenby

£350,000 Share of Freehold

Two Bedroom apartment • Sea Views • Open Plan Kitchen/Living space • Town centre location • Two Bathrooms • Secured on site parking





Presenting an exceptional opportunity to acquire a contemporary two-bedroom apartment situated in the heart of the town centre, this beautifully appointed property offers a harmonious blend of modern living and convenience. Upon entering, you are welcomed by a spacious hallway leading to an impressive open plan kitchen and living space, thoughtfully designed to maximise natural light and accentuate the breathtaking sea views visible through large windows.

The kitchen is equipped with a range of high-quality fitted units, integrated appliances, and ample workspace, making it ideal for both every-day living and entertaining guests. The living area provides a comfortable setting for relaxation, with the picturesque outlook serving as a striking backdrop.

Both bedrooms are generously proportioned, with the principal bedroom benefitting from its own en suite bathroom, featuring contemporary fixtures and a sleek finish. The second bedroom is equally well-sized and conveniently positioned adjacent to the main bathroom, which is finished to a high standard with modern fittings and tasteful tiling.

Throughout, the apartment is presented in excellent decorative order, with neutral tones and quality materials creating a welcoming and stylish atmosphere. Additional features include secure entry, efficient heating, and double glazing for comfort and peace of mind. Ideally located, this apartment places you within immediate reach of an array of shops, restaurants, and amenities, as well as excellent transport links for easy access to surrounding areas. This property represents an outstanding choice for professionals, downsizers, or those seeking a well-located home with stunning sea views and contemporary comforts. Early viewing is highly recommended to fully appreciate the quality and lifestyle on offer.

Council Tax band: G

Tenure: Share of Freehold



Lounge

20' 8" x 17' 5" (6.30m x 5.31m)

Kitchen

12' 10" x 17' 5" (3.91m x 5.31m)

Bedroom

12' 6" x 13' 6" (3.81m x 4.12m)

Bedroom

13' 10" x 11' 8" (4.22m x 3.56m)

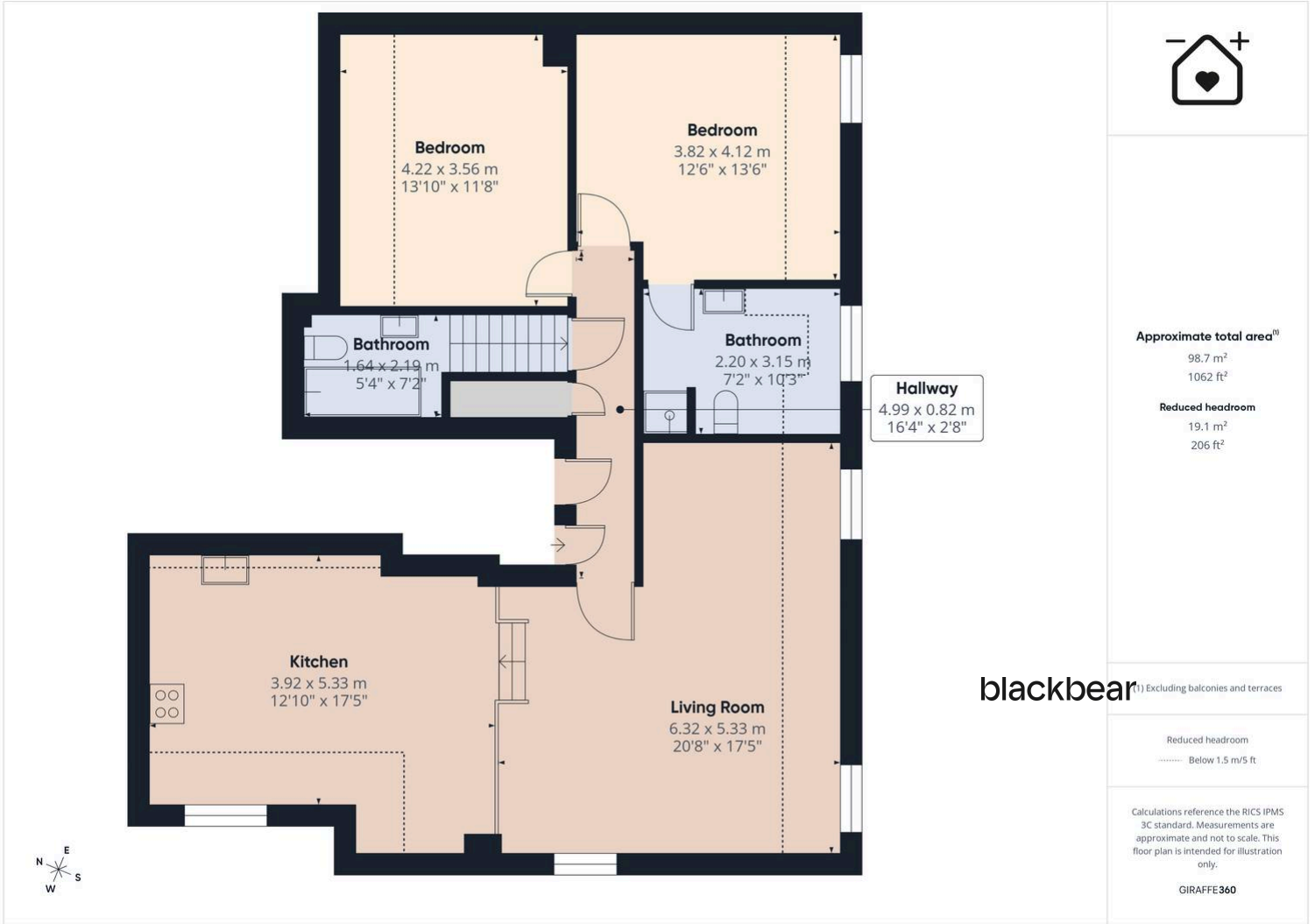
Bathroom

5' 4" x 7' 2" (1.63m x 2.18m)

En Suite

7' 2" x 10' 3" (2.18m x 3.12m)





You can include any text here. The text can be modified upon generating your brochure.

