



44 Bow Green Road, Bowdon
Altrincham

£1,550,000

**GASCOIGNE
HALMAN**

THE AREA'S LEADING ESTATE AGENCY



44 Bow Green Road

Bowdon, Altrincham

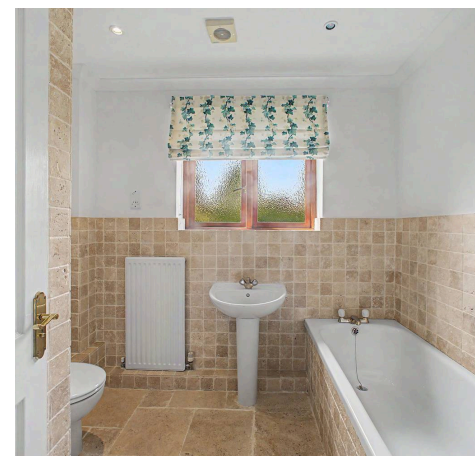
Spacious six-bedroom, three-bathroom detached home in Bowdon with multiple reception rooms, open-plan kitchen, double garage, gated driveway, landscaped gardens, and high-quality finishes throughout.

Council Tax band: H

Tenure: Freehold

- Six Bedrooms
- Three Bathrooms
- Desirable location of Bowdon
- Generous Private Garden
- Gated Driveway & Double Garage
- ¼ Acre Garden Plot

Situated in the sought-after area of Bowdon, this detached residence presents an excellent opportunity for families seeking space and practicality. The property features six generous bedrooms, three bathrooms, and a well-designed layout.



44 Bow Green Road

Bowdon, Altrincham

Upon entering, a welcoming hallway leads to a range of reception rooms. At the heart of the home is an open-plan kitchen and breakfast room, ideal for everyday living and entertaining, supported by a separate utility room. The ground floor also includes a dining room, a dedicated study, a sitting room, and a spacious lounge that opens into a sun room. A downstairs WC adds further convenience to the layout. While the property has been well-maintained, it also offers a fantastic opportunity for buyers looking to put their own stamp on a home, with scope for cosmetic updates or modernising elements such as the windows.

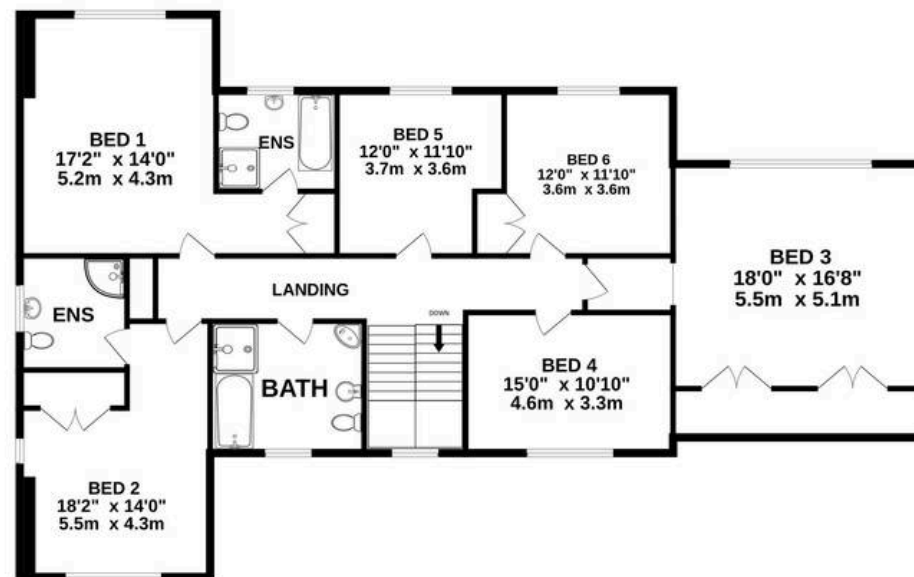
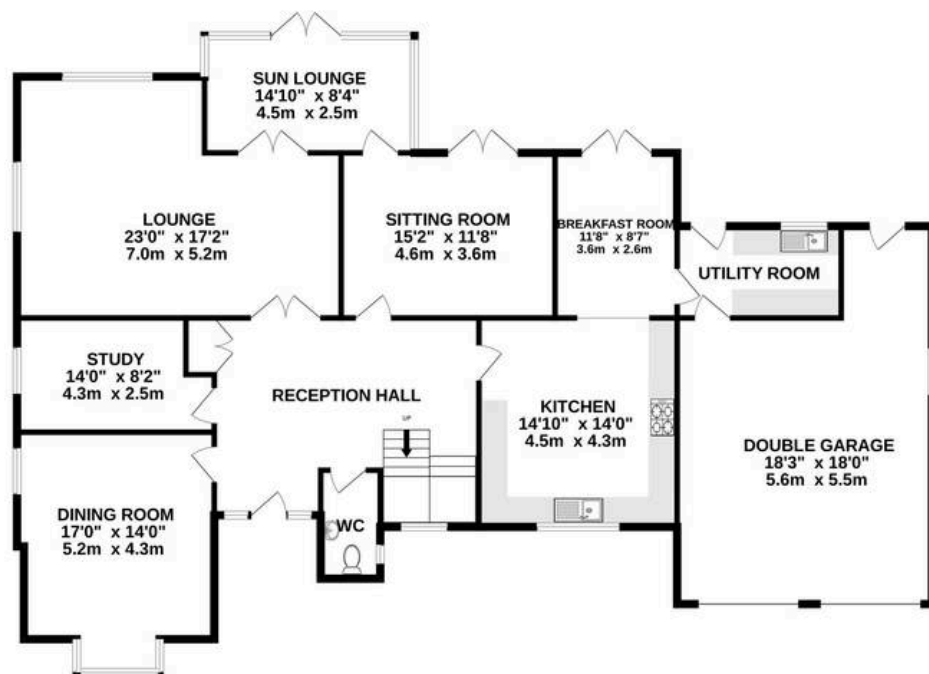
Upstairs, there are six bedrooms in total with two bedrooms benefiting from en-suite facilities, while the remaining four bedrooms are served by a family bathroom.

Outside, a gated driveway and a double garage provide ample parking and storage. The property sits within established front and rear gardens that offer good privacy and measure just over $\frac{1}{4}$ acres in size. Located in a desirable Bowdon neighborhood, the home provides easy access to local amenities, reputable schools, and transport links.



GROUND FLOOR

1ST FLOOR



TOTAL FLOOR AREA : 3772 sq.ft. (350.4 sq.m.) approx.

Whilst every attempt has been made to ensure the accuracy of the floorplan contained here, measurements of doors, windows, rooms and any other items are approximate and no responsibility is taken for any error, omission or mis-statement. This plan is for illustrative purposes only and should be used as such by any prospective purchaser. The services, systems and appliances shown have not been tested and no guarantee as to their operability or efficiency can be given.

Made with Metropix ©2026



THE AREA'S LEADING ESTATE AGENCY