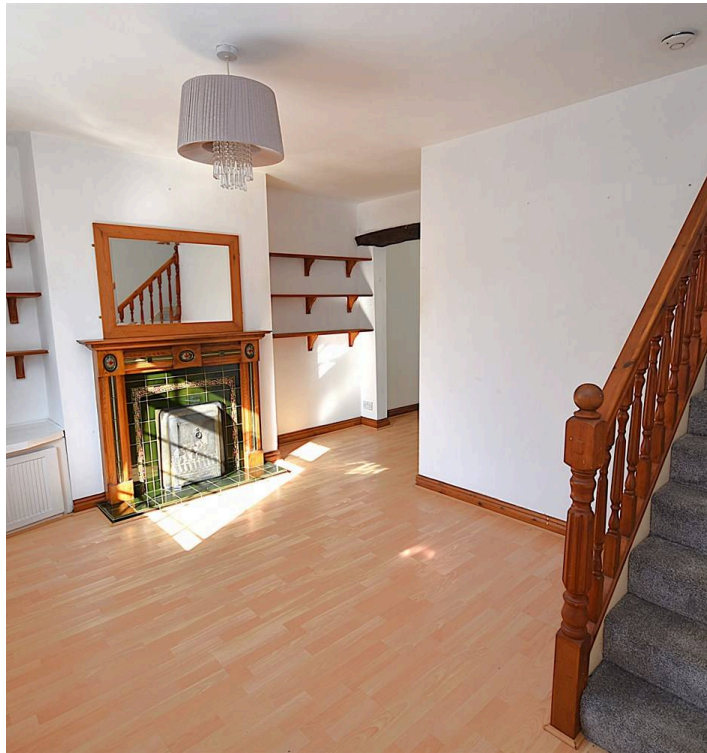


15 Palmerston Street, Bollington
Macclesfield

Offers Over £200,000

**GASCOIGNE
HALMAN**

THE AREA'S LEADING ESTATE AGENCY



15 Palmerston Street

Bollington, Macclesfield

A two double bedroom end cottage property with accommodation over three floors, which includes a converted cellar.

The property is situated in this lovely sought after position in Bollington, being warmed by gas fired central heating and having UPVC double glazing.

Accommodation comprises of a lounge with stairs to the first floor, feature fireplace housing a living flame gas fire. To the rear there is a dining kitchen fitted in a matching range of white fronted units, on the lower ground floor there is a TV room and study, whilst on the first floor there is a landing with a range of built in cupboard, loft access two double bedrooms and a bathroom with a shower over the bath.

Outside the property does not have a rear garden which is ideal for somebody who wants an easily maintainable property.

Council Tax band: B

Tenure: Leasehold

EPC Energy Efficiency Rating: D

EPC Environmental Impact Rating: D

- Great Location In Bollington.
- Offers For Sale With No Onwards Chain.
- A Two Double Bedroom End Cottage.
- Accommodation Over Three Floors With Converted Cellars.

