



Flat 1, Forest Road West, Nottingham
£845 pcm

 **Comfort**
Estates



Flat 1

Forest Road West, Nottingham

Comfort Estates are pleased to present this spacious one-bedroom apartment located on Forest Road West, available now and offered unfurnished.

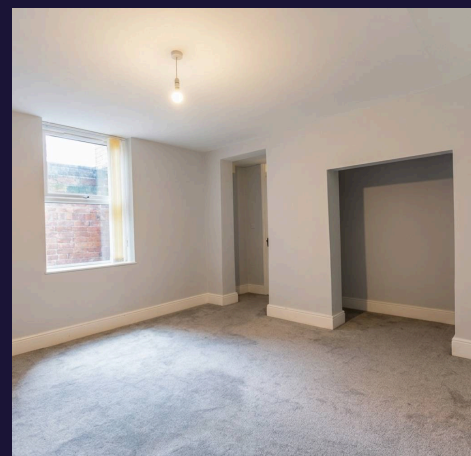
Accessed via a private entrance on the ground floor, the property opens into a welcoming hallway which leads through to each room within the apartment. The accommodation comprises a bright open plan living area with a modern kitchen complete with integrated appliances, a large double bedroom and a contemporary bathroom.

To the rear of the apartment is a spacious, private courtyard with bench seating, providing an ideal outdoor space to relax and enjoy the warmer months.

On-street permit parking is available if required.

The property is ideally situated within walking distance of a wide range of local amenities, as well as several popular green spaces including the Arboretum and Forest Recreation Ground. Nottingham City Centre is also easily accessible by public transport or on foot.

Available now, this spacious apartment would be ideal for a professional single occupant or couple.





Bedroom – 13' 10" x 12' 3" (4.22m x 3.73m)

A spacious double bedroom finished with grey walls and carpeted flooring, creating a cosy and modern feel. The room also benefits from a built-in alcove, ideal for additional storage or for adding a clothes rail to create a wardrobe space.

Bathroom – A bright and modern bathroom fitted with a shower over the bath, WC, wash basin, heated towel rail and wall-mounted mirror. Stylish blue and white mosaic-effect flooring is complemented by white subway tiles surrounding the shower area, creating a fresh and contemporary finish.

Kitchen – Modern kitchen fitted with white gloss wall and base units offering ample storage, complemented by contrasting dark worktops providing plenty of preparation space. The kitchen is fully equipped with integrated appliances including a fridge, freezer, dishwasher, washer/dryer, electric hob and oven, creating a sleek and practical space for everyday living.

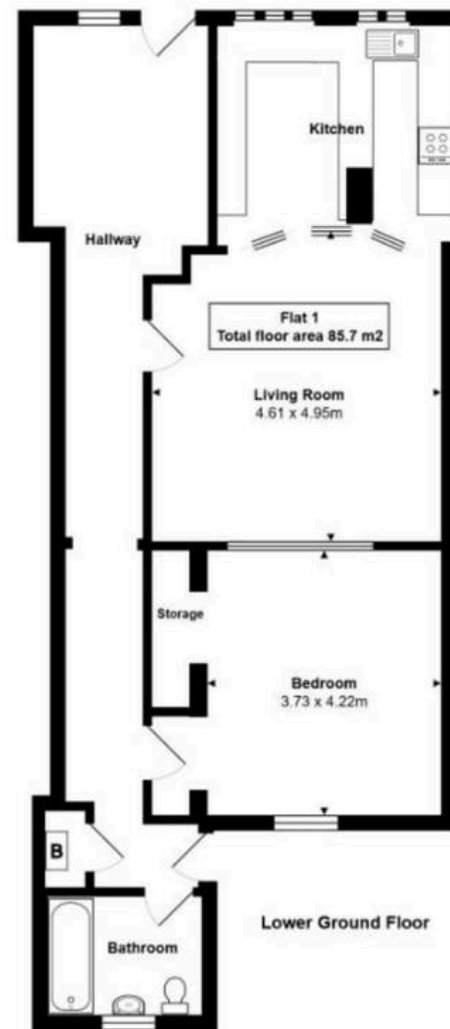
Living Area – 16' 3" x 15' 1" (4.95m x 4.61m)

A spacious living area finished with grey walls and carpeted flooring, creating a modern and comfortable space. The lounge flows seamlessly into the kitchen area, providing an inviting open-plan layout with plenty of room for sofas and a dining area.

Hallway

Upon entering the property, you are welcomed into an open hallway with a reception area which stretches through to the rear of the apartment, providing access to the garden area. All rooms are accessed directly from the hallway, which also benefits from a built-in cupboard housing the boiler.







Comfort Estates

Comfort Estates, 47 Derby Road - NG1 5AW

0115 933 8997 • info@comfortestates.co.uk • www.comfortestates.co.uk