



17 Dunnock Road, Harlow
Harlow

Guide Price £275,000



17 Dunnock Road

Harlow

Situated in the heart of Gilden Park is this stunning two bedroom second floor apartment offering easy access to Harlow Mill Station.

- Great Location
- Two Bedroom Apartment
- Two Allocated Parking Spaces
- Open Plan Lounge/Kitchen
- Close To Harlow Mill Station
- Stunning Condition Throughout





Internal accommodation offers two double bedrooms (master with fitted wardrobes), a spacious open plan lounge/kitchen with a range in fitted appliances and family bathroom.

Externally, the apartments comes with two allocated parking spaces.

The property is set within easy access to M11, Epping Train Station & Harlow Mill Train Station, both of which offer direct links to London Liverpool Street.

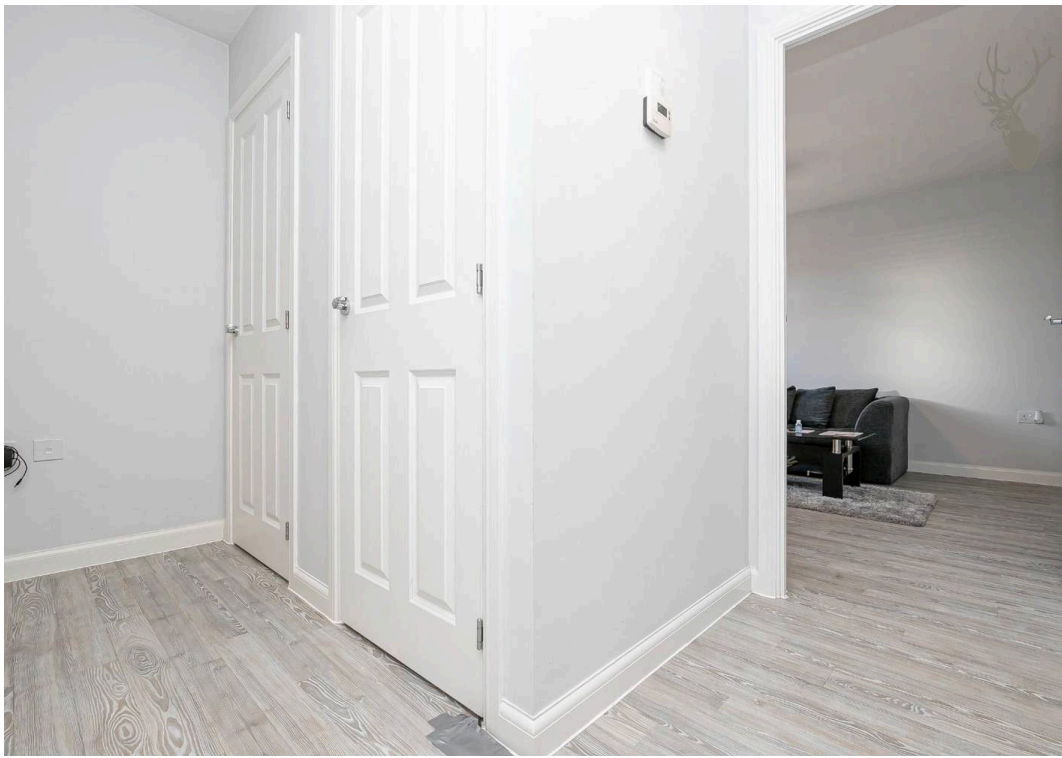
Council Tax band: C

Tenure: Leasehold

EPC Energy Efficiency Rating: B

EPC Environmental Impact Rating: B



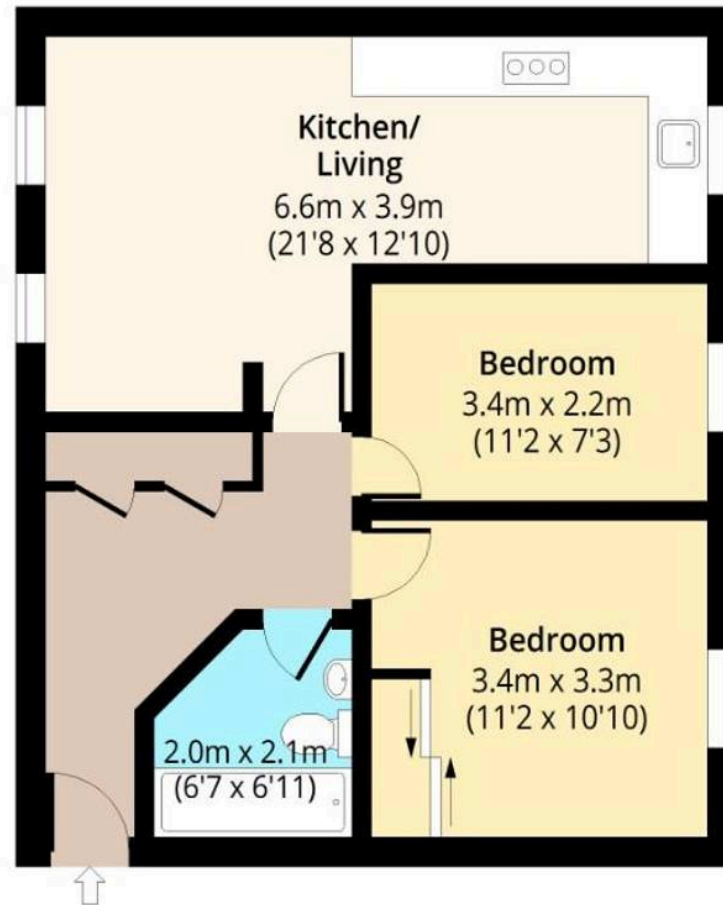




Dunnock Road, CM17

Second Floor

Approx. 54.25 Sq. meters (584 Sq. feet)



Total area: approx. 54.25 Sq. meters (584 Sq. feet)

For illustration purposes only - not to scale

www.lpaplus.com

FROM EAST LONDON ENERGY TO WEST ESSEX EASE

We Make Moving Home Easy.

At Butler and Stag, we do more than just connect London to West Essex – we make the move seamless. With offices spanning from vibrant East London to the tranquillity of West Essex, we understand the nuances of each area and the journey people take between them. Our marketing goes beyond standard listings, showcasing every property with precision, creativity, and reach that others simply can't match. Coupled with an unparalleled attention to detail, from first enquiry to final move-in, we ensure every client and customer feels informed, supported, and confident. Simply put, we do the little things that make a big difference, setting us apart in every step of the property experience.



LONDON STRATFORD SOUTH WOODFORD BUCKHURST HILL LOUGHTON EPPING BEYOND

Like what you see? Let's talk

Book your **FREE** valuation now



01992 667666

theydon@butlerandstag.com

4 Forest Drive, Theydon Bois, CM16 7EY

[butlerandstag.uk](https://www.butlerandstag.uk)

IMPORTANT NOTICE - These particulars have been prepared in good faith and they are not intended to constitute part of an offer or contract. We have not performed a structural survey on this property and the services, appliances and specific fittings have not been tested. All photographs, measurements, floor plans and distances referred to are given as a guide and should not be relied upon.

BUTLER & STAG

