

Flat 70, Omega Court, 140 London Road  
Romford

In Excess of £290,000



## Flat 70

Omega Court, Romford

Situated within the sought-after gated development of Omega Court, this impressive three double bedroom duplex apartment offers an incredible 1,158 Sq. ft. of well-designed living space, combining modern comfort with excellent commuter convenience in the heart of Romford.

- Open Plan Lounge/Kitchen/Diner
- 0.5 Miles From Romford Station (Elizabeth Line - Zone 6)
- Chain Free
- Substantial Duplex Apartment
- Garage
- 1158 Sq. Ft Of Accommodation Space
- Communal Gardens
- Private Balcony With Uninterrupted Views Over Cottons Park
- Three Double Bedrooms/Two Bathrooms
- Secure Gated Development



The property is thoughtfully arranged over two floors, beginning with a welcoming hallway leading to a bright and spacious lounge/dining room, opening onto a private balcony with uninterrupted views over Cottons Park —ideal for relaxing or entertaining. The separate fitted kitchen offers ample workspace and storage, designed for practical everyday use.

On the same level, there are two well-proportioned double bedrooms, including a generous bedroom which benefits from a stylish en-suite shower room. A modern family bathroom serves the remaining accommodation, all accessed via a central hallway that enhances the sense of flow and privacy.

The upper floor is dedicated to an impressive principal bedroom, creating a superb retreat with excellent proportions and versatility.

Externally, the property benefits from a private garage, offering secure parking or valuable additional storage—an increasingly rare advantage in such a central location. Additional visitors parking also available within the development.

Perfectly positioned just 0.5 miles from Romford Station, residents enjoy fast and frequent transport links into London Liverpool Street, making it ideal for commuters. The development is also within easy reach of Romford town centre, providing a wide selection of shops, restaurants, schools, and local amenities.

This spacious duplex apartment represents an excellent opportunity for buyers seeking secure gated living, generous accommodation, and outstanding connectivity.

Council Tax band: C

Tenure: Leasehold

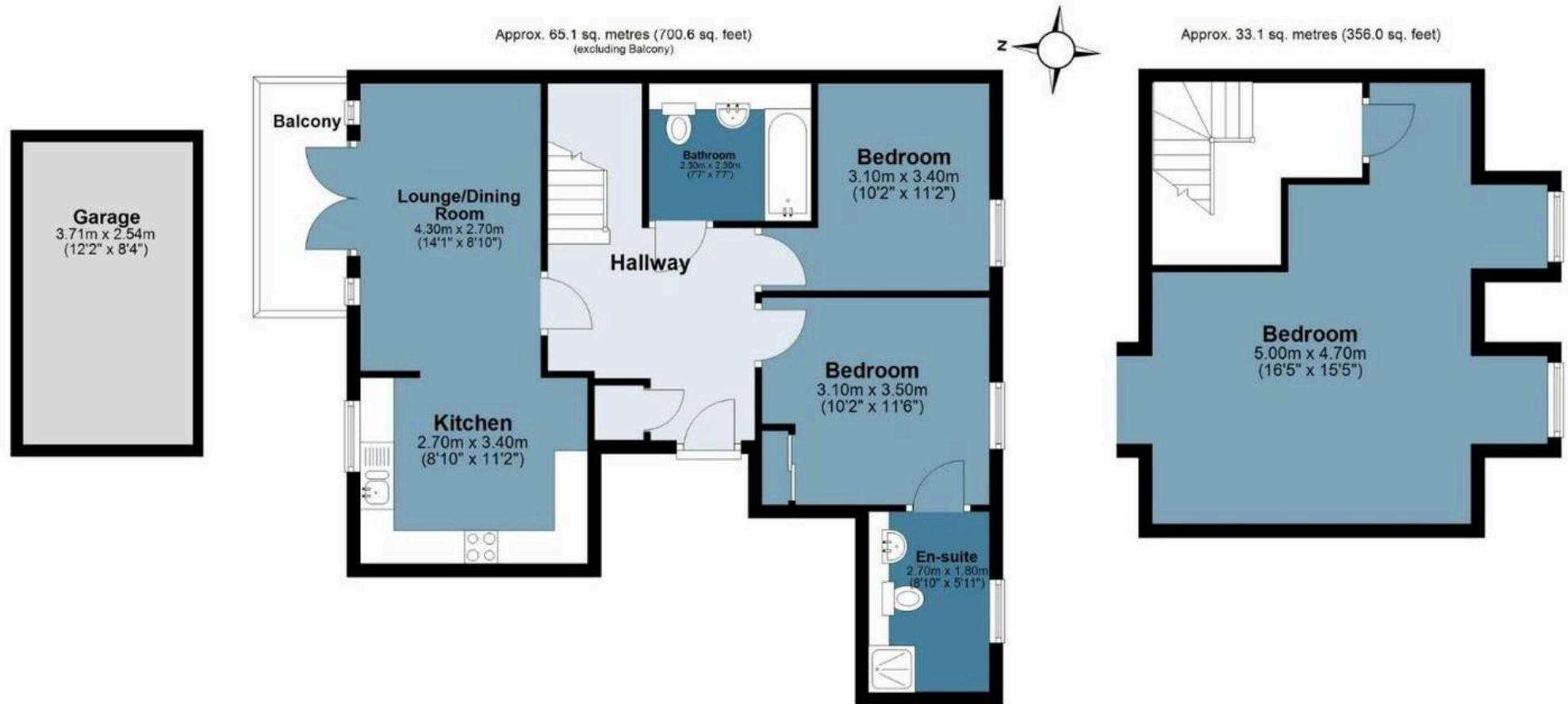






# Omega Court

Approx. Gross Internal Area 107.6 sq. metres (1158.4 sq. feet)



Measurements are approximate and for illustration purposes only. While we do not doubt the accuracy and completeness, we advise you conduct a careful independent assessment of the property to determine monetary value

# FROM EAST LONDON ENERGY TO WEST ESSEX EASE

## We Make Moving Home Easy.

At Butler and Stag, we do more than just connect London to West Essex – we make the move seamless. With offices spanning from vibrant East London to the tranquillity of West Essex, we understand the nuances of each area and the journey people take between them. Our marketing goes beyond standard listings, showcasing every property with precision, creativity, and reach that others simply can't match. Coupled with an unparalleled attention to detail, from first enquiry to final move-in, we ensure every client and customer feels informed, supported, and confident. Simply put, we do the little things that make a big difference, setting us apart in every step of the property experience.



LONDON   STRATFORD   SOUTH WOODFORD   BUCKHURST HILL   LOUGHTON   EPPING   BEYOND

# Like what you see? Let's talk

Book your **FREE** valuation now



01992 667666

theydon@butlerandstag.com

4 Forest Drive, Theydon Bois, CM16 7EY

[butlerandstag.uk](https://www.butlerandstag.uk)

IMPORTANT NOTICE - These particulars have been prepared in good faith and they are not intended to constitute part of an offer or contract. We have not performed a structural survey on this property and the services, appliances and specific fittings have not been tested. All photographs, measurements, floor plans and distances referred to are given as a guide and should not be relied upon.

BUTLER & STAG

