



22a Forest Drive, Theydon Bois
Epping

Guide Price £395,000



22a Forest Drive

Theydon Bois, Epping

Situated in the heart of the picturesque village of Theydon Bois, this delightful first-floor flat on Forest Drive offers the perfect blend of comfort, convenience, and village charm.

- Separate Kitchen
- First Floor Apartment
- Close To Theydon Bois Central Line Station
- Two Bedrooms/ Two Bathrooms
- Available Now
- Communal Parking For Residents





Boasting two well-proportioned bedrooms, this home is ideal for individuals, couples, or downsizers seeking a peaceful retreat while remaining within easy reach of local amenities and transport links.

The flat features a bright and spacious reception room, providing an inviting space for both relaxation and entertaining. The master bedroom benefits from fitted wardrobes and a private en-suite shower room, while the main bathroom has been thoughtfully designed for both style and practicality. A key highlight of this property is the allocated parking space – a rare and highly sought-after advantage in such a desirable location.

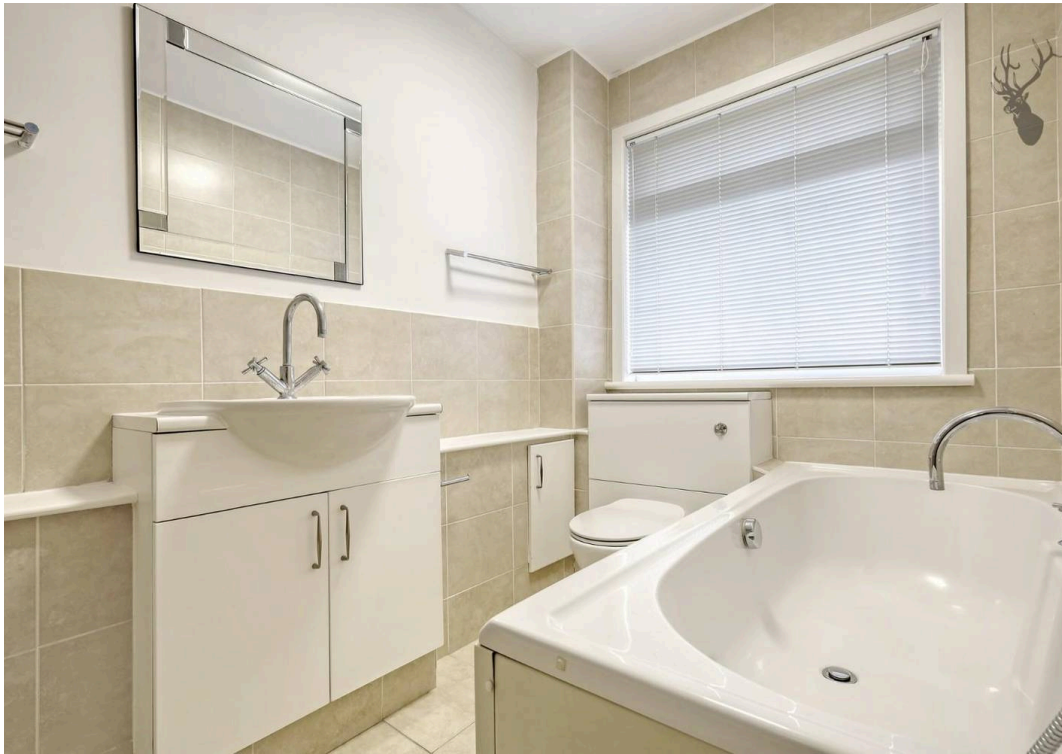
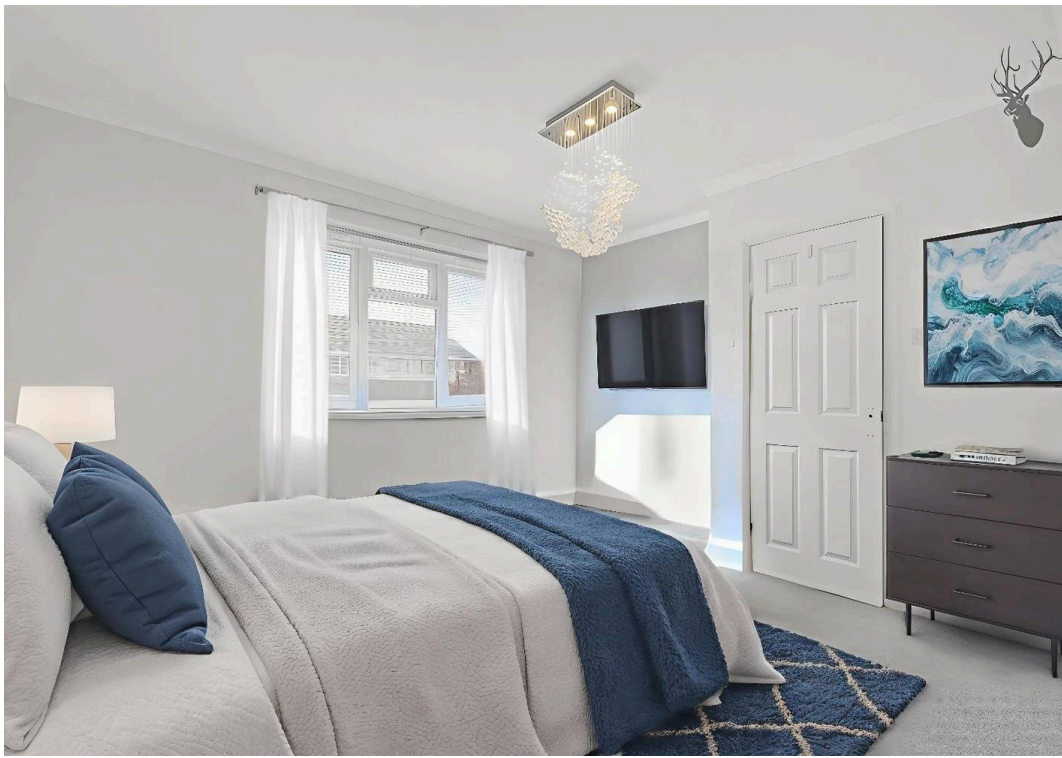
Perfectly positioned just a short stroll from Theydon Bois Underground Station, residents can enjoy excellent connections to London and surrounding areas, making commuting effortless. The nearby village shops, cafés, and restaurants cater to all your daily needs, adding to the appeal of this charming home.

Offered with no onward chain, this flat presents an exceptional opportunity for first-time buyers or those looking to downsize and settle into a welcoming community.

Theydon Bois itself is a highly regarded village, centered around a scenic village green complete with duck pond. Forest Drive is a popular residential street, placing you within easy reach of local amenities, a selection of traditional pubs, and well-reviewed restaurants. For families, Theydon Bois Primary School is nearby, while Davenant and Epping St Johns Comprehensive School is just a short drive away. Access to London is seamless via the Central Line tube station and the M25 (Junction 26 at Waltham Abbey).

Council Tax band: C



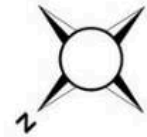




Forest Drive

Approx. Gross Internal Area 62.4 Sq M (671.6 Sq Ft)

BUTLER & STAG



Second Floor

Approx. 62.4 sq. metres (671.6 sq. feet)



Measurements are approximate and for illustration purposes only. While we do not doubt the accuracy and completeness, we advise you conduct a careful independent assessment of the property to determine monetary value.

© @modephoto.uk www.modephoto.co.uk

FROM EAST LONDON ENERGY TO WEST ESSEX EASE

We Make Moving Home Easy.

At Butler and Stag, we do more than just connect London to West Essex – we make the move seamless. With offices spanning from vibrant East London to the tranquillity of West Essex, we understand the nuances of each area and the journey people take between them. Our marketing goes beyond standard listings, showcasing every property with precision, creativity, and reach that others simply can't match. Coupled with an unparalleled attention to detail, from first enquiry to final move-in, we ensure every client and customer feels informed, supported, and confident. Simply put, we do the little things that make a big difference, setting us apart in every step of the property experience.



LONDON STRATFORD SOUTH WOODFORD BUCKHURST HILL LOUGHTON EPPING BEYOND

Like what you see? Let's talk

Book your **FREE** valuation now



01992 667666

theydon@butlerandstag.com

4 Forest Drive, Theydon Bois, CM16 7EY

[butlerandstag.uk](https://www.butlerandstag.uk)

IMPORTANT NOTICE - These particulars have been prepared in good faith and they are not intended to constitute part of an offer or contract. We have not performed a structural survey on this property and the services, appliances and specific fittings have not been tested. All photographs, measurements, floor plans and distances referred to are given as a guide and should not be relied upon.

BUTLER & STAG

