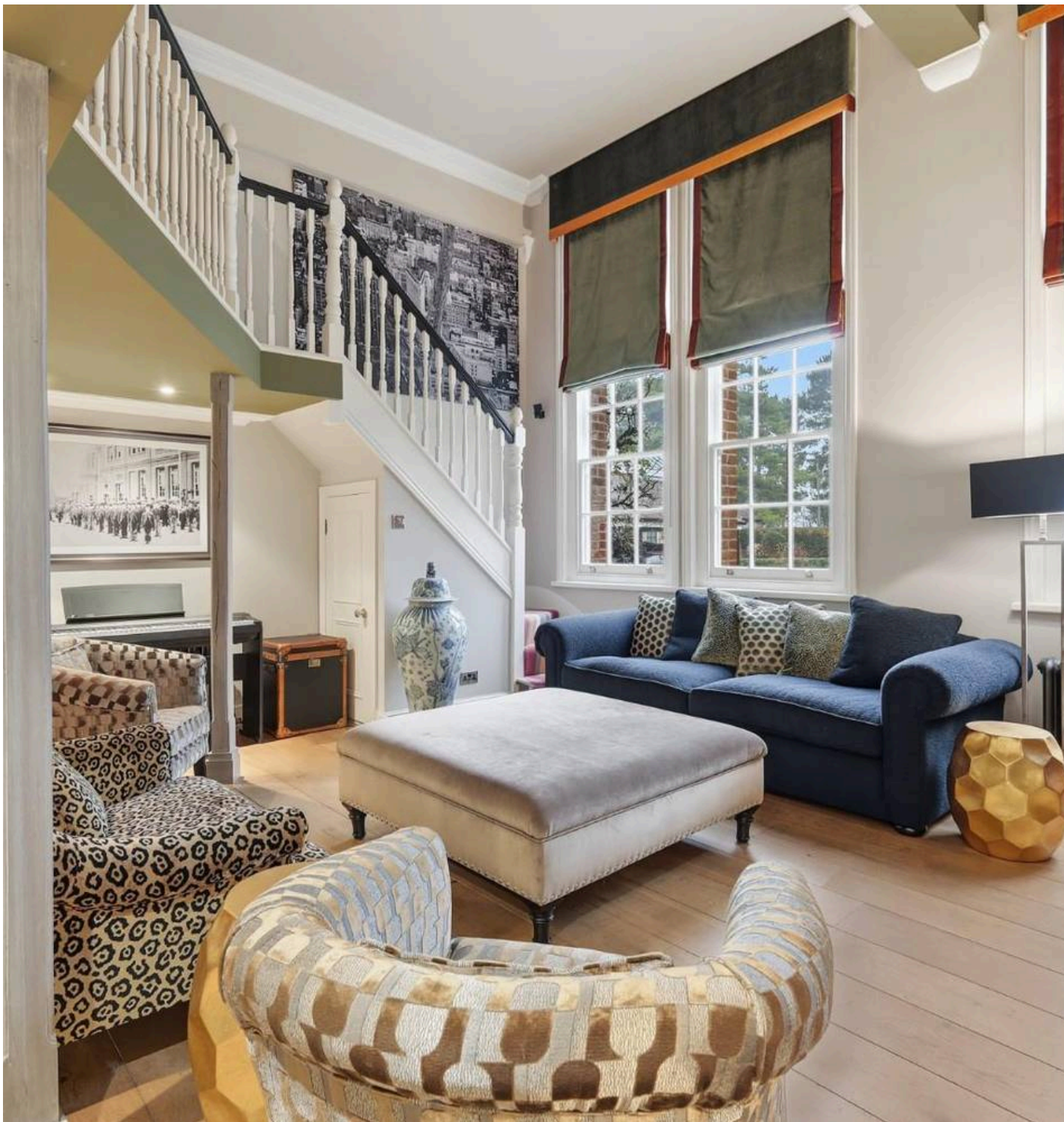




3 Elmbridge Hall, Fyfield
Ongar

Guide Price £650,000



3 Elbridge Hall

Fyfield, Ongar

A unique, elegant and stylish apartment covering the front façade of this impressive former Victorian school property nestled within the gated Elbridge Hall estate - with fantastic views overlooking the River Roding valley. An opportunity to acquire the premier apartment and former showhouse.

- Victorian Apartment
- Principle Bedroom With En-Suite
- Two Vehicle Carport
- Secured Gated Access
- Stunning Throughout
- Views Of The Essex Countryside





This beautifully presented home offers approximately 1,265 sq. ft of internal space arranged across the ground floor and a versatile mezzanine and including impressive 4 metre high ceilings and grandeur throughout.

Entering via the tiled hallway with a video intercom system offering security and a warm welcome.

The kitchen and breakfast room sits just off the main living area, affording a well-planned layout with plenty of storage and room for dining and equipped with modern conveniences - dishwasher, washer/dryer, hob, oven, fridge, freezer, and water softener.

The ground floor opens into a generous lounge measuring 5.83m x 5.50m; a bright and inviting space ideal for relaxing or entertaining with impressive floor to ceiling windows.

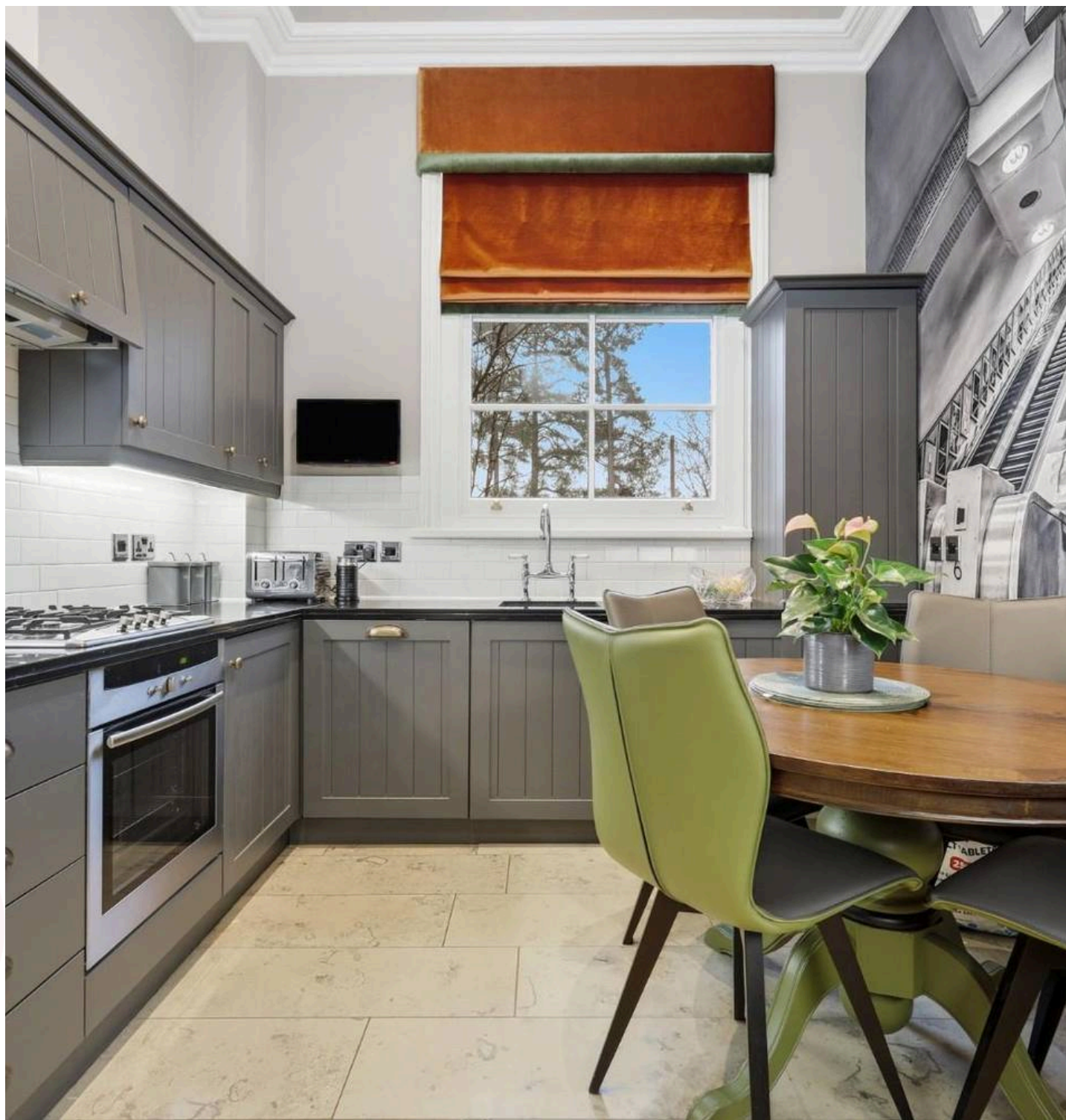
The mezzanine offers a snug reading nook, a study, and dressing/ storage room.

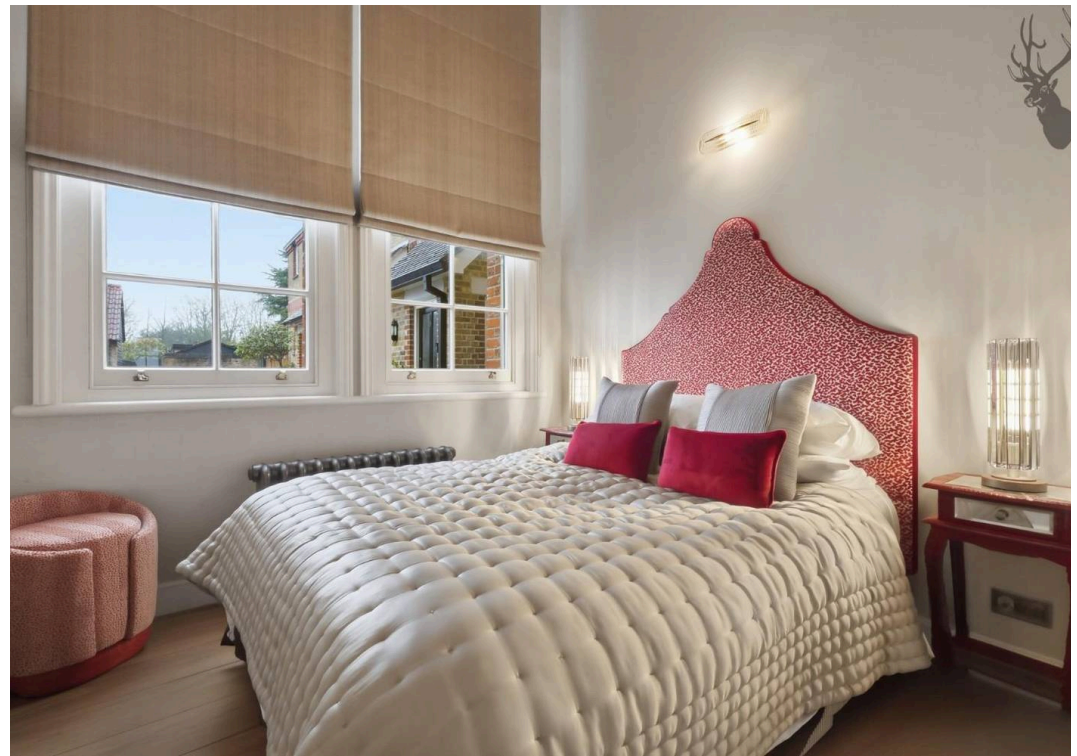
Two double bedrooms are situated on the ground floor and are adorned with ceiling-high windows. The principle bedroom benefits from a stylish en-suite wetroom, wc and hand-basin. Bedroom 2 includes stairs to a mezzanine dressing room above.

The separate family bathroom serves the second bedroom and guests. The design of the home allows natural light to flow throughout, highlighting the property's charming blend of character and contemporary comfort.

Parking includes a two-vehicle carport and visitor bays. Communal gardens with the estate backing onto farmland.

Set within the peaceful surroundings of Fyfield yet conveniently located for access to Ongar, Epping and Chelmsford and key transport routes, Elmsbridge



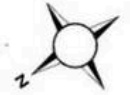




Elmbridge Hall

Approx. Gross Internal Area 117.6 Sq M (1265.4 Sq Ft)

BUTLER & STAG



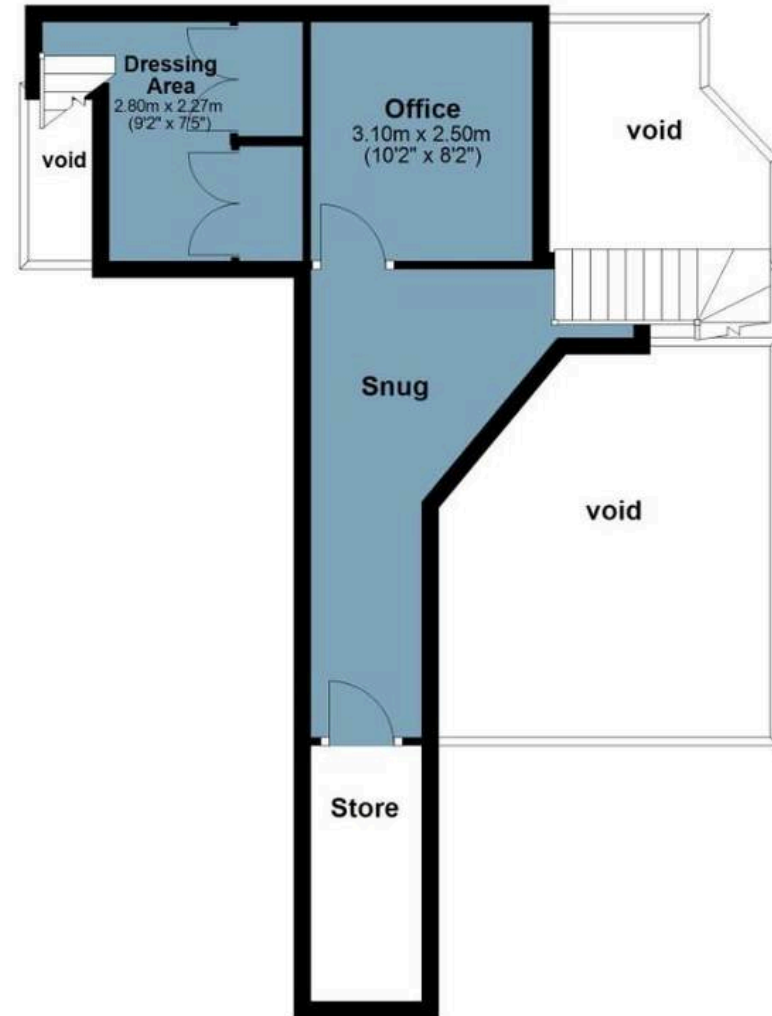
Ground Floor

Approx. 85.9 sq. metres (924.8 sq. feet)



Mezzanine

Approx. 31.6 sq. metres (340.6 sq. feet)



Measurements are approximate and for illustration purposes only. While we do not doubt the accuracy and completeness, we advise you conduct a careful independent assessment of the property to determine monetary value.

FROM EAST LONDON ENERGY TO WEST ESSEX EASE

We Make Moving Home Easy.

At Butler and Stag, we do more than just connect London to West Essex – we make the move seamless. With offices spanning from vibrant East London to the tranquillity of West Essex, we understand the nuances of each area and the journey people take between them. Our marketing goes beyond standard listings, showcasing every property with precision, creativity, and reach that others simply can't match. Coupled with an unparalleled attention to detail, from first enquiry to final move-in, we ensure every client and customer feels informed, supported, and confident. Simply put, we do the little things that make a big difference, setting us apart in every step of the property experience.



LONDON STRATFORD SOUTH WOODFORD BUCKHURST HILL LOUGHTON EPPING BEYOND

Like what you see? Let's talk

Book your **FREE** valuation now



01992 667666

theydon@butlerandstag.com

4 Forest Drive, Theydon Bois, CM16 7EY

[butlerandstag.uk](https://www.butlerandstag.uk)

IMPORTANT NOTICE - These particulars have been prepared in good faith and they are not intended to constitute part of an offer or contract. We have not performed a structural survey on this property and the services, appliances and specific fittings have not been tested. All photographs, measurements, floor plans and distances referred to are given as a guide and should not be relied upon.

BUTLER & STAG

