



Woodcutters Tysea Hill, Stapleford Abbots
Romford

Guide Price £900,000



Woodcutters Tysea Hill

Stapleford Abbots, Romford

Guide Price £900,000-£1,000,000. An impressive and versatile five-bedroom detached family home offering approximately 2,335 Sq.ft of well-planned accommodation, ideally suited to modern family living.

- Off-Street Parking For Two Vehicles
- Double Integral Garage
- Village Location
- Five Bedrooms/Three Bathrooms
- Stunning Detached Family Home
- Spacious Kitchen/Dining Area
- Study/Play Room/Utility Room
- 2335 Sq. ft Of Accommodation Space



The property is entered via a welcoming entrance hall which provides access to a generous living room, perfect for entertaining or relaxing, and a separate study, ideal for home working. The heart of the home is the spacious kitchen/diner, offering ample room for family dining and direct access to the rear garden, creating a seamless indoor-outdoor living experience. Additional ground floor accommodation includes a playroom, utility room, WC, and internal access to the integral garage, enhancing everyday practicality.

To the first floor, a central landing leads to five well-proportioned bedrooms. The principal bedroom benefits from a private en-suite, while a second bedroom also enjoys its own en-suite facilities. The remaining bedrooms are served by a modern family bathroom, making the layout ideal for larger families or guests.

Externally, the property enjoys a generous rear garden, offering excellent space for outdoor entertaining and family activities. The integral garage and driveway provide ample parking and storage.

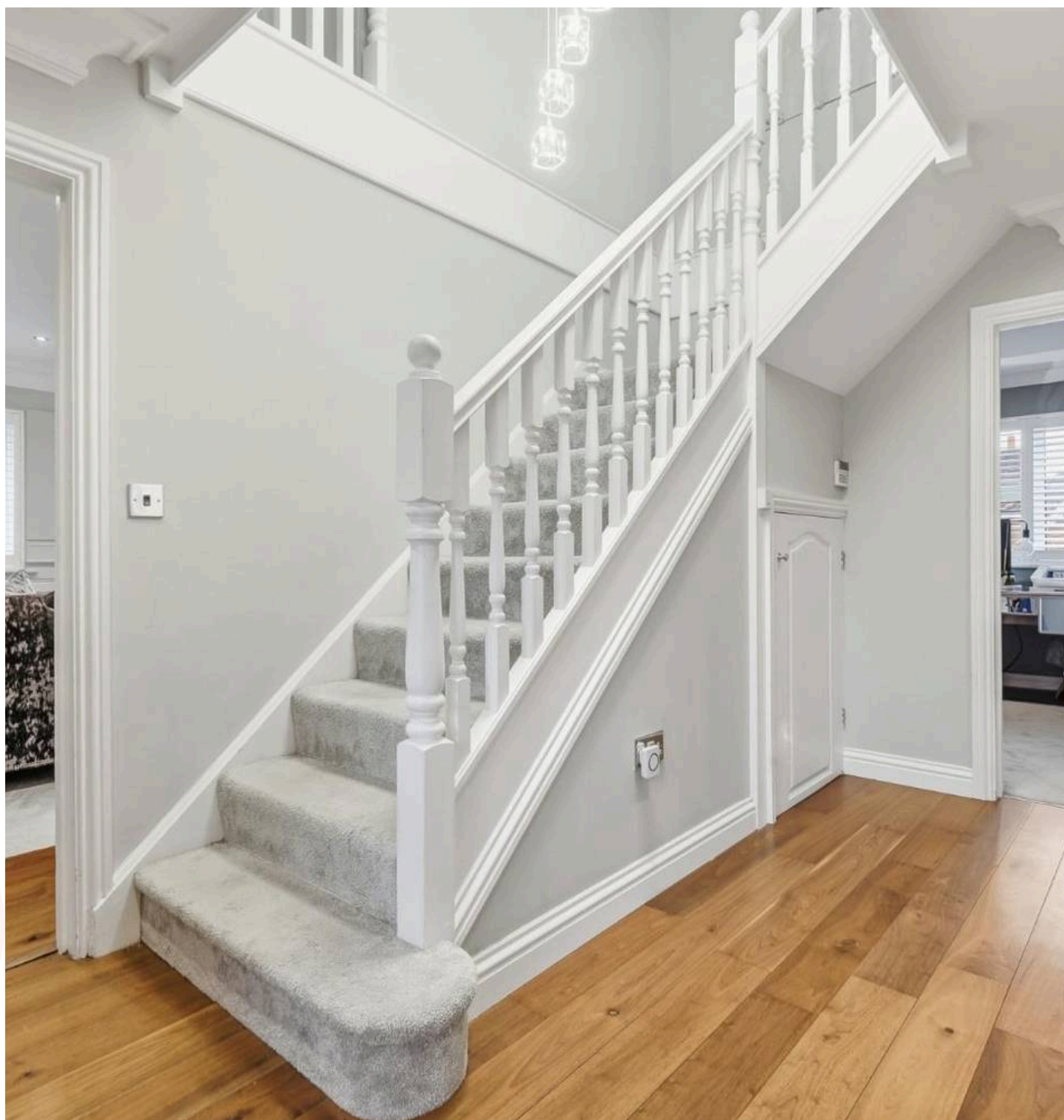
This substantial home combines flexible living space with modern family requirements and must be viewed to fully appreciate the size, layout, and potential on offer.

Council Tax band: G

Tenure: Freehold

EPC Energy Efficiency Rating: C

EPC Environmental Impact Rating: C







Tysea Hill

Approx. Gross Internal Area 217 sq. metres (2335.3 sq. feet)



Measurements are approximate and for illustration purposes only. While we do not doubt the accuracy and completeness, we advise you conduct a careful independent assessment of the property to determine monetary value

FROM EAST LONDON ENERGY TO WEST ESSEX EASE

We Make Moving Home Easy.

At Butler and Stag, we do more than just connect London to West Essex – we make the move seamless. With offices spanning from vibrant East London to the tranquillity of West Essex, we understand the nuances of each area and the journey people take between them. Our marketing goes beyond standard listings, showcasing every property with precision, creativity, and reach that others simply can't match. Coupled with an unparalleled attention to detail, from first enquiry to final move-in, we ensure every client and customer feels informed, supported, and confident. Simply put, we do the little things that make a big difference, setting us apart in every step of the property experience.



LONDON STRATFORD SOUTH WOODFORD BUCKHURST HILL LOUGHTON EPPING BEYOND

Like what you see? Let's talk

Book your **FREE** valuation now



01992 667666

theydon@butlerandstag.com

4 Forest Drive, Theydon Bois, CM16 7EY

[butlerandstag.uk](https://www.butlerandstag.uk)

IMPORTANT NOTICE - These particulars have been prepared in good faith and they are not intended to constitute part of an offer or contract. We have not performed a structural survey on this property and the services, appliances and specific fittings have not been tested. All photographs, measurements, floor plans and distances referred to are given as a guide and should not be relied upon.

BUTLER & STAG

