



Foxwood Coppice Row, Theydon Bois
Epping

£1,100,000



Foxwood Coppice Row

Theydon Bois, Epping

Set within the highly sought-after village of Theydon Bois, this attractive four-bedroom home offers a wonderful blend of comfort, space and future potential. With a sunny, south-facing garden and scope to personalise, it presents an ideal long-term family home.

- South Facing Garden Approx 103'
- CHAIN FREE
- Four Bedrooms/Three Bathrooms
- Semi Detached Family Home
- Garage
- Off Street Parking
- Spacious Living/Dining Area





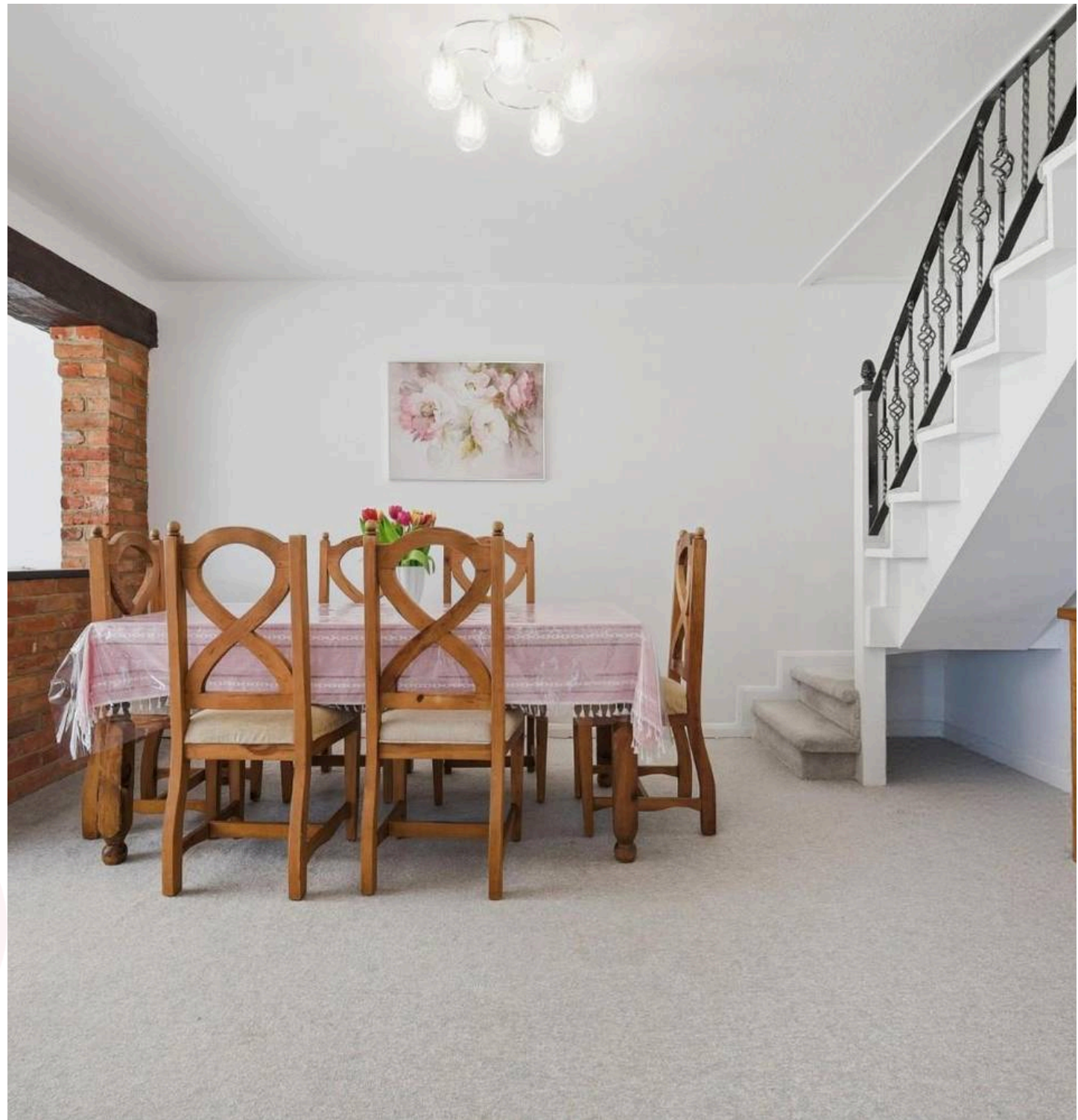
Some properties immediately feel welcoming, and Foxwood is certainly one of them. From the outset, the home offers strong kerb appeal, complete with a garage and generous driveway. Inside, the property is well-presented throughout, with a neutral décor and spacious layout ready for immediate occupation while still offering exciting potential to enhance over time.

The ground floor provides a versatile arrangement of living space, including a front reception room currently used as a playroom, alongside an open-plan living and dining area overlooking the garden. The kitchen is well-positioned with useful side access, complemented by a convenient ground floor WC and excellent storage throughout. Notably, the kitchen and WC have been recently updated, offering a fresh and modern feel.

Upstairs, there are four well-proportioned double bedrooms. The principal bedroom benefits from its own en-suite shower room and enjoys a pleasant outlook towards the nearby deer sanctuary. A separate family bathroom serves the remaining bedrooms, ideal for busy households.

Externally, the south-facing rear garden is a real highlight, filled with mature greenery and offering a private and peaceful setting. There is ample space for children, pets, or potential additions such as a garden room or outdoor entertaining area.

Situated on the edge of Epping Forest, Theydon Bois is a highly desirable location known for its village setting and excellent connectivity. The Underground station is within easy reach, providing direct access into London, while a selection of local shops, restaurants and traditional pubs are all close by. The surrounding forest offers beautiful walking routes, making this a truly special place to call home.

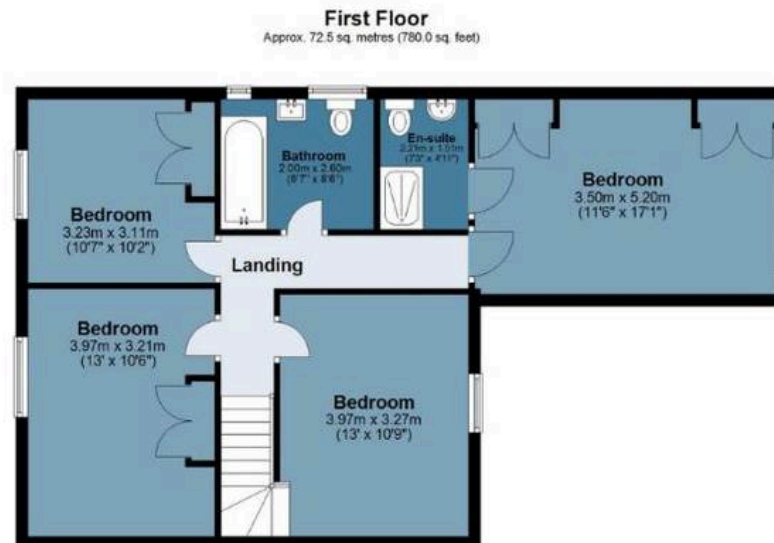






Foxwood

Approx. Gross Internal Area 178.4 sq. metres 1920.5 sq. feet)



Measurements are approximate and for illustration purposes only. While we do not doubt the accuracy and completeness, we advise you conduct a careful independent assessment of the property to determine monetary value

FROM EAST LONDON ENERGY TO WEST ESSEX EASE

We Make Moving Home Easy.

At Butler and Stag, we do more than just connect London to West Essex – we make the move seamless. With offices spanning from vibrant East London to the tranquillity of West Essex, we understand the nuances of each area and the journey people take between them. Our marketing goes beyond standard listings, showcasing every property with precision, creativity, and reach that others simply can't match. Coupled with an unparalleled attention to detail, from first enquiry to final move-in, we ensure every client and customer feels informed, supported, and confident. Simply put, we do the little things that make a big difference, setting us apart in every step of the property experience.



LONDON STRATFORD SOUTH WOODFORD BUCKHURST HILL LOUGHTON EPPING BEYOND

Like what you see? Let's talk

Book your **FREE** valuation now



01992 667666

theydon@butlerandstag.com

4 Forest Drive, Theydon Bois, CM16 7EY

[butlerandstag.uk](https://www.butlerandstag.uk)

IMPORTANT NOTICE - These particulars have been prepared in good faith and they are not intended to constitute part of an offer or contract. We have not performed a structural survey on this property and the services, appliances and specific fittings have not been tested. All photographs, measurements, floor plans and distances referred to are given as a guide and should not be relied upon.

BUTLER & STAG

