



Thompson Close, Woodford, SK7 1TD

£525,000

Stylish three bedroom modern semi detached home in private cul-de-sac with open-plan kitchen diner, spacious living room, stylish ensuite to the master bedroom, solar panels for maximum energy efficiency, double driveway, private enclosed south-facing garden, and fantastic uninterrupted views to the front. Walking to school and transport links as well as the communal parks within the development is easy and certainly reaffirms why this development is so popular.

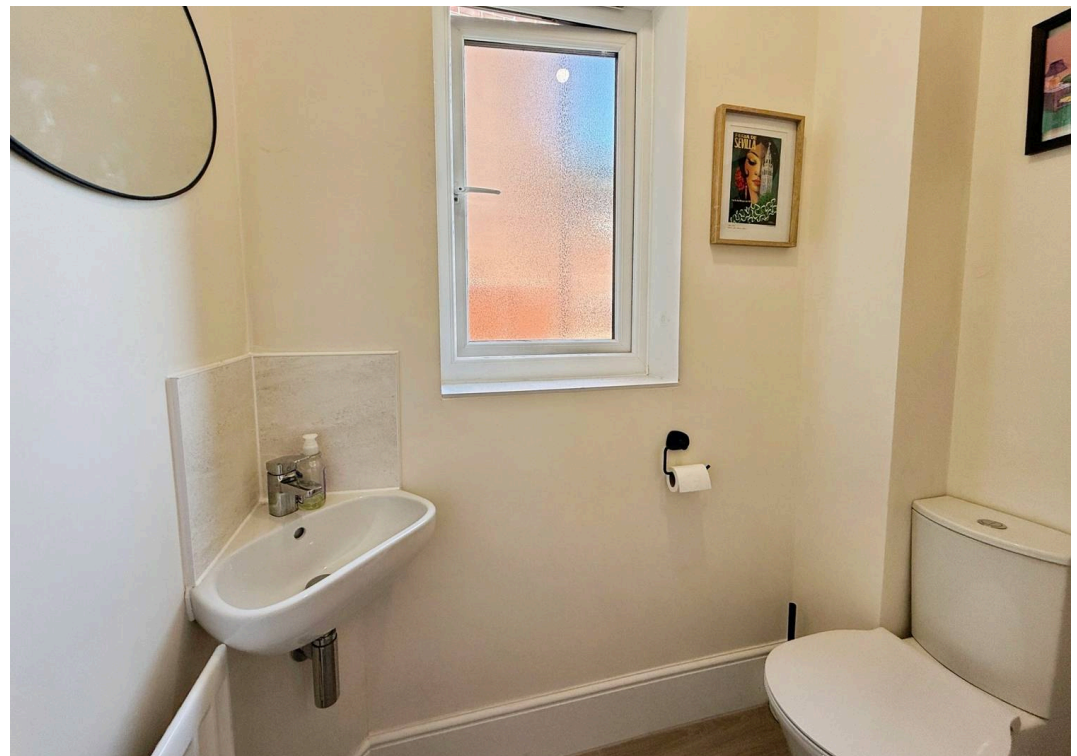
Council Tax Band: D

EPC Rating: A

Tenure: Freehold

- Double Driveway Providing Off-Road Parking, Positioned In A Private Cul-De-Sac
- Modern Open Plan Kitchen Diner With Integrated Appliances
- Spacious & Privately Enclosed South Facing Garden With Multiple Seating Areas
- Modern Family Bathroom With Sleek Fixtures
- Spectacular Uninterrupted Views To The Front
- Bespoke Built-in Wardrobes To The Master Bedroom
- Solar Panels Providing Excellent Energy Efficiency
- Within Easy Walking Distance of Woodford Primary School Along With Easy Access To Transport Links Such As The Manchester Airport Link Road





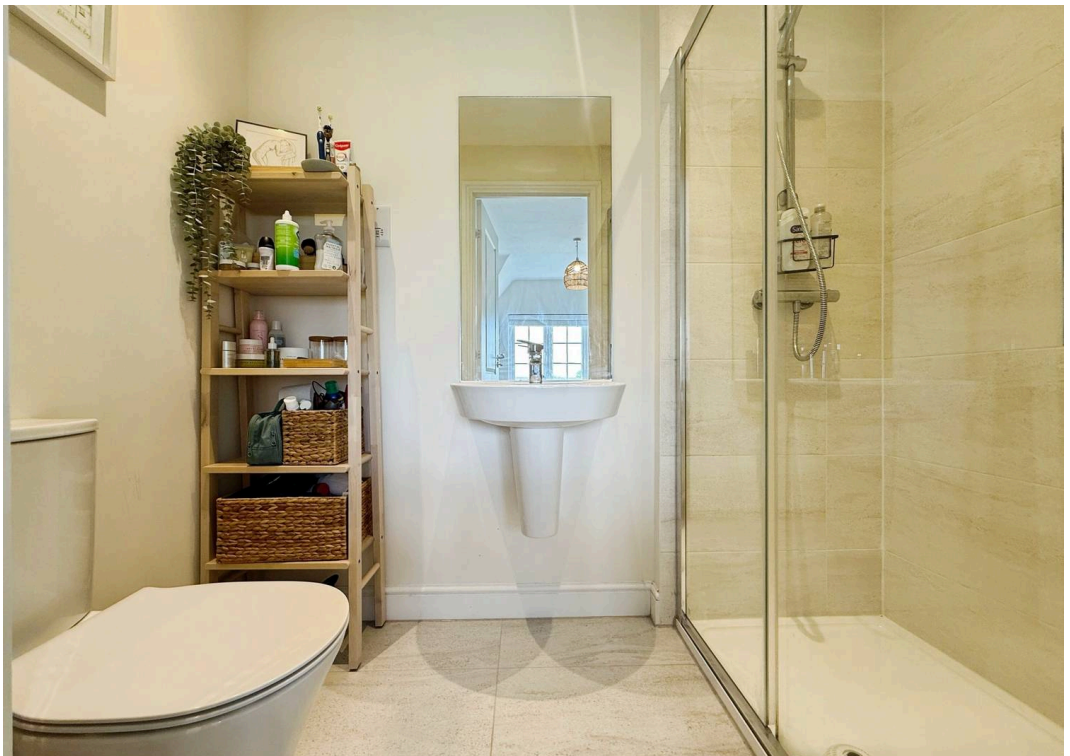


Presenting this beautifully appointed three bedroom semi-detached modern Redrow home, set within a highly sought-after private cul-de-sac, offering a superb blend of contemporary style, comfort and practicality. Upon entering, you are welcomed by a bright entrance hallway leading into a thoughtfully designed living space, with a modern open plan kitchen diner forms the heart of the home. This area features various high spec integrated appliances, sleek cabinetry and generous worktop space, making it ideal for both every-day family meals and entertaining guests. The kitchen diner displays a sociable environment filled with natural light and double doors lead onto the south facing rear garden. Completing the ground floor is a useful WC positioned off the hallway. Upstairs, three well-proportioned bedrooms provide ample accommodation for families or professionals, with the master bedroom further enhanced by bespoke built-in wardrobes that offer excellent storage solutions while maintaining a streamlined aesthetic. An ensuite provides a touch of luxury as well as convenience to this master suite. The modern family bathroom is fitted with contemporary fixtures and finishes, including a full-size bath with shower over, a stylish vanity unit and heated towel rail, all designed to deliver both functionality and a touch of luxury. A particular highlight of this property is the spectacular uninterrupted views to the front, providing a sense of openness and tranquillity rarely found in such a convenient location. The home's energy efficiency is further boosted by the addition of solar panels, helping to reduce utility costs and environmental impact. Practicality is catered for with a double driveway providing off-road parking



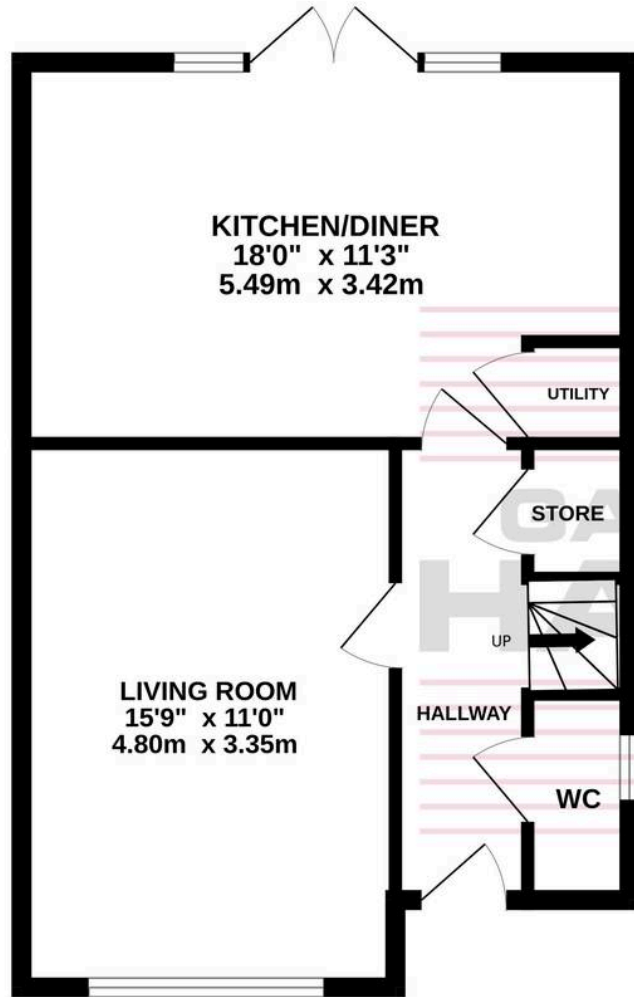
for multiple vehicles, ensuring convenience for residents and visitors alike. The property's position within a private cul-de-sac guarantees a peaceful setting with minimal passing traffic, making it particularly appealing for families with young children or those seeking a quieter lifestyle. For added peace of mind and comfort, the house is fitted with double glazing and gas central heating throughout. The location is ideal for families, being within easy walking distance of Woodford Primary School, and offers excellent access to transport links, including the Manchester Airport Link Road, making commuting and travel both straightforward and efficient. Local amenities, shops and leisure facilities are all within easy reach, further enhancing the property's appeal. With its combination of stylish interiors, energy efficiency, practical features and a prime position in a desirable residential area, this exceptional home represents a rare opportunity to acquire a property that truly caters for modern living. The south facing rear garden with its side access and multiple patio areas will delight buyers during those summer months but equally the external spaces can be enjoyed all year round. Early viewing is highly recommended to fully appreciate the quality and lifestyle on offer.



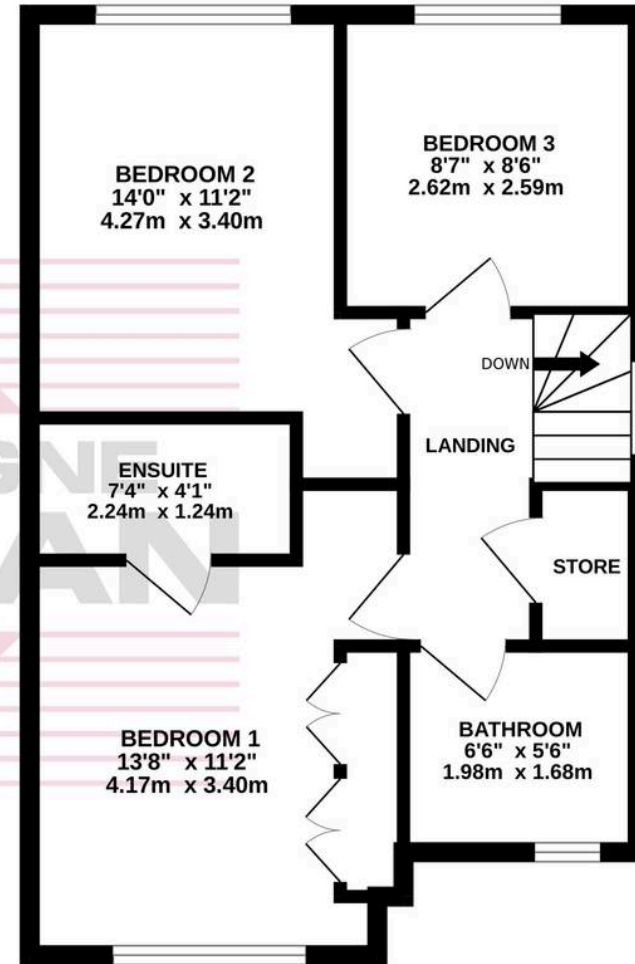




GROUND FLOOR
469 sq.ft. (43.6 sq.m.) approx.



1ST FLOOR
473 sq.ft. (44.0 sq.m.) approx.



TOTAL FLOOR AREA : 943 sq.ft. (87.6 sq.m.) approx.
Measurements are approximate. Not to scale. Illustrative purposes only
Made with Metropix ©2026



Gascoigne Halman

Gascoigne Halman, 9 Ack Lane East - SK7 2BE

0161 439 5555

bramhall@gascoignehalman.co.uk

www.gascoignehalman.co.uk/