



Longridge

Knutsford

£250,000

**GASCOIGNE
HALMAN**

THE AREA'S LEADING ESTATE AGENCY



Longridge

Knutsford

Ideal for first-time buyers, couples, and investors alike, this deceptively spacious and well-maintained three-bedroom end-terrace home occupies an enviable corner plot position, benefitting from a generous front garden and driveway parking.

Lovingly cared for by the current owner, the property offers excellent potential for purchasers to modernise and personalise to their own taste. The accommodation briefly comprises an entrance hall with a useful storage cupboard, a spacious dual-aspect living room filled with natural light, and a fitted kitchen. In addition, there is a versatile second reception room which is currently utilised at times as a fourth bedroom, complemented by an adjoining wet room, offering flexible living arrangements ideal for guests, multi-generational living, or home working.

To the first floor, the property features three well-proportioned bedrooms, including two comfortable doubles and a larger-than-average single bedroom, alongside the shower room and separate WC.

Externally, the property enjoys a rear garden, while the standout corner plot provides an impressive front garden and ample off-road parking, enhancing both practicality and kerb appeal.



Longridge

Knutsford

- NO CHAIN
- Deceptively spacious three-bedroom end-terrace home
- Corner plot
- Bright and spacious dual-aspect living room
- Versatile second reception room/occasional fourth bedroom with adjoining wet room
- Potential for purchasers to modernise

Council Tax band: B

Tenure: Freehold

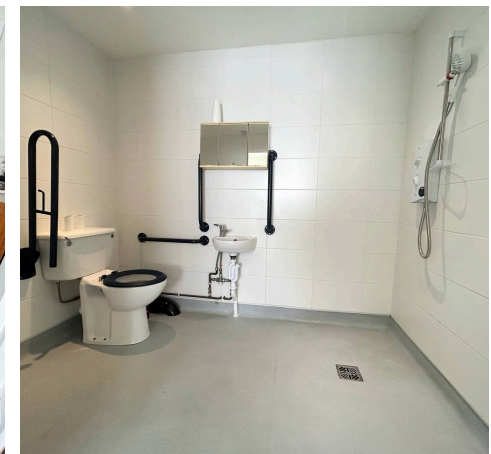
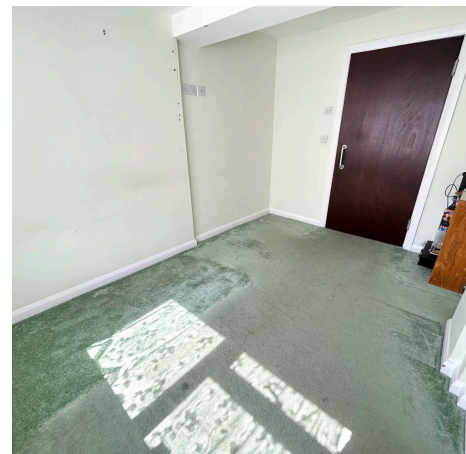
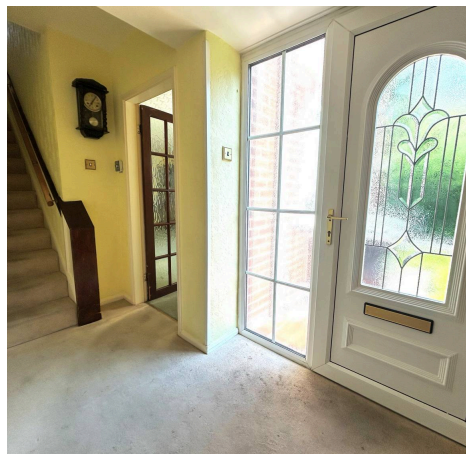
Services (Not Tested): All mains services are connected but have not been tested and you are advised to make your own enquiries and/or inspections.

Local Authority: Cheshire East Council

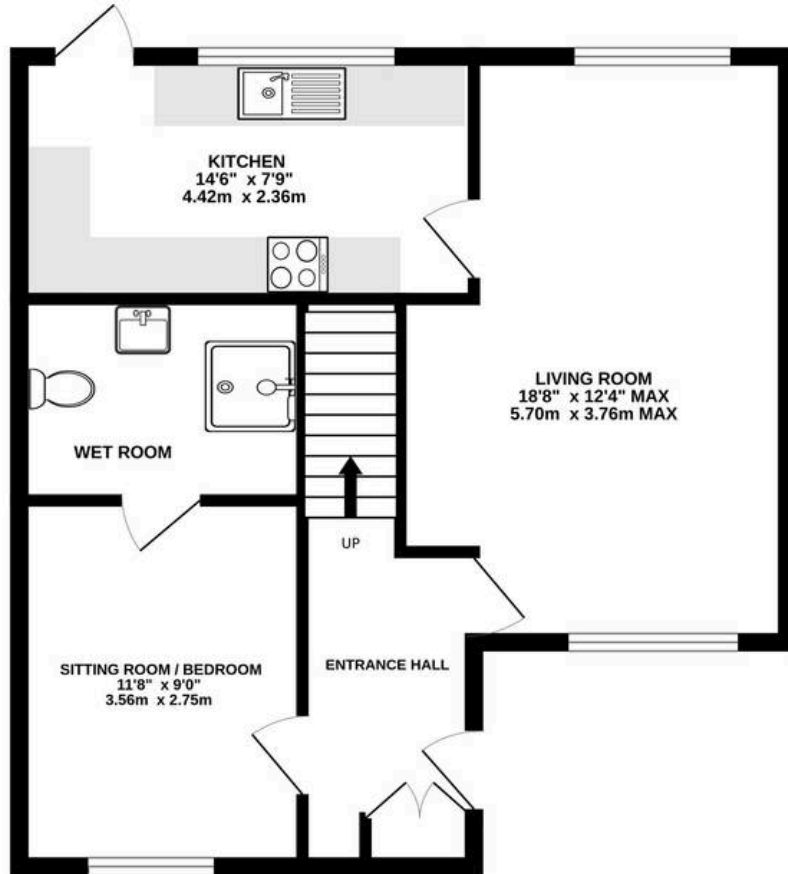
EPC Energy Efficiency Rating: TBC

Total Floor Area: 1020 sqft approx

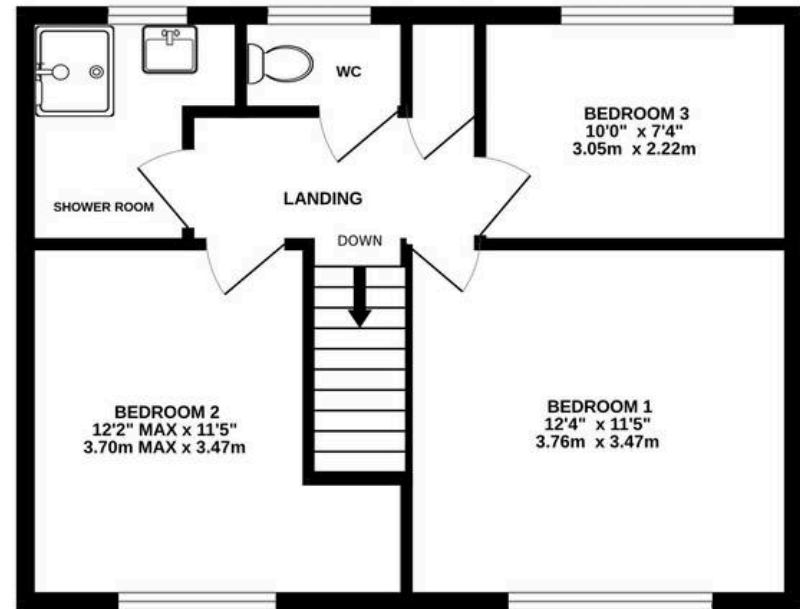
Viewings: Viewing strictly by appointment through the agents.



GROUND FLOOR
562 sq.ft. (52.2 sq.m.) approx.



1ST FLOOR
458 sq.ft. (42.5 sq.m.) approx.



TOTAL FLOOR AREA : 1020 sq.ft. (94.7 sq.m.) approx.
Measurements are approximate. Not to scale. Illustrative purposes only
Made with Metropix ©2026



THE AREA'S LEADING ESTATE AGENCY