

BUTLER & STAG



66 Plowman Close, London
London

Fixed Price £225,000 | £1,300 pcm



66 Plowman Close

London

Set within a quiet residential cul-de-sac, this well-presented one-bedroom ground floor apartment offers a smart and efficient layout.

- One Bedroom Flat
- Ground Floor
- Good Location
- Purpose Built
- Charming
- Newly Redecorated





With a gross internal area of approximately 29.6 sq m (319.1 sq ft), the property comprises a welcoming hallway with built-in storage, a bright and spacious open-plan lounge/diner, and a modern fitted kitchen tucked conveniently to the side.

The double bedroom offers comfortable living space with enough room for wardrobes and additional furnishings, while the contemporary bathroom is cleanly styled and practically laid out.

The flat benefits from good natural light throughout and enjoys its own private entrance. Its location places you within easy reach of local amenities, green spaces, and excellent transport links into Central London and surrounding areas.

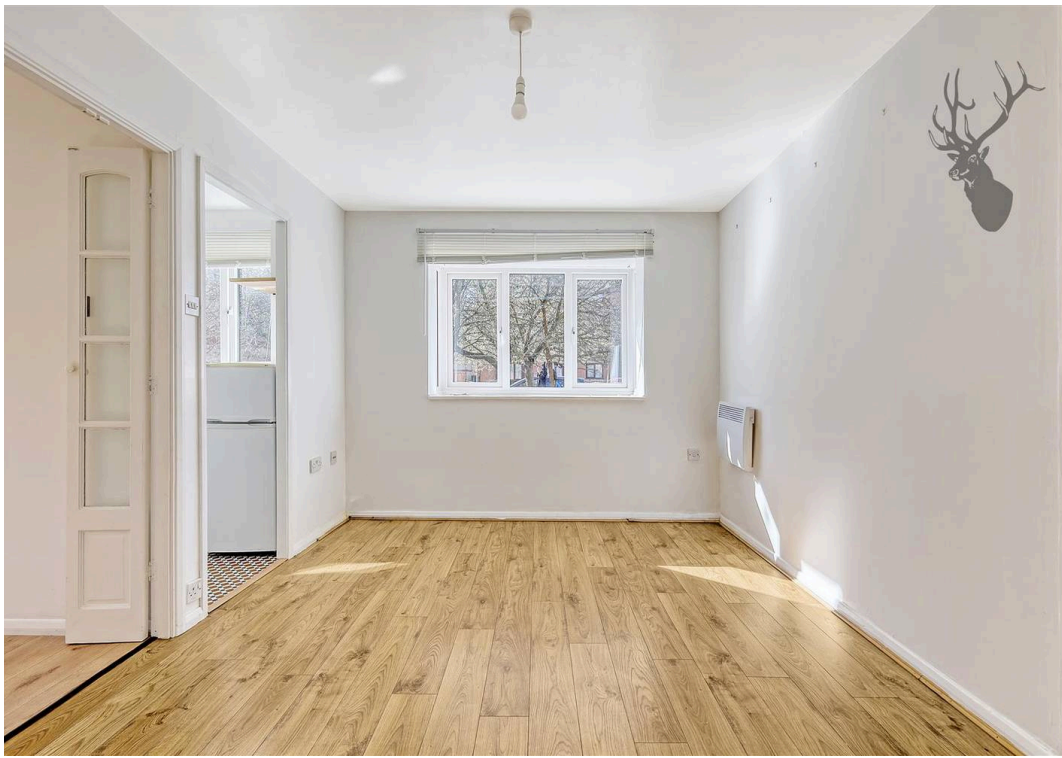
Council Tax band: D

Tenure: Leasehold

EPC Energy Efficiency Rating: D

EPC Environmental Impact Rating: D







Plowman Close

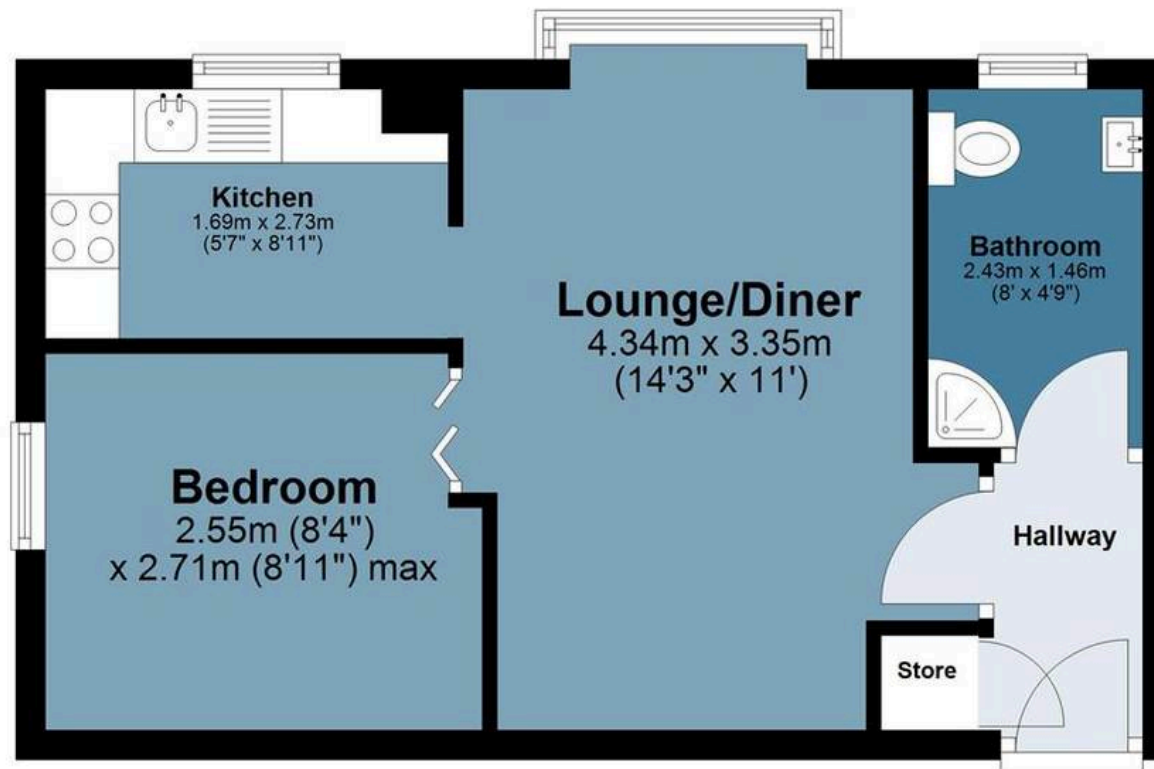
Approx. Gross Internal Area 29.6 Sq M (319.1 Sq Ft)

BUTLER & STAG



Ground Floor

Approx. 29.6 sq. metres (319.1 sq. feet)



Measurements are approximate and for illustration purposes only. While we do not doubt the accuracy and completeness, we advise you conduct a careful independent assessment of the property to determine monetary value.

© @modephotouk www.modephoto.co.uk

FROM EAST LONDON ENERGY TO WEST ESSEX EASE

We Make Moving Home Easy.

At Butler and Stag, we do more than just connect London to West Essex – we make the move seamless. With offices spanning from vibrant East London to the tranquillity of West Essex, we understand the nuances of each area and the journey people take between them. Our marketing goes beyond standard listings, showcasing every property with precision, creativity, and reach that others simply can't match. Coupled with an unparalleled attention to detail, from first enquiry to final move-in, we ensure every client and customer feels informed, supported, and confident. Simply put, we do the little things that make a big difference, setting us apart in every step of the property experience.



LONDON STRATFORD SOUTH WOODFORD BUCKHURST HILL LOUGHTON EPPING BEYOND

Like what you see? Let's talk

Book your **FREE** valuation now



01992 667666

theydon@butlerandstag.com

4 Forest Drive, Theydon Bois, CM16 7EY

[butlerandstag.uk](https://www.butlerandstag.uk)

IMPORTANT NOTICE - These particulars have been prepared in good faith and they are not intended to constitute part of an offer or contract. We have not performed a structural survey on this property and the services, appliances and specific fittings have not been tested. All photographs, measurements, floor plans and distances referred to are given as a guide and should not be relied upon.

BUTLER & STAG

