



Flat 5, 222-228 Maybank Road, London  
London

Guide Price £300,000

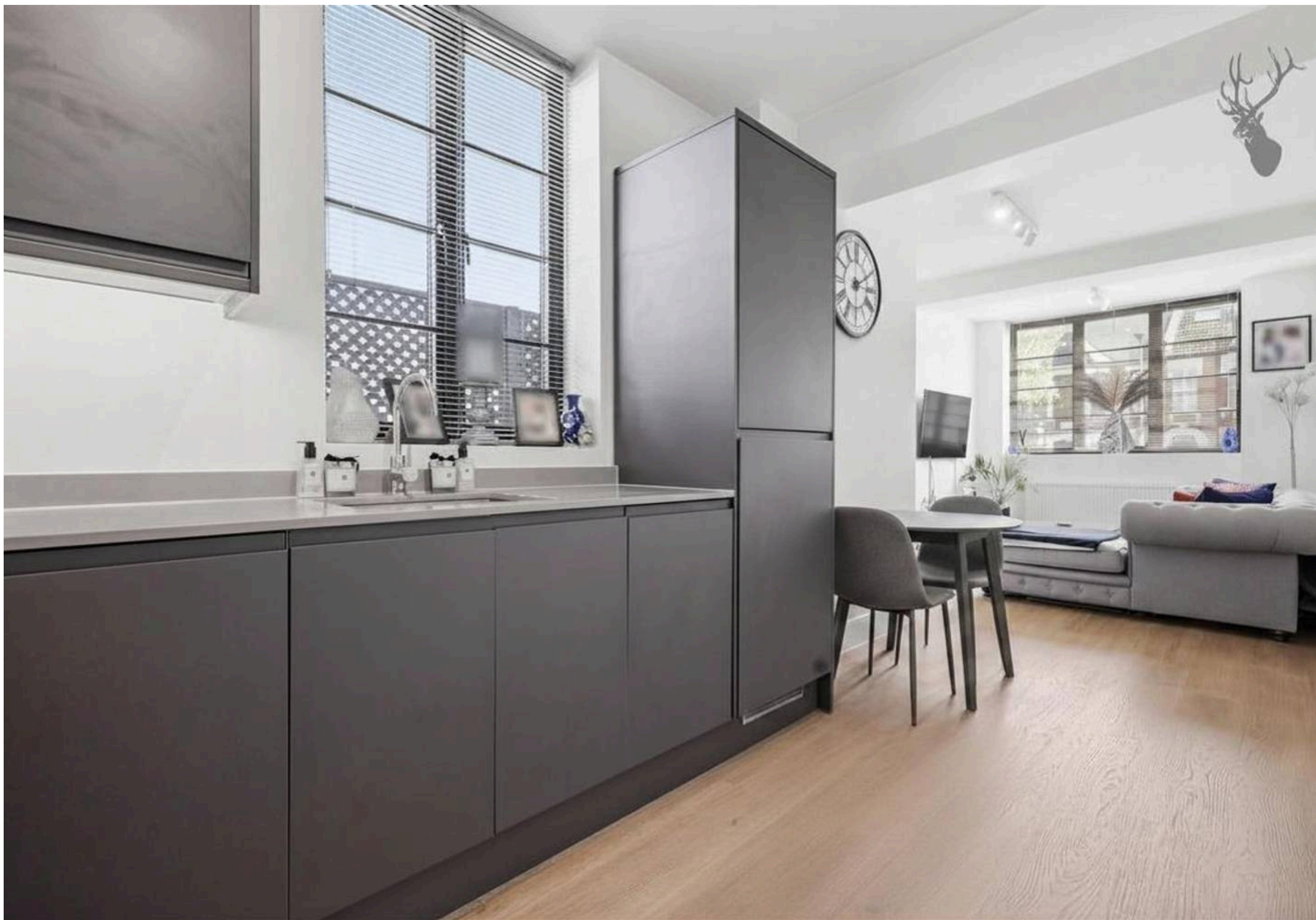


## Flat 5

222-228 Maybank Road, London

This beautifully presented ground floor apartment forms part of an attractive modern development in the well-connected and sought-after area of Woodford.

- 994 Years Remaining Lease
- Secure Intercom Entry System
- Private Outside Space
- Built In 2021
- 0.6 Miles From South Woodford Central Line Station
- Modern Fitted Kitchen With Integrated Appliances
- Stunning Ground Floor Apartment
- Open Plan Living
- Finished To Exacting Standards Throughout
- Easy Access To A406 & M11



Thoughtfully designed for contemporary living, the property features a bright and spacious open-plan living and dining area, seamlessly paired with a sleek, fully integrated kitchen—perfect for both everyday comfort and entertaining guests.

The generous double bedroom benefits from built-in wardrobes and offers direct access to a private terrace. A stylish, well-appointed bathroom completes the accommodation.

Finished to a high specification throughout, this impressive home effortlessly blends comfort, style, and practicality, making it an ideal choice for first-time buyers, professionals, or investors.

Ideally located, the property enjoys the best of Woodford's leafy surroundings alongside excellent local amenities. Central Line stations at Woodford and South Woodford provide fast and convenient access into Central London, while nearby bus routes and easy connections to the A406 and M11 make commuting by road equally straightforward.

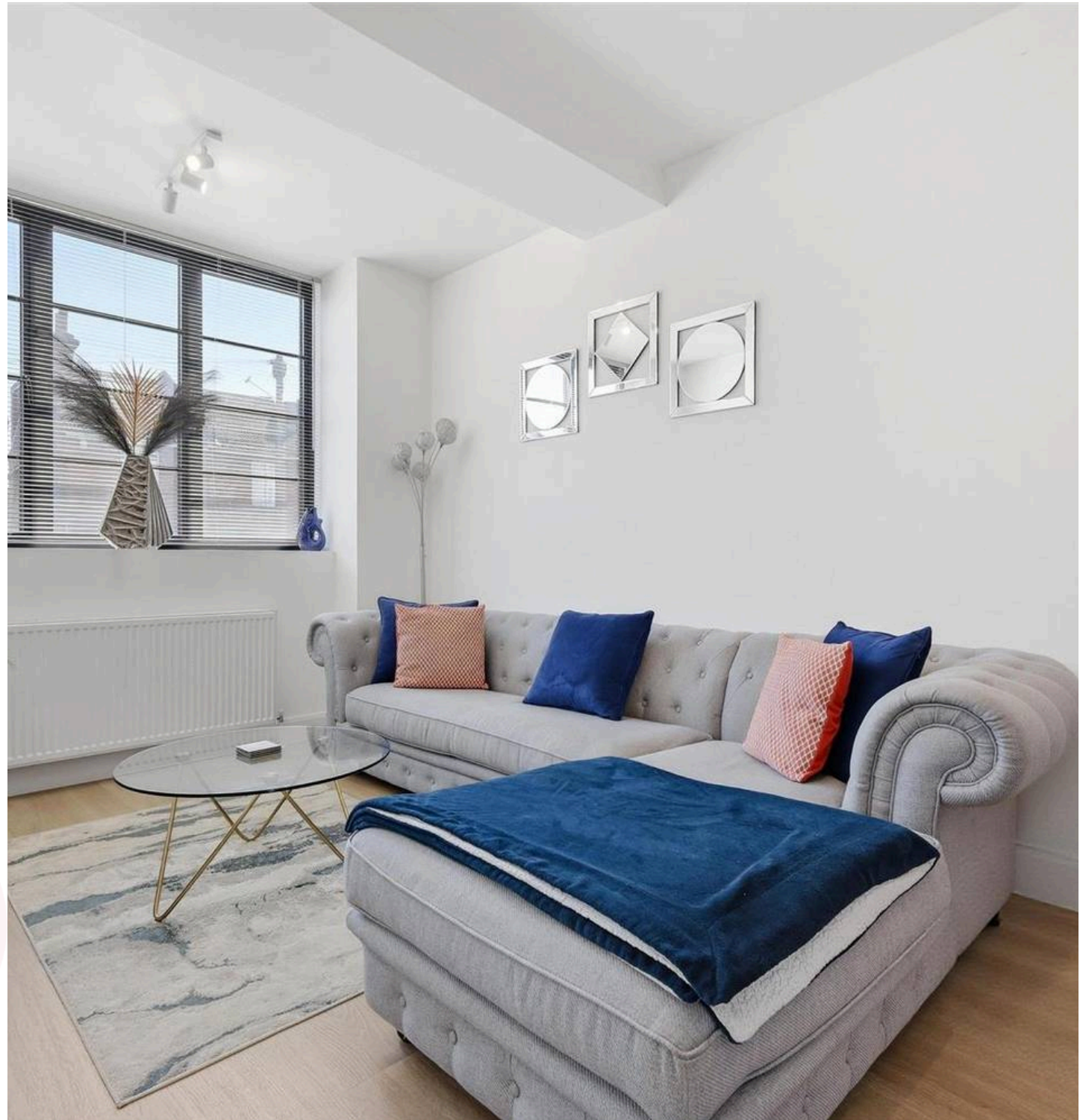
Residents can take advantage of the nearby green open spaces, including the expansive Epping Forest—perfect for walking, cycling, and outdoor leisure. A vibrant selection of cafés, restaurants, shops, and supermarkets along George Lane and the High Road further enhance the area's appeal, offering a perfect balance of convenience and relaxed community living.

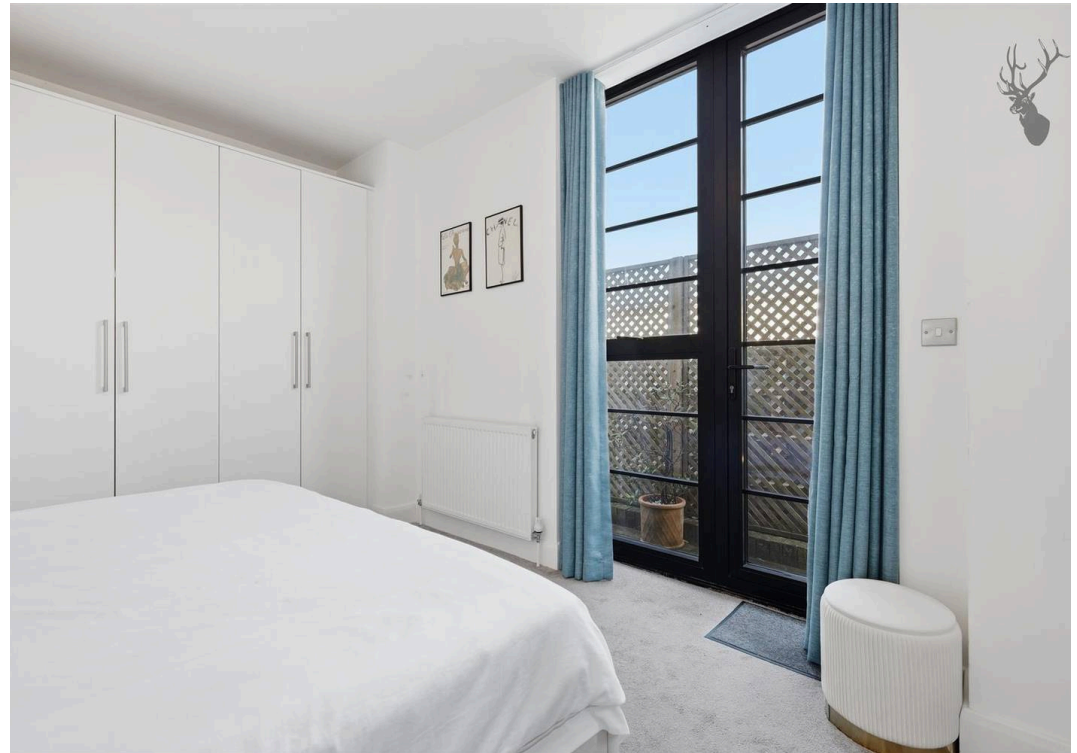
Council Tax band: C

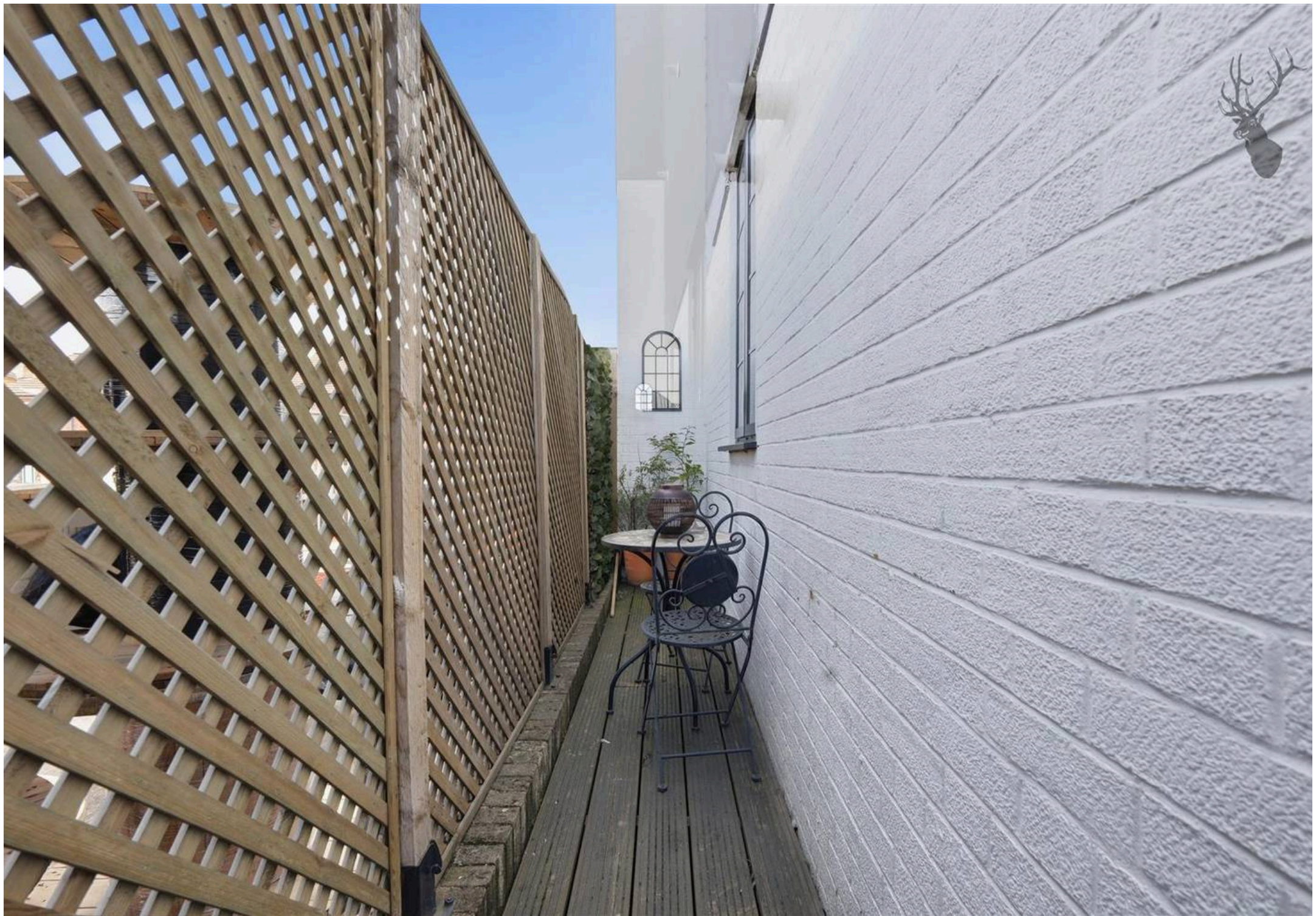
Tenure: Leasehold

EPC Energy Efficiency Rating: C

EPC Environmental Impact Rating: B







# Maybank Road

Approx. Gross Internal Area 39.3 sq. metres 422.5 sq. feet)



Measurements are approximate and for illustration purposes only. While we do not doubt the accuracy and completeness, we advise you conduct a careful independent assessment of the property to determine monetary value

# FROM EAST LONDON ENERGY TO WEST ESSEX EASE

## We Make Moving Home Easy.

At Butler and Stag, we do more than just connect London to West Essex – we make the move seamless. With offices spanning from vibrant East London to the tranquillity of West Essex, we understand the nuances of each area and the journey people take between them. Our marketing goes beyond standard listings, showcasing every property with precision, creativity, and reach that others simply can't match. Coupled with an unparalleled attention to detail, from first enquiry to final move-in, we ensure every client and customer feels informed, supported, and confident. Simply put, we do the little things that make a big difference, setting us apart in every step of the property experience.



LONDON   STRATFORD   SOUTH WOODFORD   BUCKHURST HILL   LOUGHTON   EPPING   BEYOND

# Like what you see? Let's talk

Book your **FREE** valuation now



01992 667666

theydon@butlerandstag.com

4 Forest Drive, Theydon Bois, CM16 7EY

[butlerandstag.uk](https://www.butlerandstag.uk)

IMPORTANT NOTICE - These particulars have been prepared in good faith and they are not intended to constitute part of an offer or contract. We have not performed a structural survey on this property and the services, appliances and specific fittings have not been tested. All photographs, measurements, floor plans and distances referred to are given as a guide and should not be relied upon.

BUTLER & STAG

