



Flat 5, Imperial Heights, 126 Manor Road

Chigwell

Guide Price £625,000



Flat 5

Imperial Heights, Chigwell

Exceptional Three-Bedroom Penthouse Apartment in Chigwell's Premier Development.

- Walking Distance to Chigwell and Grange Hill Central Line
- Over 1,500 sq ft of Lateral Living Accomodation
- Secure Allocated Parking Space
- Huge Three Bedroom Apartment
- Principal Bedroom With En-Suite
- Second Bedroom With En-Suite
- Bespoke German Hacker Kitchen With Siemens Appliances
- Impressive Open-Plan Kitchen Lounge Dining Room



Commanding a coveted top-floor position within the prestigious Imperial Heights on Manor Road, this remarkable three-bedroom, three-bathroom penthouse offers an unparalleled combination of scale, style, and sophistication in one of Chigwell's most sought-after addresses.

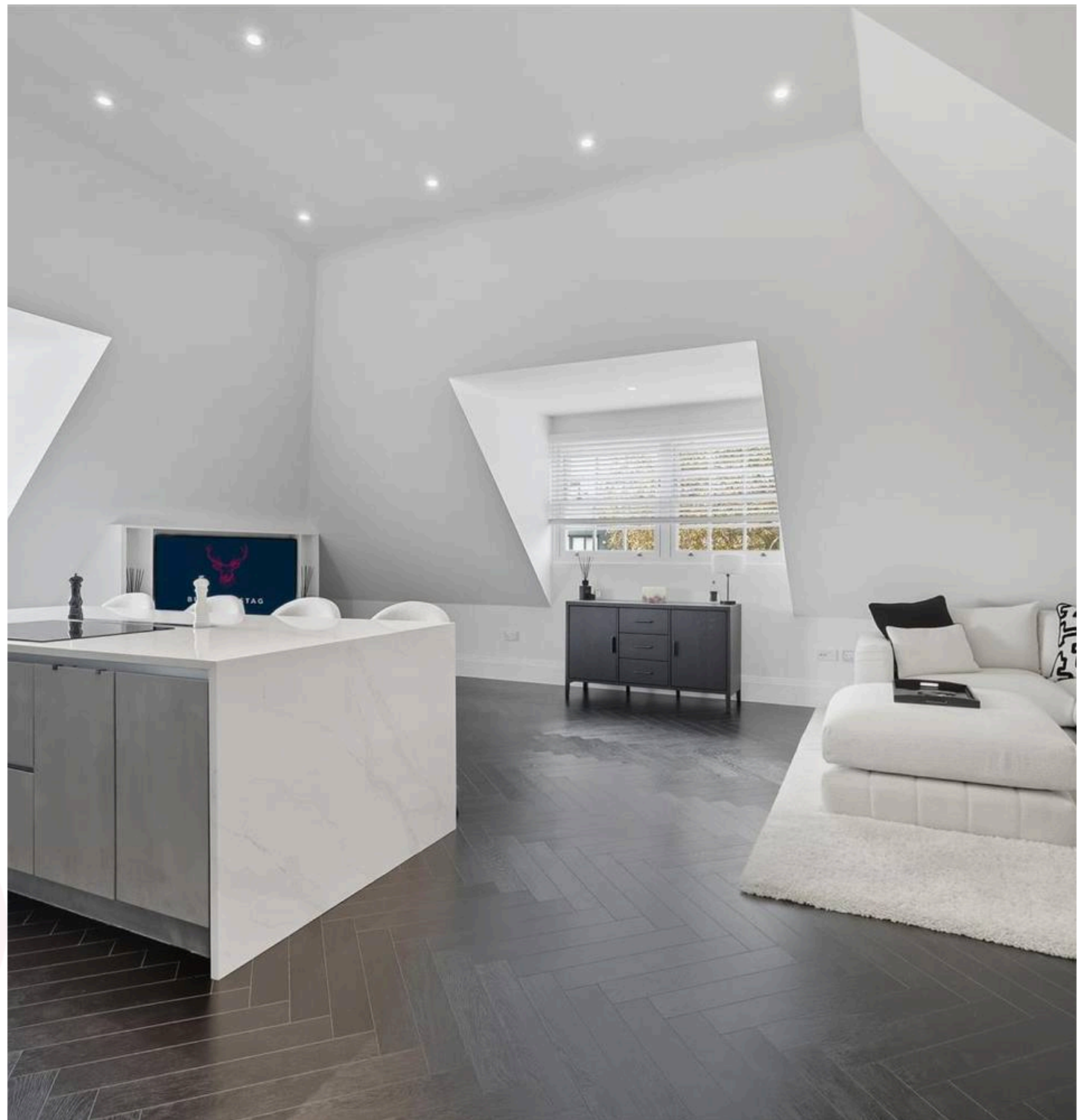
Boasting approximately 1,500 sq. ft. of lateral living space, this penthouse is designed for those who value both luxury and practicality. At its heart lies an expansive open-plan kitchen, living, and dining room measuring over 26ft, a showstopping space perfect for entertaining and everyday family living. Large windows flood the room with natural light, creating a bright and uplifting atmosphere, while elevated views enhance the feeling of exclusivity.

The bespoke German Hacker kitchen is beautifully appointed with quartz worktops, a boiling water tap, an induction hob, and top-of-the-range Siemens integrated appliances, setting the stage for culinary creativity.

The luxurious master bedroom suite features generous proportions, a contemporary en-suite shower room, and ample storage, offering a true private retreat. Two further well-sized double bedrooms provide flexible accommodation – ideal for family, guests, or a home office – with Bedroom 2 also benefiting from its own en-suite. A beautifully designed family bathroom serves Bedroom 3.

Elegant finishes run throughout the property, including herringbone flooring with underfloor heating, recessed lighting, and high ceilings, creating a seamless blend of comfort and sophistication.

Imperial Heights is a landmark gated development offering residents the peace of mind of 24-hour monitored CCTV, video entry, secure allocated





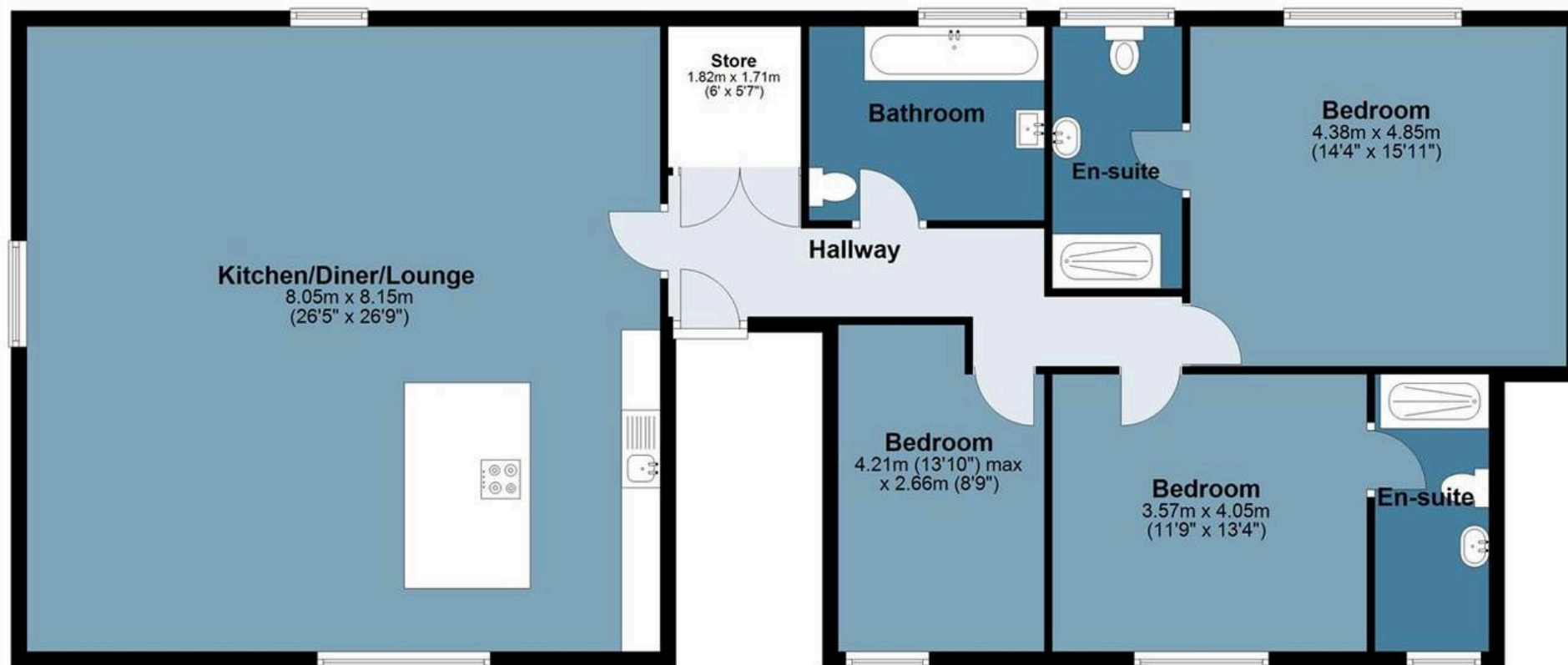


Imperial Heights

Approx. Gross Internal Area 146 Sq M (1571.2 Sq Ft)

Second Floor

Approx. 146.0 sq. metres (1571.2 sq. feet)



Measurements are approximate and for illustration purposes only. While we do not doubt the accuracy and completeness, we advise you conduct a careful independent assessment of the property to determine monetary value.

FROM EAST LONDON ENERGY TO WEST ESSEX EASE

We Make Moving Home Easy.

At Butler and Stag, we do more than just connect London to West Essex – we make the move seamless. With offices spanning from vibrant East London to the tranquillity of West Essex, we understand the nuances of each area and the journey people take between them. Our marketing goes beyond standard listings, showcasing every property with precision, creativity, and reach that others simply can't match. Coupled with an unparalleled attention to detail, from first enquiry to final move-in, we ensure every client and customer feels informed, supported, and confident. Simply put, we do the little things that make a big difference, setting us apart in every step of the property experience.



LONDON STRATFORD SOUTH WOODFORD BUCKHURST HILL LOUGHTON EPPING BEYOND

Like what you see? Let's talk

Book your **FREE** valuation now



01992 667666

theydon@butlerandstag.com

4 Forest Drive, Theydon Bois, CM16 7EY

[butlerandstag.uk](https://www.butlerandstag.uk)

IMPORTANT NOTICE - These particulars have been prepared in good faith and they are not intended to constitute part of an offer or contract. We have not performed a structural survey on this property and the services, appliances and specific fittings have not been tested. All photographs, measurements, floor plans and distances referred to are given as a guide and should not be relied upon.

BUTLER & STAG

