



99 Waverley Avenue, London
London

Guide Price £700,000



99 Waverley Avenue

London

Guide Price £700,000 - £725,000 Situated on a popular residential street, this well-proportioned three-bedroom home offers generous living space across three floors, making it ideal for growing families or those seeking flexible accommodation.

- Mid Terraced Family Home
- Four Bedrooms/Two Bathrooms
- Close To Local Parkland
- Highams Park/Chingford (TFL 5) + Meridian Waters Transport
- Downstairs Shower Room/Utility Room
- Spacious Kitchen/Dining Area



The ground floor comprises a welcoming entrance hallway leading to a bright and spacious living room to the front. To the rear, a large open-plan kitchen/breakfast room provides an excellent space for everyday living and entertaining, flowing through to a separate dining room. A useful utility area and ground floor bathroom add further practicality.

On the first floor, the property offers three well-sized bedrooms, including a particularly spacious principal bedroom and a second double bedroom. A modern family bathroom serves this level.

The fourth bedroom is located on the second floor benefiting from additional eaves storage.

With approximately 1,378 sq ft of internal space, this home combines generous room sizes with a flexible layout, suited to modern living.

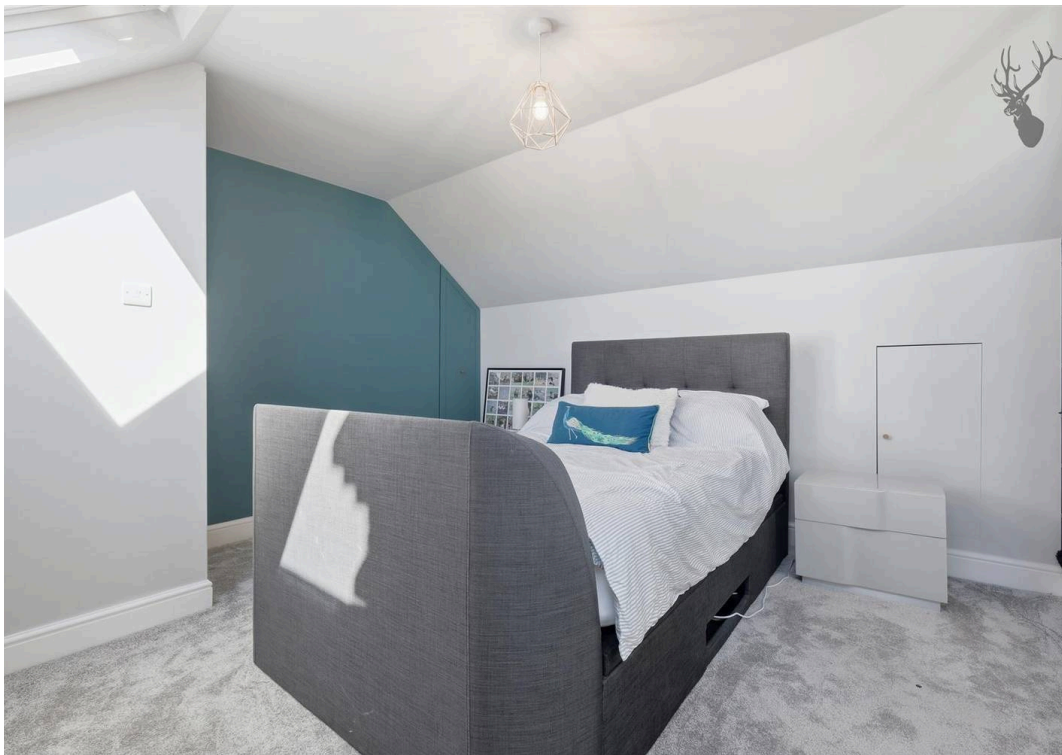
Council Tax band: D

Tenure: Freehold

EPC Energy Efficiency Rating: C

EPC Environmental Impact Rating: C







Waverley Avenue

Approx. Gross Internal Area 128.0 sq. metres 1378.2 sq. feet)



Total area: approx. 128.0 sq. metres (1378.2 sq. feet)

All measurements have been taken as a guide to prospective buyers only and are not precise. This plan is for illustrative purposes only and no responsibility for any error, omission or misstatement. The services, systems and appliances shown have not been tested and no guarantee as to their operability or efficiency can be given. Measurements may have been taken from the widest area and may include wardrobe/cupboard space. No guarantee is given to any measurements including total areas. Buyers are advised to take their own measurements.

© @modephotouk | www.modephoto.co.uk
Plan produced using PlanUp. □

Measurements are approximate and for illustration purposes only. While we do not doubt the accuracy and completeness, we advise you conduct a careful independent assessment of the property to determine monetary value

© @modephotouk www.modephoto.co.uk

FROM EAST LONDON ENERGY TO WEST ESSEX EASE

We Make Moving Home Easy.

At Butler and Stag, we do more than just connect London to West Essex – we make the move seamless. With offices spanning from vibrant East London to the tranquillity of West Essex, we understand the nuances of each area and the journey people take between them. Our marketing goes beyond standard listings, showcasing every property with precision, creativity, and reach that others simply can't match. Coupled with an unparalleled attention to detail, from first enquiry to final move-in, we ensure every client and customer feels informed, supported, and confident. Simply put, we do the little things that make a big difference, setting us apart in every step of the property experience.



LONDON STRATFORD SOUTH WOODFORD BUCKHURST HILL LOUGHTON EPPING BEYOND

Like what you see? Let's talk

Book your **FREE** valuation now



01992 667666

theydon@butlerandstag.com

4 Forest Drive, Theydon Bois, CM16 7EY

[butlerandstag.uk](https://www.butlerandstag.uk)

IMPORTANT NOTICE - These particulars have been prepared in good faith and they are not intended to constitute part of an offer or contract. We have not performed a structural survey on this property and the services, appliances and specific fittings have not been tested. All photographs, measurements, floor plans and distances referred to are given as a guide and should not be relied upon.

BUTLER & STAG

