



City West Tower, Stratford, E15  
London

Guide Price £425,000



## City West Tower, Stratford, E15

London

Price Guide £425,000 - £450,000 Welcome to the epitome of contemporary urban living – the prestigious City West Tower in the vibrant heart of Stratford. Discover the pinnacle of sophistication in this stunning three bedroom apartment, where luxury, comfort, and convenience converge.

- 980 Sq/Ft Internal Living Space
- Three Bedrooms
- Roof Top Gardens / Bike Storage
- Chain Free
- Two Bathrooms
- EWS1 Compliant
- 986 Year Lease
- 24hr Concierge Service / Resident Only Gymnasium / Two Business Lounges
- Stratford Station and Bromley By Bow Stations Close By
- Waterside Complex



Upon entering this residence, you're immediately struck by the seamless blend of style and functionality. The spacious open-plan living area is bathed in natural light, courtesy of floor-to-ceiling windows that offer panoramic views of the iconic east London landscape. This expansive space provides the perfect backdrop for every occasion.

The sleek and modern kitchen boasts premium appliances, stylish cabinetry, and quartz countertops.

The three well-appointed bedrooms are thoughtfully designed with plush carpeting, ample closet space, and large windows that frame breath-taking views. The principal bedroom is a true retreat, featuring a luxurious en-suite bathroom and fitted wardrobes.

Conveniently located in the heart of Stratford, this exceptional residence offers unrivaled access to an abundance of dining, shopping, and entertainment options. With Stratford International station just moments away, the entirety of London is at your doorstep, providing endless opportunities for exploration and adventure.

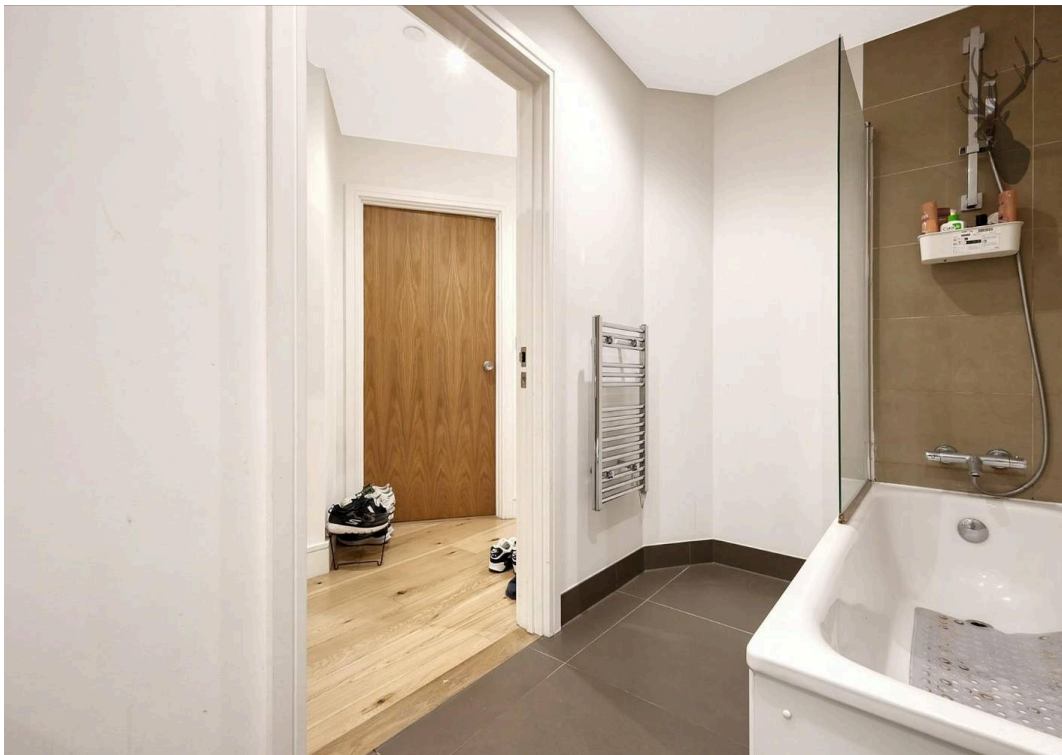
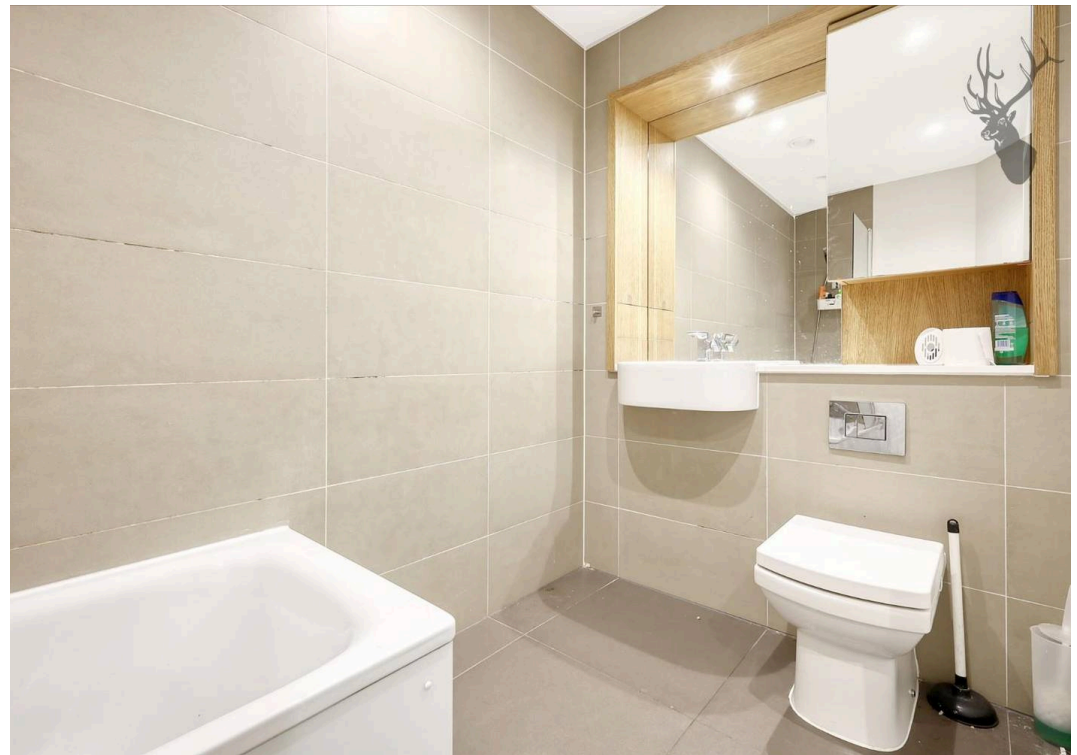
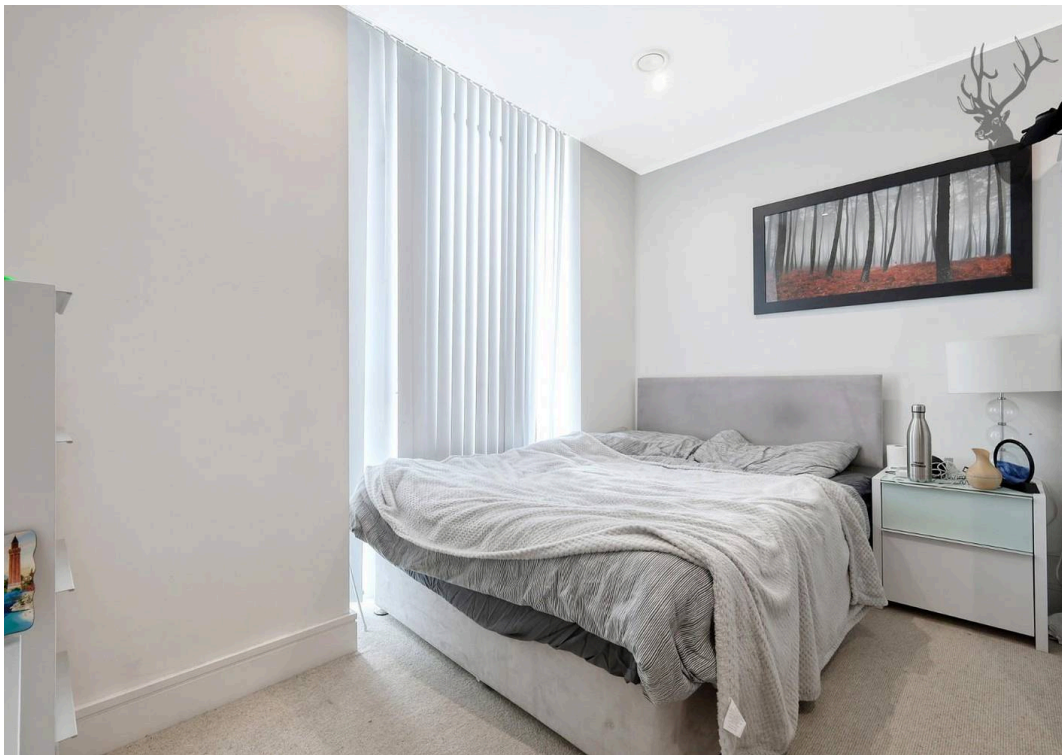
Council Tax band: D

Tenure: Leasehold

EPC Energy Efficiency Rating: B

EPC Environmental Impact Rating: B







# City West Tower

Approx. Gross Internal Area 91.06 Sq M ( 980 Sq Ft )

BUTLER & STAG



## NINTH FLOOR



Measurements are approximate and for illustration purposes only. While we do not doubt the accuracy and completeness, we advise you conduct a careful independent assessment of the property to determine monetary value.

© @modephoto.uk www.modephoto.co.uk

# FROM EAST LONDON ENERGY TO WEST ESSEX EASE

## We Make Moving Home Easy.

At Butler and Stag, we do more than just connect London to West Essex – we make the move seamless. With offices spanning from vibrant East London to the tranquillity of West Essex, we understand the nuances of each area and the journey people take between them. Our marketing goes beyond standard listings, showcasing every property with precision, creativity, and reach that others simply can't match. Coupled with an unparalleled attention to detail, from first enquiry to final move-in, we ensure every client and customer feels informed, supported, and confident. Simply put, we do the little things that make a big difference, setting us apart in every step of the property experience.



LONDON   STRATFORD   SOUTH WOODFORD   BUCKHURST HILL   LOUGHTON   EPPING   BEYOND

# Like what you see? Let's talk

Book your **FREE** valuation now



020 8102 1236

[london@butlerandstag.com](mailto:london@butlerandstag.com)

508 Roman Road, Bow, London, E3 5LU

[butlerandstag.uk](http://butlerandstag.uk)

IMPORTANT NOTICE - These particulars have been prepared in good faith and they are not intended to constitute part of an offer or contract. We have not performed a structural survey on this property and the services, appliances and specific fittings have not been tested. All photographs, measurements, floor plans and distances referred to are given as a guide and should not be relied upon.

BUTLER & STAG

