

BUTLER & STAG

Enfield Road, De Beauvoir, N1
London

Offers Over £475,000



Enfield Road, De Beauvoir, N1

London

Set within a stylish modern development on a pretty tree lined turning - Enfield Road, Haggerston, this impressive third-floor two-bedroom, two-bathroom apartment offers 687 Sq/Ft of living space with access to exclusive on-site facilities, including a residents' gym, sauna, and concierge service.

- Two Double Bedrooms
- Resident Only Gym & Sauna
- Haggerston Station A Moments Walk Away
- Concierge on Site
- Third Floor Apartment
- Chain Free
- Gated Development
- Two Bathrooms (one en-suite)



The apartment features a bright open-plan living area with floor-to-ceiling windows that fill the space with natural light and provide a contemporary city feel. The modern fitted kitchen is sleek and functional, complete with integrated appliances and ample storage. Both bedrooms are generously sized, with the principal bedroom benefiting from an en-suite shower room, while a stylish main bathroom serves the second bedroom.

Perfectly positioned just moments from Haggerston Overground Station, with easy access to Shoreditch, Dalston, and the Regent's Canal, this property offers an ideal base for professionals and investors alike.

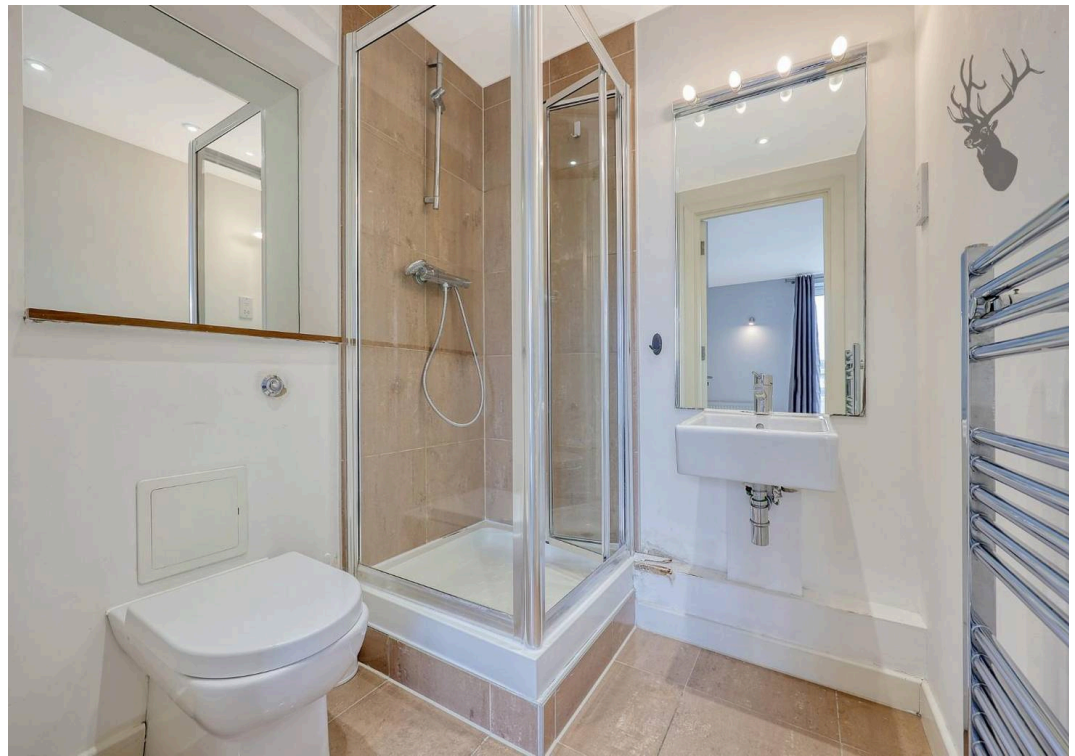
Council Tax band: E

Tenure: Leasehold

EPC Energy Efficiency Rating: B

EPC Environmental Impact Rating: B





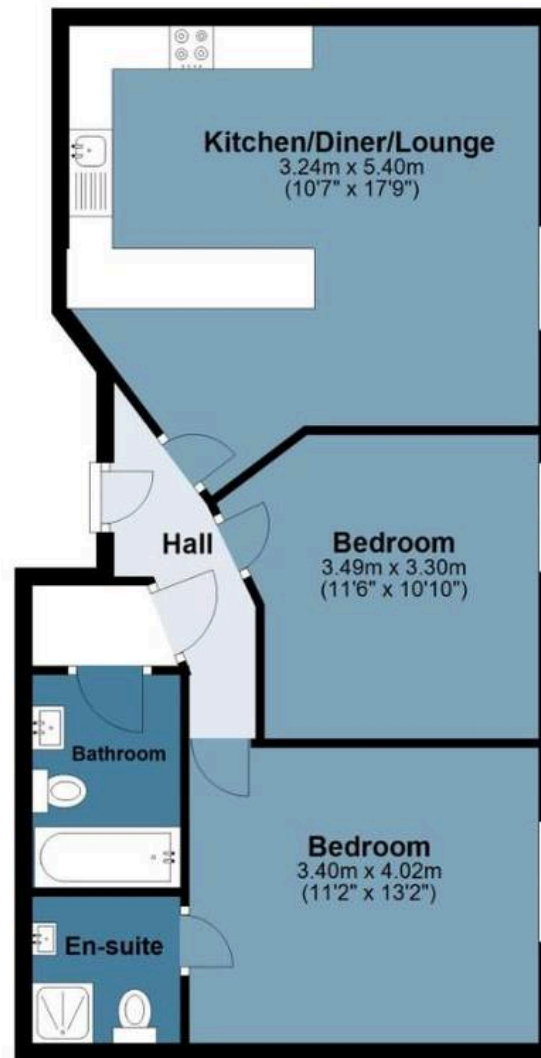


Enfield Road

Approx. Gross Internal Area 63.9 Sq M (687.8 Sq Ft)

Third Floor

Approx. 63.9 sq. metres (687.8 sq. feet)



Measurements are approximate and for illustration purposes only. While we do not doubt the accuracy and completeness, we advise you conduct a careful independent assessment of the property to determine monetary value.

FROM EAST LONDON ENERGY TO WEST ESSEX EASE

We Make Moving Home Easy.

At Butler and Stag, we do more than just connect London to West Essex – we make the move seamless. With offices spanning from vibrant East London to the tranquillity of West Essex, we understand the nuances of each area and the journey people take between them. Our marketing goes beyond standard listings, showcasing every property with precision, creativity, and reach that others simply can't match. Coupled with an unparalleled attention to detail, from first enquiry to final move-in, we ensure every client and customer feels informed, supported, and confident. Simply put, we do the little things that make a big difference, setting us apart in every step of the property experience.



LONDON STRATFORD SOUTH WOODFORD BUCKHURST HILL LOUGHTON EPPING BEYOND

Like what you see? Let's talk

Book your **FREE** valuation now



020 8102 1236

london@butlerandstag.com

508 Roman Road, Bow, London, E3 5LU

butlerandstag.uk

IMPORTANT NOTICE - These particulars have been prepared in good faith and they are not intended to constitute part of an offer or contract. We have not performed a structural survey on this property and the services, appliances and specific fittings have not been tested. All photographs, measurements, floor plans and distances referred to are given as a guide and should not be relied upon.

BUTLER & STAG

