

BUTLER & STAG

Fondant Court, Bow, E3
London

£250,000





Fondant Court, Bow, E3

London

Guide Price £250,000 - £275,000 This bright and spacious one-bedroom apartment, set within a secure and modern development in Bow, is perfect for professionals or couples seeking a contemporary living space with added amenities.

- Far Fetching Viewings Of London's Skyline
- 24 Hour Concierge
- Twelfth Floor
- Private Balcony
- Chain Free
- EWS1 Compliant
- Secure Gated Development
- Lift-Service To All Levels



Hotpoint

No Frost

The apartment features a large open-plan living and dining area, perfect for entertaining. The space is flooded with natural light thanks to the floor-to-ceiling windows, providing a welcoming atmosphere throughout the day.

Enjoy your own private balcony, providing a perfect spot for morning coffees or evening relaxation.

With well-planned storage solutions, including built-in wardrobes in the bedroom and additional storage cupboards, this apartment offers plenty of room to keep your belongings organized and the living areas clutter-free.

The comfortable double bedroom provides a peaceful retreat, complete with built-in wardrobes and generous space for additional furnishings if required.

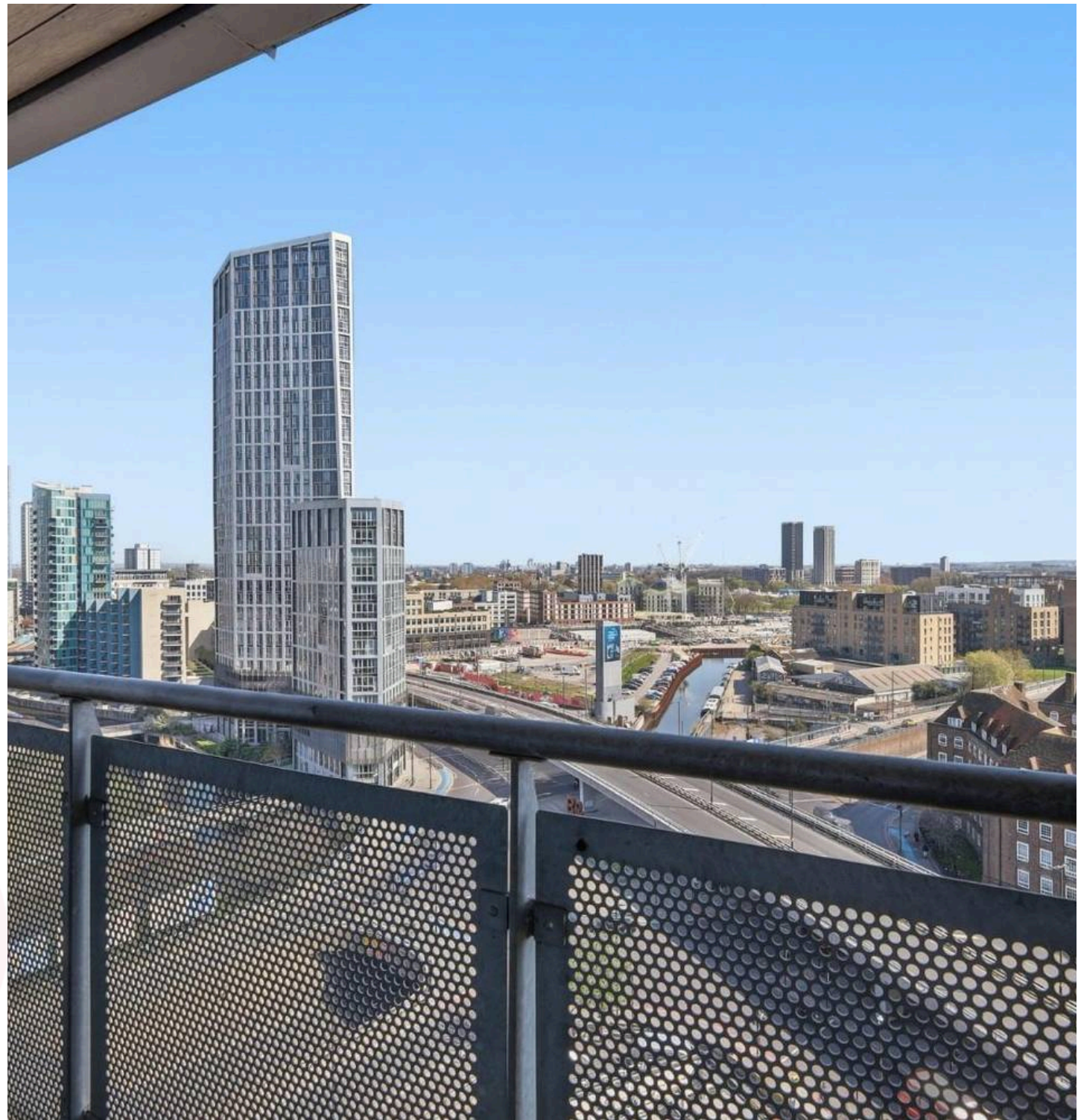
The development includes a 24-hour concierge service, providing both security and convenience for residents. Whether it's receiving parcels or assistance with general enquiries, the concierge is always on hand.

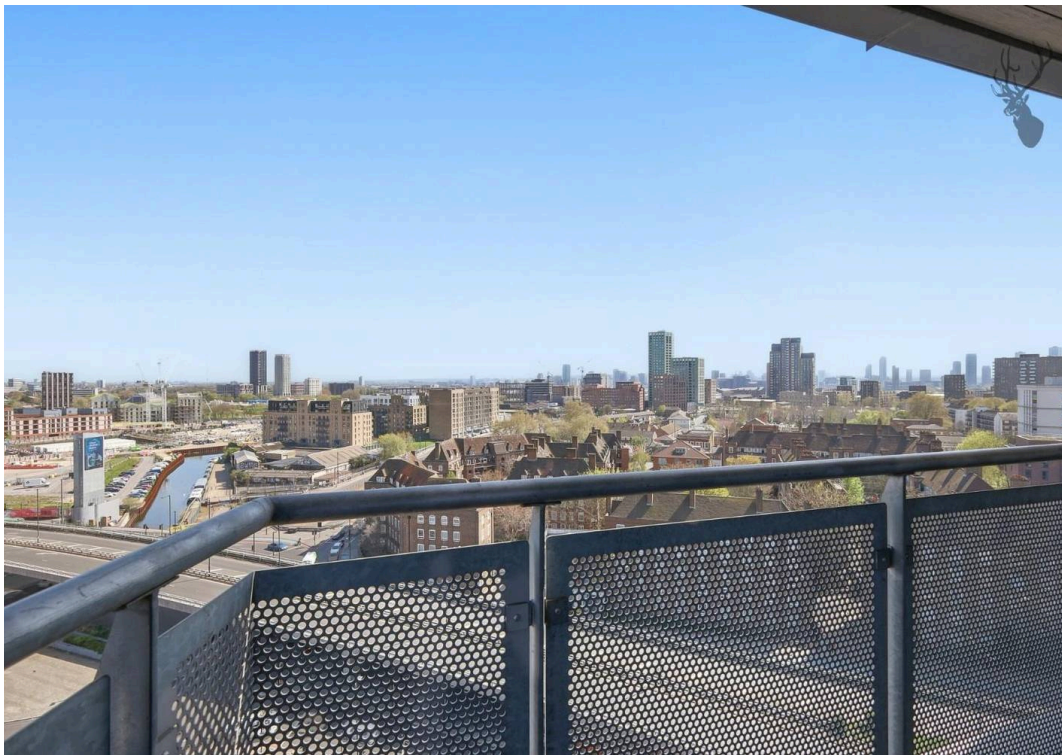
Ideally located in Bow, the apartment is within walking distance of several transport options, including the DLR and London Underground, providing quick and easy access to Canary Wharf, the City, and beyond. Numerous bus routes are also available nearby.

Bow offers a vibrant local community with independent shops, restaurants, and cafés, as well as being close to green spaces like Victoria Park and the Olympic Park. The nearby Roman Road market also offers a range of unique shopping opportunities.

Council Tax band: C

Tenure: Leasehold



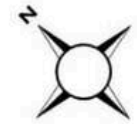




Fondant Court

Approx. Gross Internal Area 49.5 Sq M (533.2 Sq Ft)

BUTLER & STAG



Twelfth Floor

Approx. 49.5 sq. metres (533.2 sq. feet)



Measurements are approximate and for illustration purposes only. While we do not doubt the accuracy and completeness, we advise you conduct a careful independent assessment of the property to determine monetary value.

© @modephotouk www.modephoto.co.uk

FROM EAST LONDON ENERGY TO WEST ESSEX EASE

We Make Moving Home Easy.

At Butler and Stag, we do more than just connect London to West Essex – we make the move seamless. With offices spanning from vibrant East London to the tranquillity of West Essex, we understand the nuances of each area and the journey people take between them. Our marketing goes beyond standard listings, showcasing every property with precision, creativity, and reach that others simply can't match. Coupled with an unparalleled attention to detail, from first enquiry to final move-in, we ensure every client and customer feels informed, supported, and confident. Simply put, we do the little things that make a big difference, setting us apart in every step of the property experience.



LONDON STRATFORD SOUTH WOODFORD BUCKHURST HILL LOUGHTON EPPING BEYOND

Like what you see? Let's talk

Book your **FREE** valuation now



020 8102 1236

london@butlerandstag.com

508 Roman Road, Bow, London, E3 5LU

butlerandstag.uk

IMPORTANT NOTICE - These particulars have been prepared in good faith and they are not intended to constitute part of an offer or contract. We have not performed a structural survey on this property and the services, appliances and specific fittings have not been tested. All photographs, measurements, floor plans and distances referred to are given as a guide and should not be relied upon.

BUTLER & STAG

