



Devizes Street, London, N1  
London

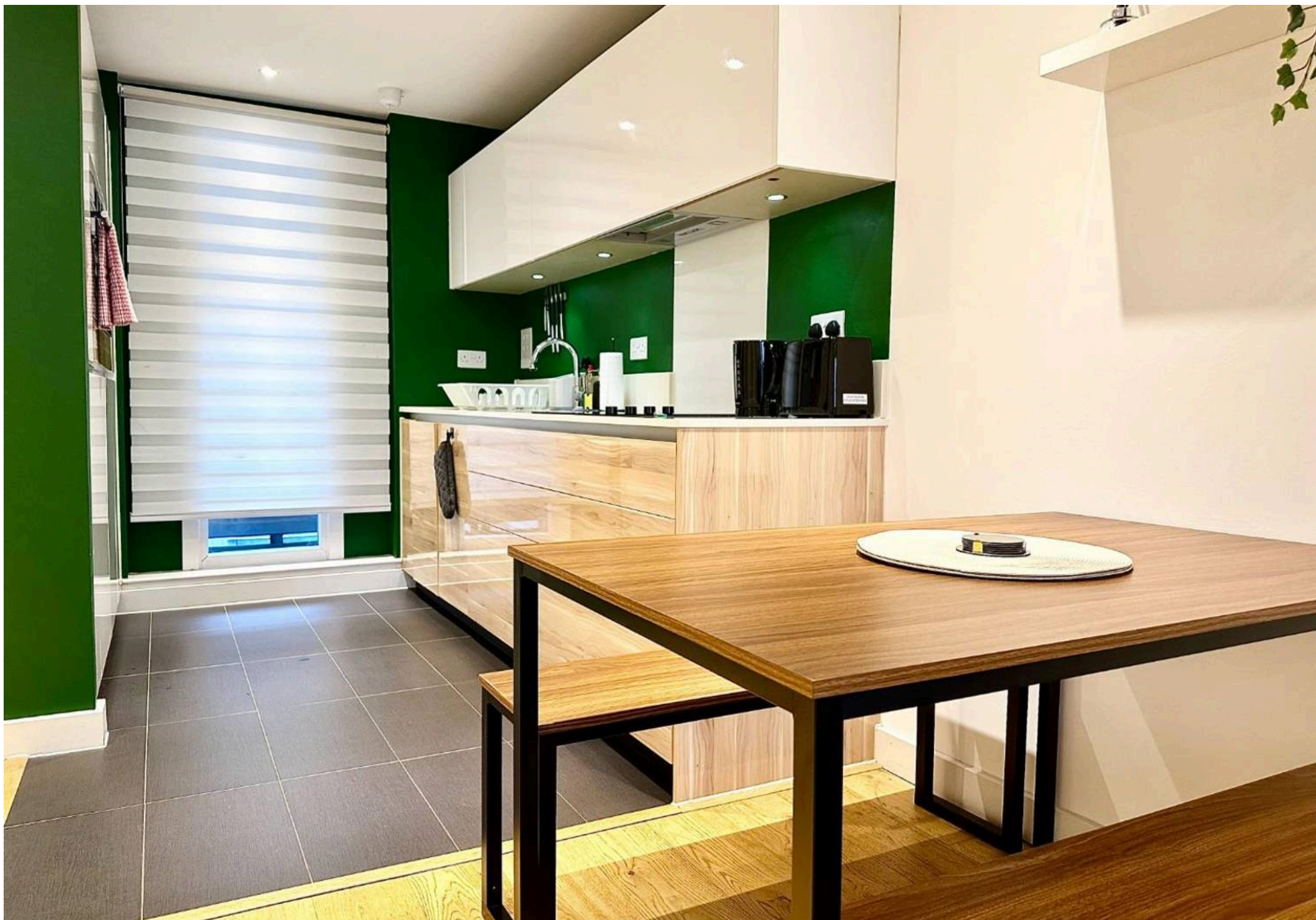
Fixed Price £425,000



## Devizes Street, London, N1

A stylish and modern one-bedroom, one-bathroom apartment ideally located just moments from the Regents Canal and Shoreditch Park.

- Modern Fixtures & Finishings
- Large Double Bedroom
- Great Local Amenities
- Haggerston & Hoxton Stations Close By
- Canal Walks Close By
- Short Walk to Shoreditch Park
- EWS1 Compliant
- Lift Access
- Modern Apartment



This well-presented home features a bright open-plan living space, a contemporary kitchen, and a sleek bathroom. The bedroom is generously sized, offering a calm and comfortable retreat. Perfect for professionals or couples seeking modern living with excellent local amenities and transport links close by.

The property also benefits from excellent natural light throughout, modern fixtures and fittings, and a well-thought-out layout that maximises space and comfort.

Haggerston Station is close by, providing excellent transport links, while Shoreditch Park is within easy reach for green space and leisure. Set in a sought-after location, residents can enjoy scenic canal-side walks alongside the vibrant lifestyle offered by the surrounding area.

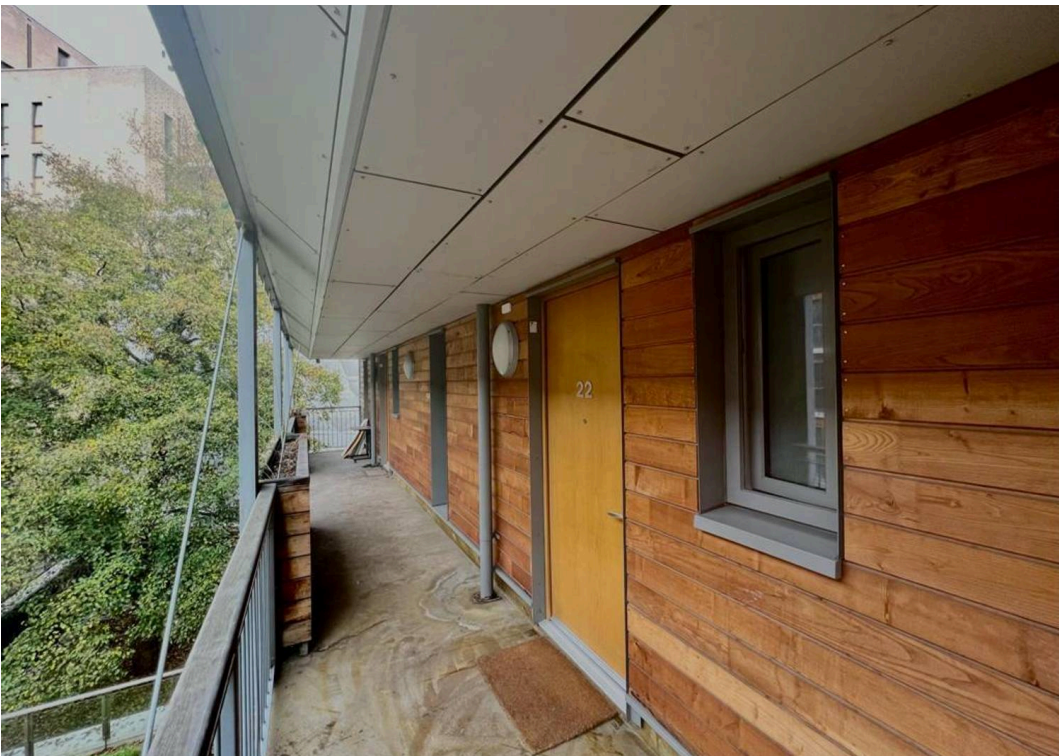
Council Tax band: C

Tenure: Leasehold

EPC Energy Efficiency Rating: B

EPC Environmental Impact Rating: B









GLA<sup>®</sup>  
46.94 m<sup>2</sup>  
505.22 ft<sup>2</sup>

(1) Finished, above grade

Ext. wall thickness assumed: 15.24  
cm/6 in

Calculations reference the ANSI-2765  
standard. Measurements are  
approximate and not to scale. This  
floor plan is intended for illustration  
only.

GIRAFFE 360



# FROM EAST LONDON ENERGY TO WEST ESSEX EASE

## We Make Moving Home Easy.

At Butler and Stag, we do more than just connect London to West Essex – we make the move seamless. With offices spanning from vibrant East London to the tranquillity of West Essex, we understand the nuances of each area and the journey people take between them. Our marketing goes beyond standard listings, showcasing every property with precision, creativity, and reach that others simply can't match. Coupled with an unparalleled attention to detail, from first enquiry to final move-in, we ensure every client and customer feels informed, supported, and confident. Simply put, we do the little things that make a big difference, setting us apart in every step of the property experience.



LONDON   STRATFORD   SOUTH WOODFORD   BUCKHURST HILL   LOUGHTON   EPPING   BEYOND

# Like what you see? Let's talk

Book your **FREE** valuation now



020 8102 1236

[london@butlerandstag.com](mailto:london@butlerandstag.com)

508 Roman Road, Bow, London, E3 5LU

[butlerandstag.uk](http://butlerandstag.uk)

IMPORTANT NOTICE - These particulars have been prepared in good faith and they are not intended to constitute part of an offer or contract. We have not performed a structural survey on this property and the services, appliances and specific fittings have not been tested. All photographs, measurements, floor plans and distances referred to are given as a guide and should not be relied upon.

BUTLER & STAG

