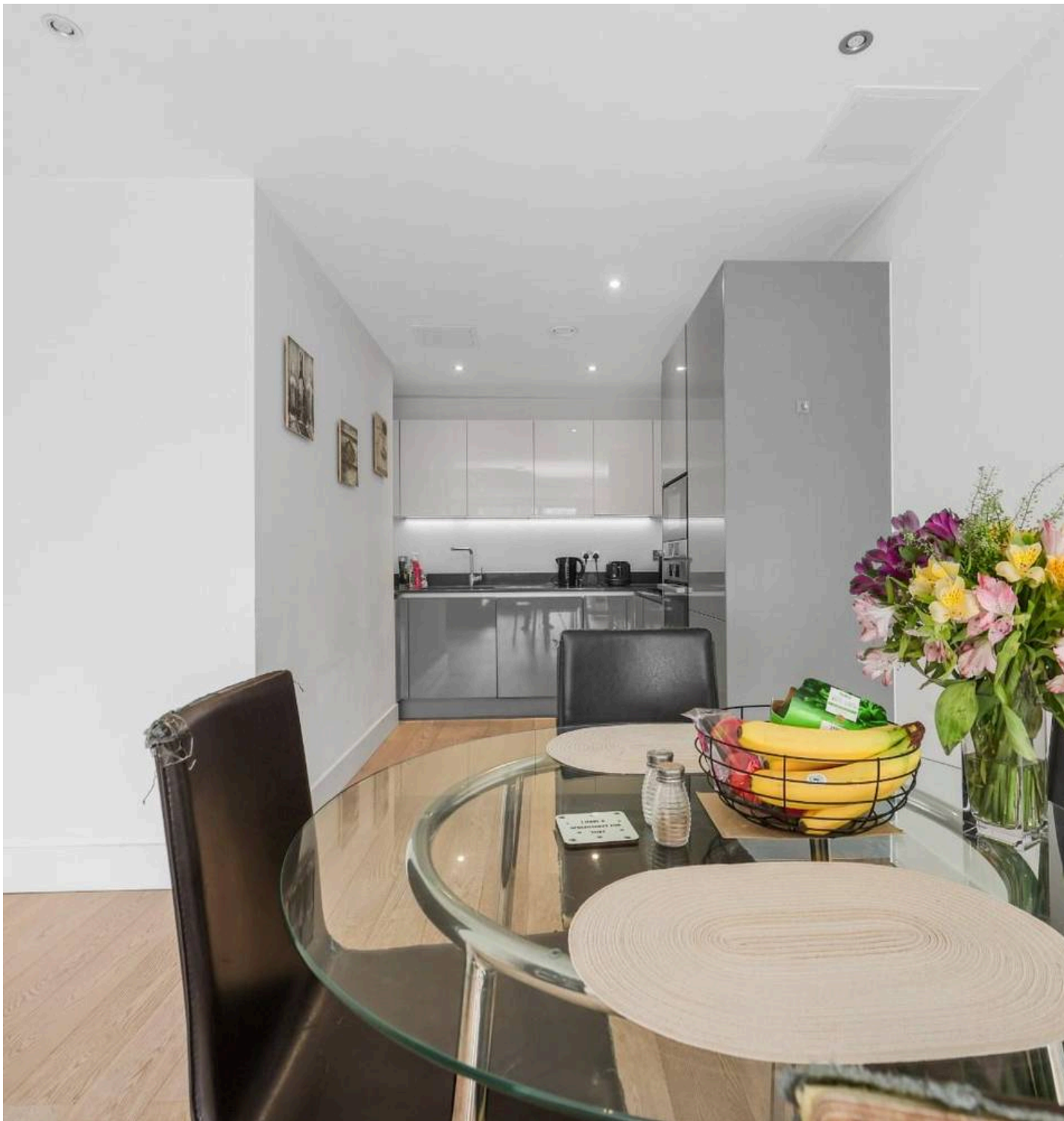


Acacia House, Bow, E3  
London

Guide Price £400,000



## Acacia House, Bow, E3

London

Guide Price £400,000 - £425,000 Situated conveniently in the vibrant area of Bow Road, London, this exquisite two bedroom apartment offers a modern living experience that is both stylish and comfortable. Spanning an impressive 798 square feet, this fourth-floor residence features two well-appointed bedrooms and two contemporary bathrooms, making it an ideal choice for professionals, couples, or small families.

- Two Double Bedrooms
- Two Bathrooms
- Private Balcony
- Great Transport Links
- Spanning 798 Square Feet Of Internal Living Space
- Immaculate Condition Throughout
- Fourth Floor Apartment
- Bright, Open Plan Living Space



This exceptional property offers a bright and spacious open-plan kitchen and reception room, enhanced by expansive windows that flood the space with natural light. Finished to a high specification throughout, the home exudes quality and sophistication, with meticulous attention to detail evident in every aspect of its design.

Constructed in 2016, the property seamlessly combines contemporary architecture with practical living. The open-plan layout creates an impressive sense of space, ideal for both entertaining and everyday living. The bedrooms are generously proportioned, benefiting from excellent natural light and ample storage, while the bathrooms are elegantly appointed with stylish, high-quality fixtures and fittings.

Located in the vibrant and highly sought-after Bow area of East London, the property benefits from excellent transport links. Commuters will enjoy easy access to both underground and light rail services, including Bow Road (District and Hammersmith & City lines) and Bow Church DLR, with additional connections nearby via Devons Road station – all providing swift journeys into Central London and beyond.

Residents will also enjoy an array of local amenities, including boutique shops, restaurants, cafés, and green spaces.

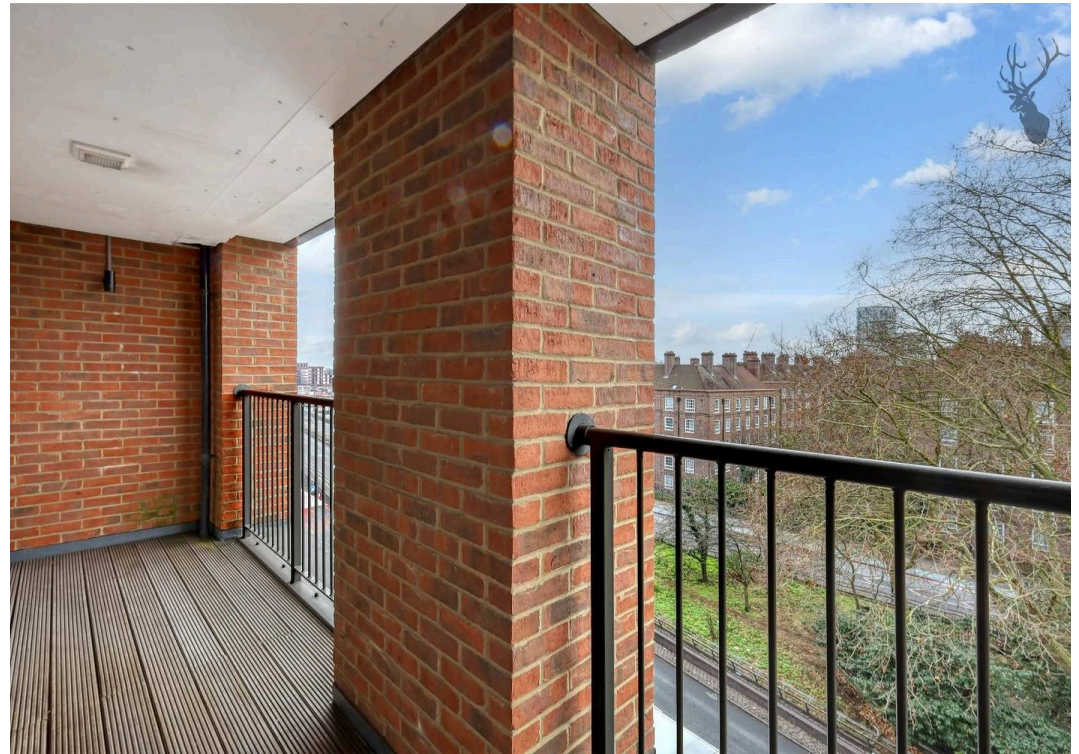
Council Tax band: D

Tenure: Leasehold

EPC Energy Efficiency Rating: B

EPC Environmental Impact Rating: B







# Accacia House

Approx. Gross Internal Area 74.2 sq. metres (798.7 sq. feet)



Measurements are approximate and for illustration purposes only. While we do not doubt the accuracy and completeness, we advise you conduct a careful independent assessment of the property to determine monetary value

© @modephotouk www.modephoto.co.uk

# FROM EAST LONDON ENERGY TO WEST ESSEX EASE

## We Make Moving Home Easy.

At Butler and Stag, we do more than just connect London to West Essex – we make the move seamless. With offices spanning from vibrant East London to the tranquillity of West Essex, we understand the nuances of each area and the journey people take between them. Our marketing goes beyond standard listings, showcasing every property with precision, creativity, and reach that others simply can't match. Coupled with an unparalleled attention to detail, from first enquiry to final move-in, we ensure every client and customer feels informed, supported, and confident. Simply put, we do the little things that make a big difference, setting us apart in every step of the property experience.



LONDON   STRATFORD   SOUTH WOODFORD   BUCKHURST HILL   LOUGHTON   EPPING   BEYOND

# Like what you see? Let's talk

Book your **FREE** valuation now



020 8102 1236

[london@butlerandstag.com](mailto:london@butlerandstag.com)

508 Roman Road, Bow, London, E3 5LU

[butlerandstag.uk](http://butlerandstag.uk)

IMPORTANT NOTICE - These particulars have been prepared in good faith and they are not intended to constitute part of an offer or contract. We have not performed a structural survey on this property and the services, appliances and specific fittings have not been tested. All photographs, measurements, floor plans and distances referred to are given as a guide and should not be relied upon.

BUTLER & STAG

