



Driffield Road, Bow, E3
London

Guide Price £1,500,000



Driffield Road, Bow, E3

London

Guide Price £1,500,000 - £1,550,000 Nestled within the sought-after Driffield Road Conservation Area and just moments from the open green spaces of Victoria Park, this beautifully extended four-bedroom, three-bathroom Victorian house has been meticulously renovated to an exceptional finish. Blending period charm with contemporary design, this versatile family home offers over 1600 Sq/Ft of generous living space and a seamless balance of comfort, style, and functionality.

- Meticulously Renovated Throughout
- Landscaped Private Garden
- Three Bathrooms
- Victoria Park A Moments Walk Away
- Victorian (Freehold) House
- Hard Wood Floors / Quartz Work Surfaces / Exposed Brick Work / Column Radiators
- 1606 Sq/Ft Internal Living Space
- Four Bedrooms
- Versatile Living Space
- Potential To Extend (Subject To Planning)

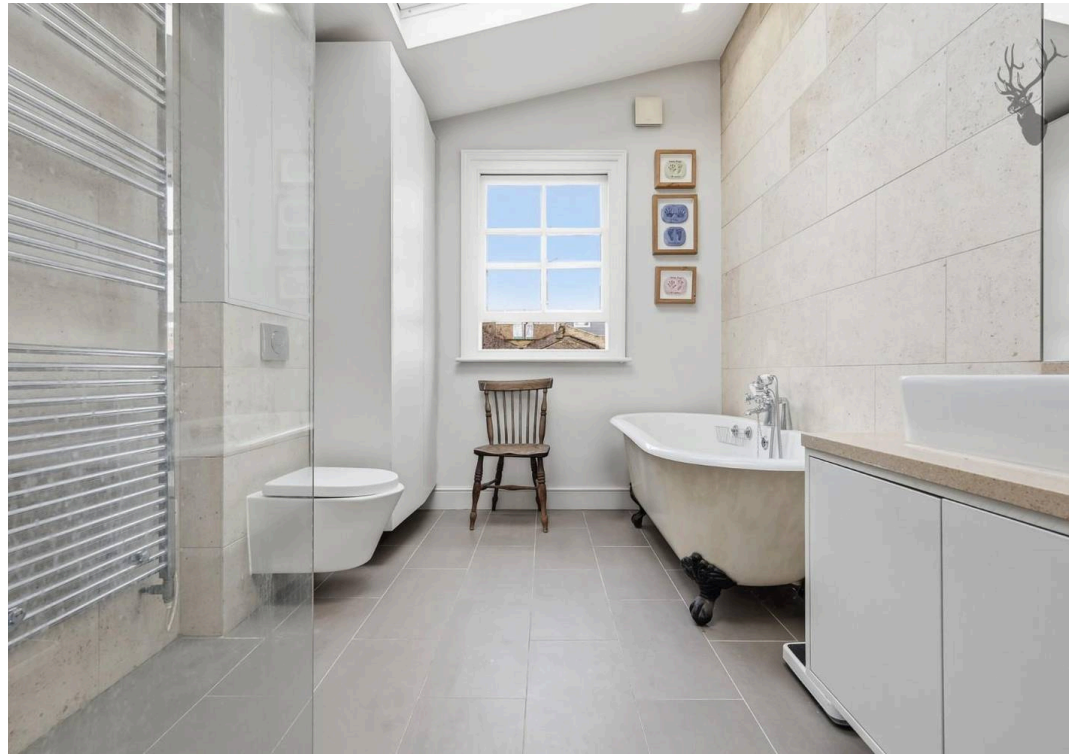
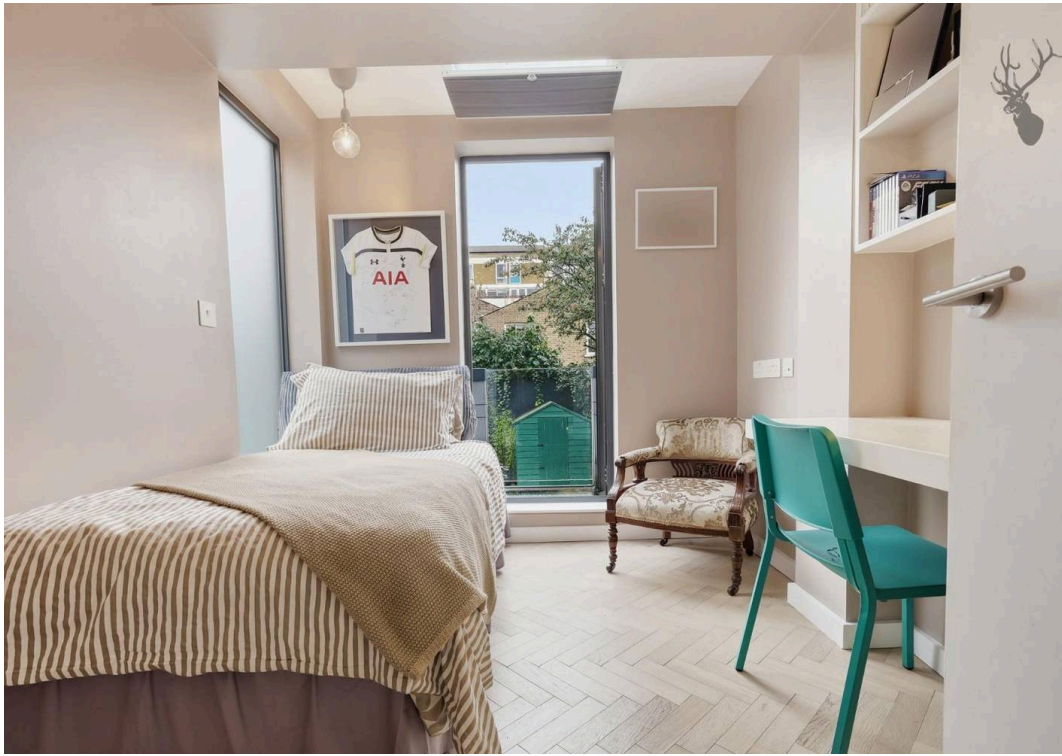


Spread across three levels, this residence boasts generously proportioned living spaces including a double through-reception room, offering excellent flexibility and the ability to be divided via bi-folding doors. This elegant space is enhanced by hardwood flooring, traditional sash windows, and stylish column radiators, all set against a backdrop of light-filled, tastefully curated décor that complements the home's Victorian character. Completing the ground floor, to the rear of the home, is a well-appointed bedroom within the back addition, benefitting from its own en-suite shower room and a private balcony overlooking the landscaped garden. This versatile space is ideal as a guest suite or private retreat, offering a peaceful outlook and a strong connection to the outdoor space.

Extended to the lower ground floor, the kitchen-diner forms the true heart of the home, thoughtfully designed for both everyday living and entertaining. The space features herringbone-laid wooden flooring, beautifully complementing the sleek, handle-less cabinetry and quartz worktops, creating a clean yet warm aesthetic. Exposed brickwork adds character and texture, while a striking central island with mirrored panels provides a stylish focal point as well as practical preparation and seating space. Full-height doors open directly onto a landscaped garden, seamlessly blending indoor and outdoor living and allowing natural light to flood the room.

Occupying the top floor are two lavishly proportioned bedrooms, both beautifully presented and filled with natural light. Serving this level is an opulent, family-sized bathroom, featuring a striking roll-top bath, concealed fittings, a floating sink unit, and natural stone tiling, creating a spa-like retreat that perfectly balances luxury and practicality.

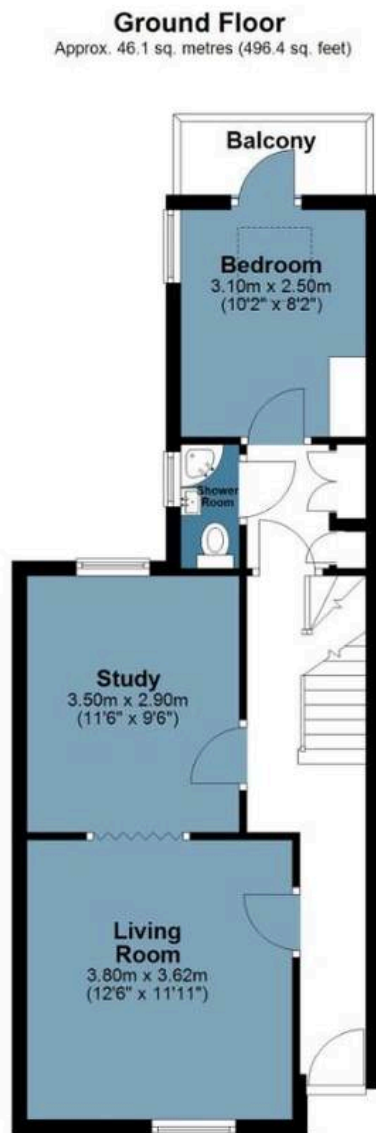
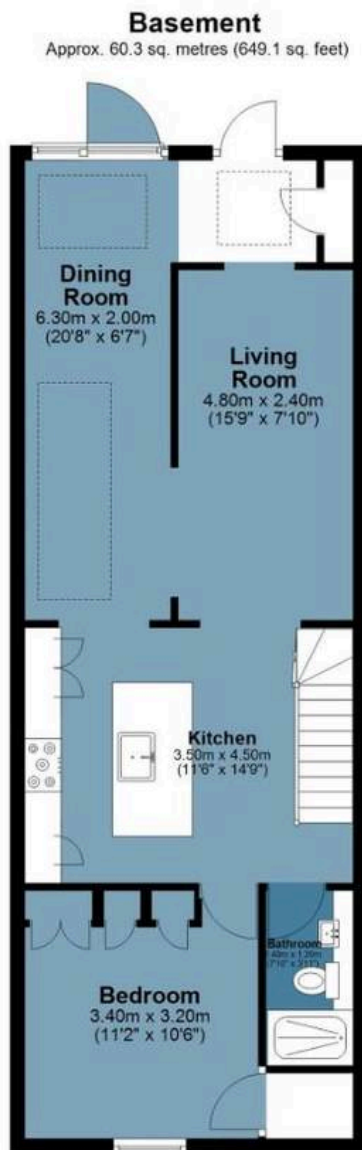






Drifffield Road

Approx. Gross Internal Area 149.2 Sq M (1606 Sq Ft)



Measurements are approximate and for illustration purposes only. While we do not doubt the accuracy and completeness, we advise you conduct a careful independent assessment of the property to determine monetary value.

FROM EAST LONDON ENERGY TO WEST ESSEX EASE

We Make Moving Home Easy.

At Butler and Stag, we do more than just connect London to West Essex – we make the move seamless. With offices spanning from vibrant East London to the tranquillity of West Essex, we understand the nuances of each area and the journey people take between them. Our marketing goes beyond standard listings, showcasing every property with precision, creativity, and reach that others simply can't match. Coupled with an unparalleled attention to detail, from first enquiry to final move-in, we ensure every client and customer feels informed, supported, and confident. Simply put, we do the little things that make a big difference, setting us apart in every step of the property experience.



LONDON STRATFORD SOUTH WOODFORD BUCKHURST HILL LOUGHTON EPPING BEYOND

Like what you see? Let's talk

Book your **FREE** valuation now



020 8102 1236

london@butlerandstag.com

508 Roman Road, Bow, London, E3 5LU

butlerandstag.uk

IMPORTANT NOTICE - These particulars have been prepared in good faith and they are not intended to constitute part of an offer or contract. We have not performed a structural survey on this property and the services, appliances and specific fittings have not been tested. All photographs, measurements, floor plans and distances referred to are given as a guide and should not be relied upon.

BUTLER & STAG

