



17 The Glade, Woodford Green

Woodford Green

Guide Price £1,400,000



17 The Glade

Woodford Green

Guide Price £1,400,000-£1,450,000. Located on the highly sought-after Knighton Estate, sits this beautifully presented detached family home offers circa 2,000 Sq. ft of internal living accommodation.

- Being Sold With No Onward Chain
- Detached Family Home
- Utility & Boot Room With Steam Room
- Principle Bedroom With En-Suite And Fitted Wardrobes
- Potential To Extend (STPP)
- CCTV & Fitted Alarm System
- Separate Formal Lounge
- Stunning Open Plan Lounge/Kitchen/Dining Area With Bi-Folding Doors To Rear Garden
- Walking Distance To Local Schooling (State & Private)
- Sought After Knighton Estate



Set within a peaceful and highly desirable Woodford Green location, The Glade offers the perfect blend of contemporary style and versatile family living. This beautifully designed four-bedroom home spans two spacious floors, providing an exceptional layout ideal for modern lifestyles.

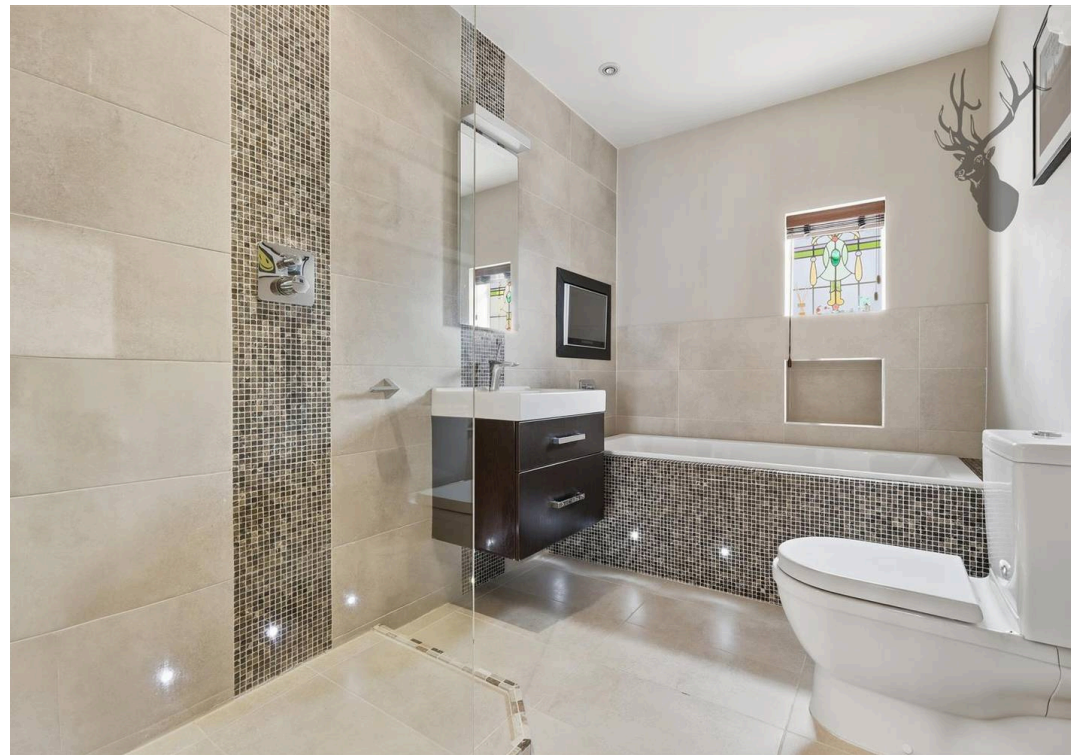
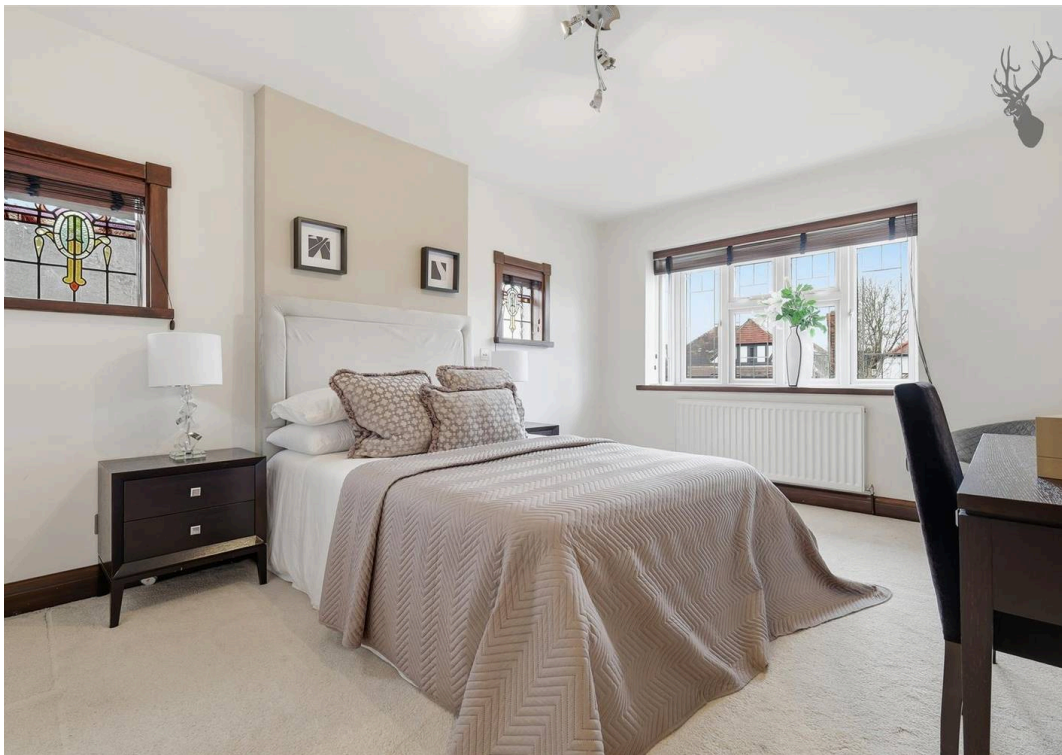
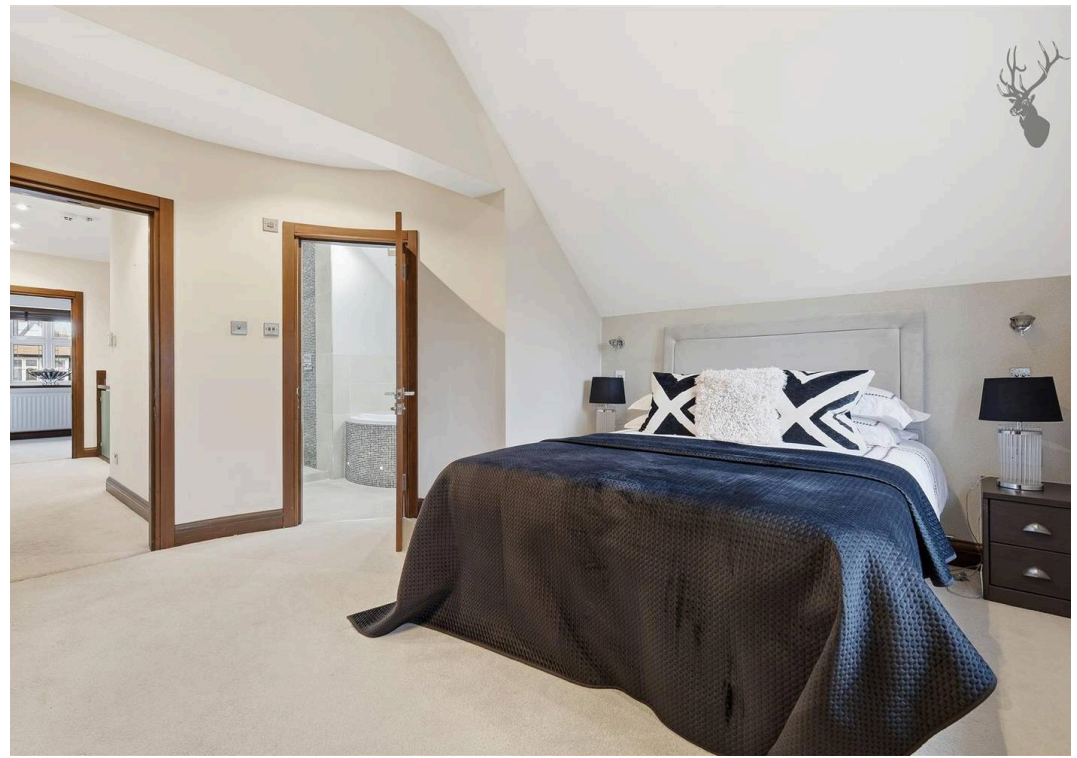
The ground floor welcomes you with a bright entrance hall leading to a cosy living room featuring a charming bay window, perfect for relaxing evenings. The heart of the home is the impressive open-plan kitchen, dining, and lounge area, designed for seamless entertaining and everyday family life. With sleek finishes, ample storage, and bi-fold doors opening onto the garden, this space exudes light and flow. Additional ground-floor features include a utility room, guest WC, boot room, and even a steam room, adding a touch of luxury and relaxation to the home.

Upstairs, the first floor offers four well-proportioned bedrooms, including a generous principal suite with its own en-suite shower room. A modern family bathroom and a convenient storage room complete this level, ensuring comfort and practicality for every member of the household.

Stylishly presented and thoughtfully arranged, this impressive home combines elegant living spaces with contemporary design touches throughout. Located within easy reach of excellent local schools, transport links, and green open spaces, The Glade represents an ideal choice for families seeking quality, comfort, and convenience in one of Woodford Green's most sought-after areas.

The Knighton Estate is a leafy, residential enclave known for its tree-lined avenues, welcoming community spirit, and proximity to excellent state and independent schools, making it a firm favourite among families. The area is served by the highly



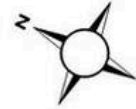




The Glade

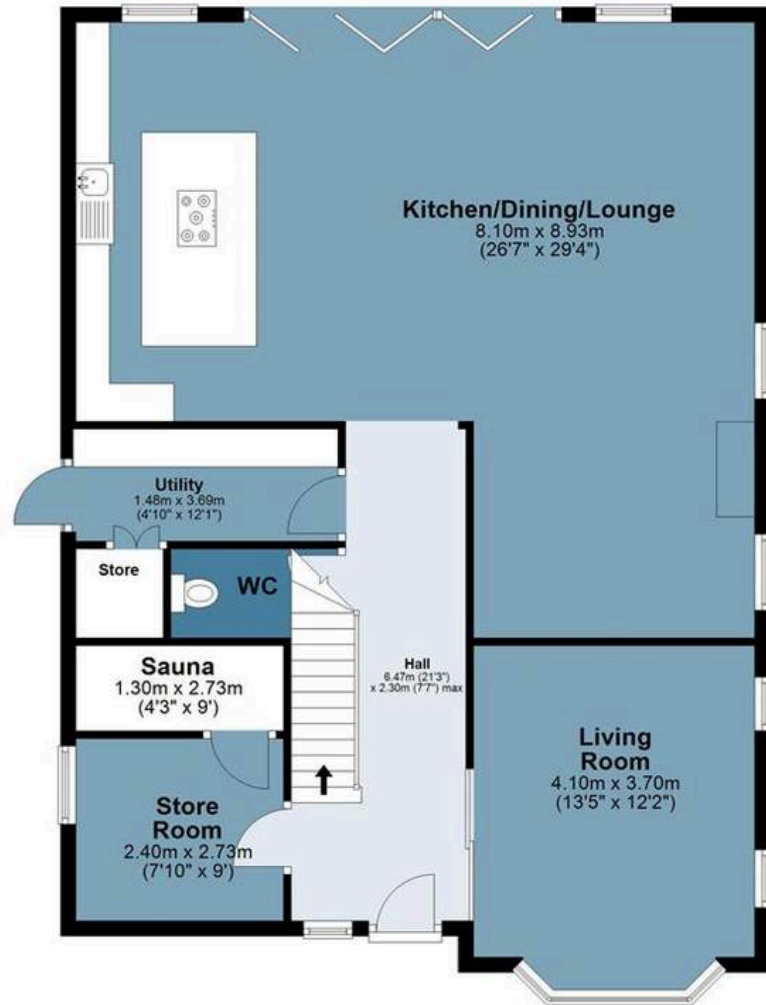
Approx. Gross Internal Area 178.8 Sq M (1924.4 Sq Ft)

BUTLER & STAG



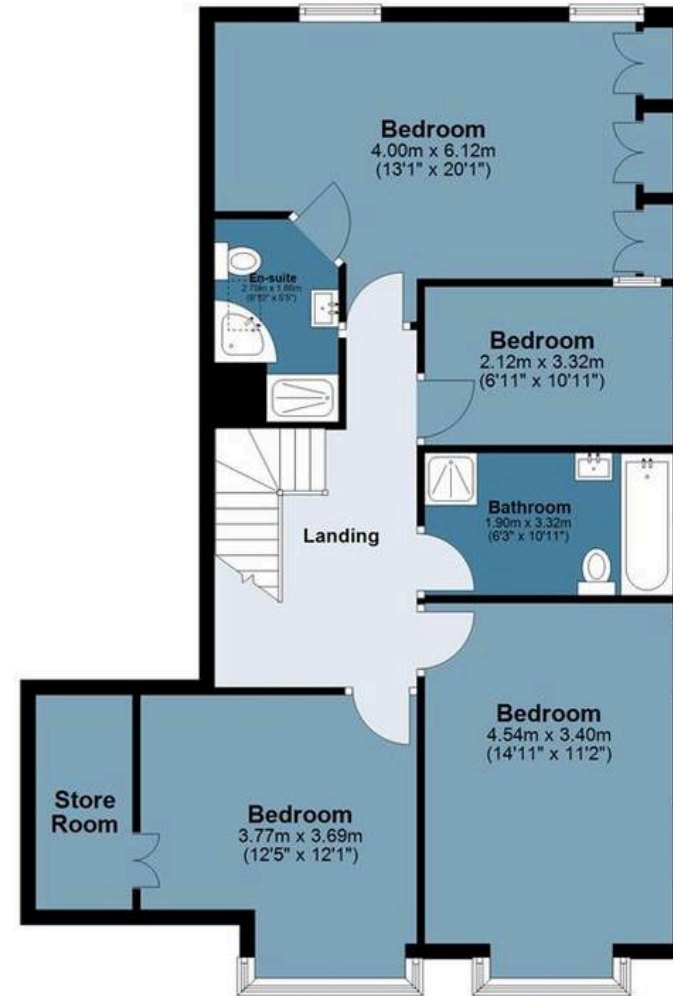
Ground Floor

Approx. 95.5 sq. metres (1028.0 sq. feet)



First Floor

Approx. 83.3 sq. metres (896.3 sq. feet)



Measurements are approximate and for illustration purposes only. While we do not doubt the accuracy and completeness, we advise you conduct a careful independent assessment of the property to determine monetary value.

FROM EAST LONDON ENERGY TO WEST ESSEX EASE

We Make Moving Home Easy.

At Butler and Stag, we do more than just connect London to West Essex – we make the move seamless. With offices spanning from vibrant East London to the tranquillity of West Essex, we understand the nuances of each area and the journey people take between them. Our marketing goes beyond standard listings, showcasing every property with precision, creativity, and reach that others simply can't match. Coupled with an unparalleled attention to detail, from first enquiry to final move-in, we ensure every client and customer feels informed, supported, and confident. Simply put, we do the little things that make a big difference, setting us apart in every step of the property experience.



LONDON STRATFORD SOUTH WOODFORD BUCKHURST HILL LOUGHTON EPPING BEYOND

Like what you see? Let's talk

Book your **FREE** valuation now



01992 667666

theydon@butlerandstag.com

4 Forest Drive, Theydon Bois, CM16 7EY

[butlerandstag.uk](https://www.butlerandstag.uk)

IMPORTANT NOTICE - These particulars have been prepared in good faith and they are not intended to constitute part of an offer or contract. We have not performed a structural survey on this property and the services, appliances and specific fittings have not been tested. All photographs, measurements, floor plans and distances referred to are given as a guide and should not be relied upon.

BUTLER & STAG

