



George Hudson Tower, Stratford, E15

Guide Price **£380,000**



George Hudson Tower, Stratford, E15

Guide Price - £380,000 To £400,000 A beautifully presented two-bedroom, two-bathroom apartment set on the 8th floor of a modern gated development on High Street, Stratford, offering contemporary living with exceptional convenience.

- Two Bathrooms
- Chain Free
- Two Double Bedrooms
- 24-Hour Concierge
- Private South-Facing Balcony
- Gated Secure Development
- Prime Location
- Lift Access To All Levels



The property boasts a bright and spacious open-plan living and dining area, seamlessly connected to a private south-facing balcony, flooding the space with natural light and providing far-reaching views—ideal for relaxing or entertaining. The modern fitted kitchen complements the living space, while both bedrooms are well-proportioned doubles, with the principal bedroom benefiting from an en-suite bathroom. A further stylish family bathroom completes the accommodation.

Residents benefit from a 24-hour concierge service, secure gated access, and well-maintained communal areas, offering both comfort and peace of mind. The apartment is offered chain-free, making it an ideal purchase for both homeowners and investors alike.

Perfectly positioned on Stratford High Street, the property enjoys excellent transport links, including Stratford Station, as well as close proximity to Westfield Stratford City, local amenities, and green spaces.

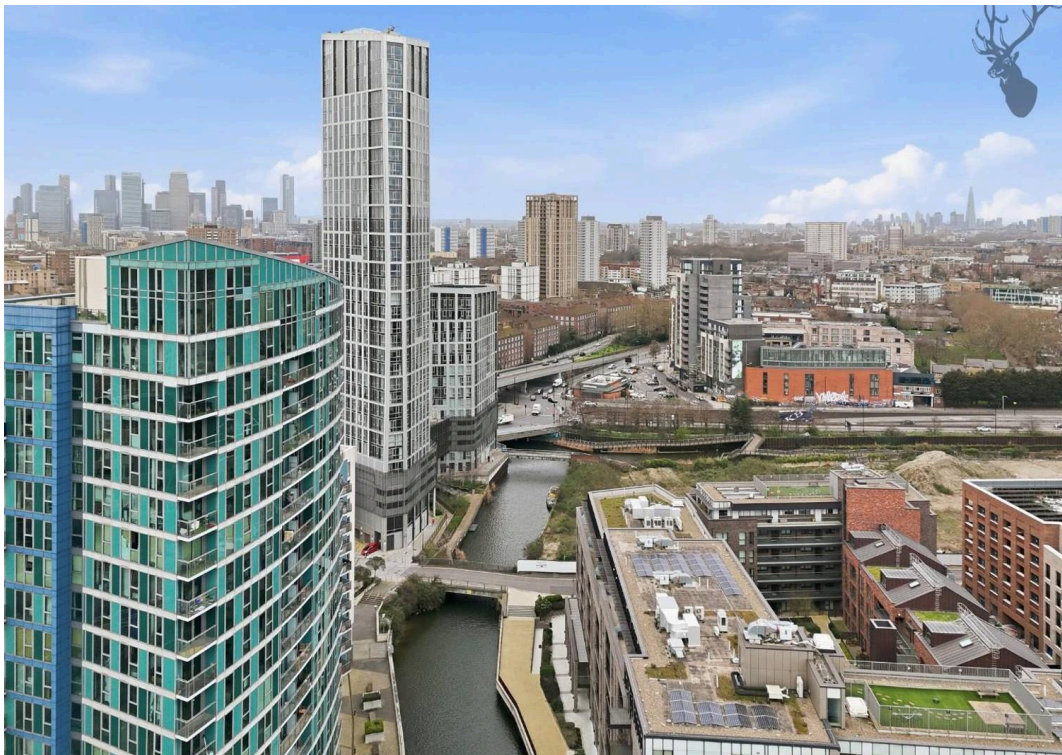
Council Tax band: D

Tenure: Leasehold

EPC Energy Efficiency Rating: B

EPC Environmental Impact Rating: B



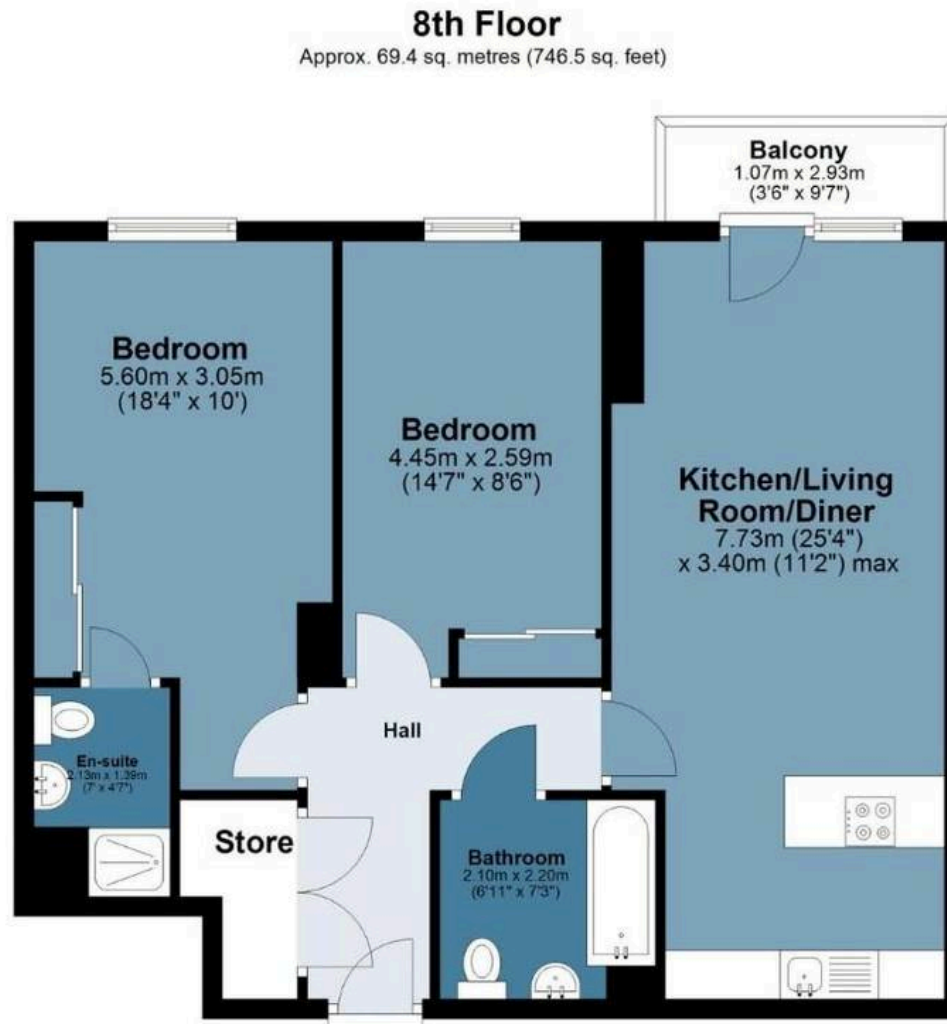




George Hudson Tower

Approx. Gross Internal Area 69.4 sq. metres (746.5 sq. feet)

BUTLER & STAG



Measurements are approximate and for illustration purposes only. While we do not doubt the accuracy and completeness, we advise you conduct a careful independent assessment of the property to determine monetary value

© @modephotouk www.modephoto.co.uk

FROM EAST LONDON ENERGY TO WEST ESSEX EASE

We Make Moving Home Easy.

At Butler and Stag, we do more than just connect London to West Essex – we make the move seamless. With offices spanning from vibrant East London to the tranquillity of West Essex, we understand the nuances of each area and the journey people take between them. Our marketing goes beyond standard listings, showcasing every property with precision, creativity, and reach that others simply can't match. Coupled with an unparalleled attention to detail, from first enquiry to final move-in, we ensure every client and customer feels informed, supported, and confident. Simply put, we do the little things that make a big difference, setting us apart in every step of the property experience.



LONDON STRATFORD SOUTH WOODFORD BUCKHURST HILL LOUGHTON EPPING BEYOND

Like what you see? Let's talk

Book your **FREE** valuation now



020 8102 1236

london@butlerandstag.com

508 Roman Road, Bow, London, E3 5LU

butlerandstag.uk

IMPORTANT NOTICE - These particulars have been prepared in good faith and they are not intended to constitute part of an offer or contract. We have not performed a structural survey on this property and the services, appliances and specific fittings have not been tested. All photographs, measurements, floor plans and distances referred to are given as a guide and should not be relied upon.

BUTLER & STAG

