





Denmark Place, Bow, E3

London

Guide Price £375,000 - £400,000 Set within the Fairfield Road Conservation area and positioned at the end of a cobbled east-end street is this first-floor, dual aspect, two-bedroom apartment.

- Resident Only Gardens To Enjoy
- South Facing Balcony
- Modern Interiors
- Chain Free
- Seperate Kitchen
- Two Bedrooms
- Bow Church DLR and Bow Road Tube Station A Moments Walk Away
- First Floor apartment



Situated on the first floor the property boasts modern interiors and has a south facing balcony.

Inside, the apartment comprises a spacious living room, a separate fully fitted kitchen, two well-proportioned bedrooms, and a modern bathroom. The separate kitchen provides practical cooking space with space for a separate dining table.

Both bedrooms offer good natural light and flexibility for use as sleeping accommodation, a home office, or guest room.

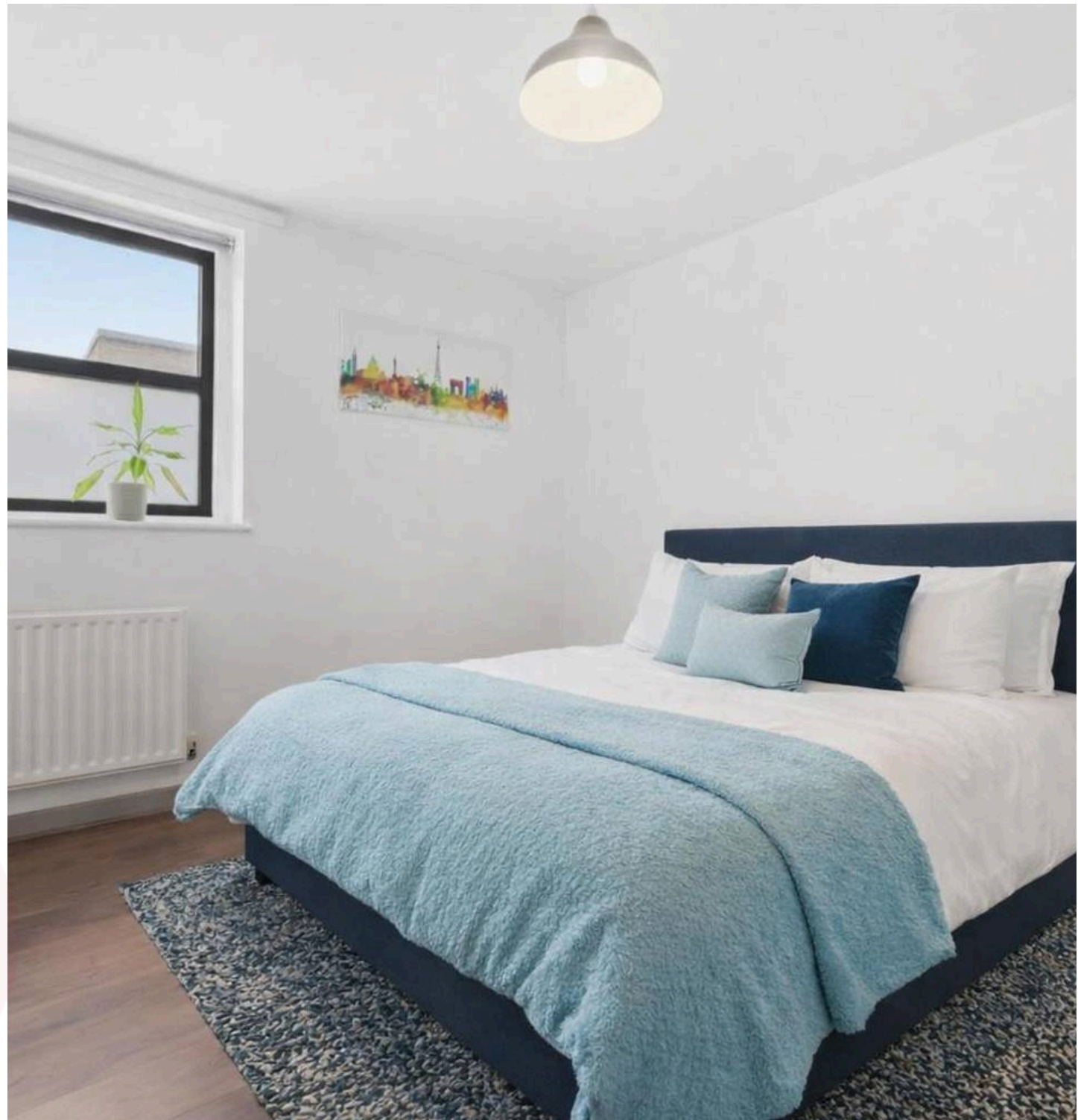
The development is enviably located in the heart of Bow having both Bow Road Underground, Bow Church DLR on its door step. Victoria Park, Westfield Shopping Centre and The Queen Elizabeth Olympic Park are all within easy reach.

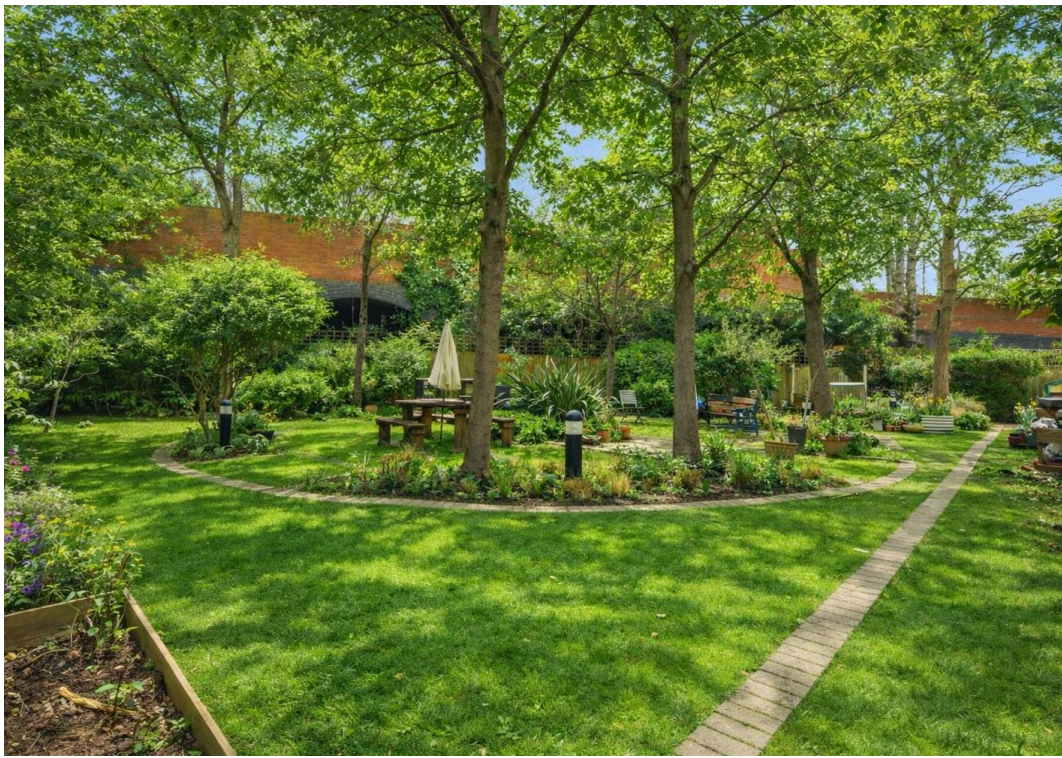
Council Tax band: D

Tenure: Leasehold

EPC Energy Efficiency Rating: C

EPC Environmental Impact Rating: B

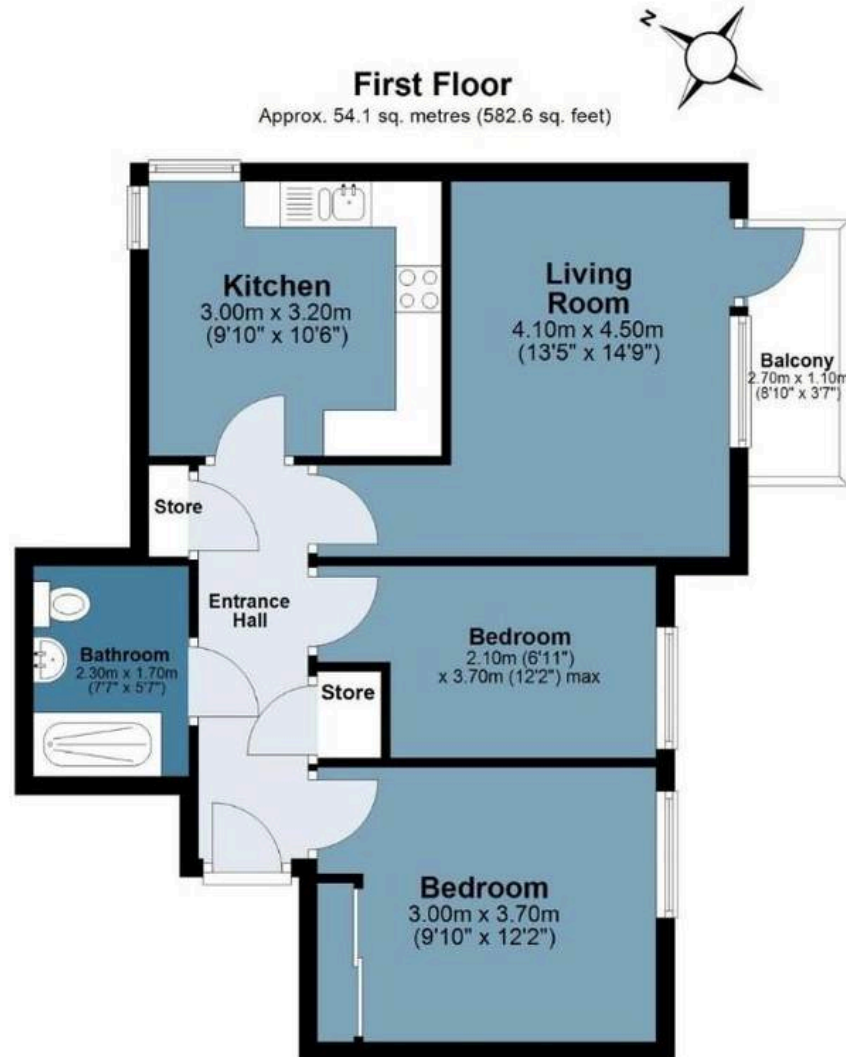






Denmark Place

Approx. Gross Internal Area 54.1 sq. metres (582.6 sq. feet)



Measurements are approximate and for illustration purposes only. While we do not doubt the accuracy and completeness, we advise you conduct a careful independent assessment of the property to determine monetary value

FROM EAST LONDON ENERGY TO WEST ESSEX EASE

We Make Moving Home Easy.

At Butler and Stag, we do more than just connect London to West Essex – we make the move seamless. With offices spanning from vibrant East London to the tranquillity of West Essex, we understand the nuances of each area and the journey people take between them. Our marketing goes beyond standard listings, showcasing every property with precision, creativity, and reach that others simply can't match. Coupled with an unparalleled attention to detail, from first enquiry to final move-in, we ensure every client and customer feels informed, supported, and confident. Simply put, we do the little things that make a big difference, setting us apart in every step of the property experience.



LONDON STRATFORD SOUTH WOODFORD BUCKHURST HILL LOUGHTON EPPING BEYOND

Like what you see? Let's talk

Book your **FREE** valuation now



020 8102 1236

london@butlerandstag.com

508 Roman Road, Bow, London, E3 5LU

butlerandstag.uk

IMPORTANT NOTICE - These particulars have been prepared in good faith and they are not intended to constitute part of an offer or contract. We have not performed a structural survey on this property and the services, appliances and specific fittings have not been tested. All photographs, measurements, floor plans and distances referred to are given as a guide and should not be relied upon.

BUTLER & STAG

