



O'brien House, Bethnal Green, E2
London

£375,000



O'Brien House, Bethnal Green, E2

London

Guide Price £375,000 - £400,000 This well-presented second-floor apartment offers approximately 685 Sq/Ft of comfortable living space, ideally positioned in the heart of Bethnal Green. Set within O'Brien House, the property is perfect for first-time buyers, investors, or those seeking a conveniently located London home.

- Well-Appointed Kitchen
- Excellent Transport Connections
- Chain Free
- Bright Reception Room
- Two Spacious Bedrooms
- Second-Floor Apartment
- 685 Sq/Ft Internal Living Space
- Close To Victoria Park and Mile End Park



The apartment features two generously sized bedrooms, a bright and airy reception room, and a well-proportioned kitchen designed for both practicality and everyday living. Large windows throughout allow for an abundance of natural light, enhancing the sense of space.

Offered chain free, this property ensures a smooth and hassle-free purchasing process.

Perfectly situated, the apartment is just a short distance from the green open spaces of Victoria Park and Mile End Park, offering excellent opportunities for leisure, exercise, and relaxation. The location also benefits from superb transport links, making commuting into the City and beyond quick and convenient.

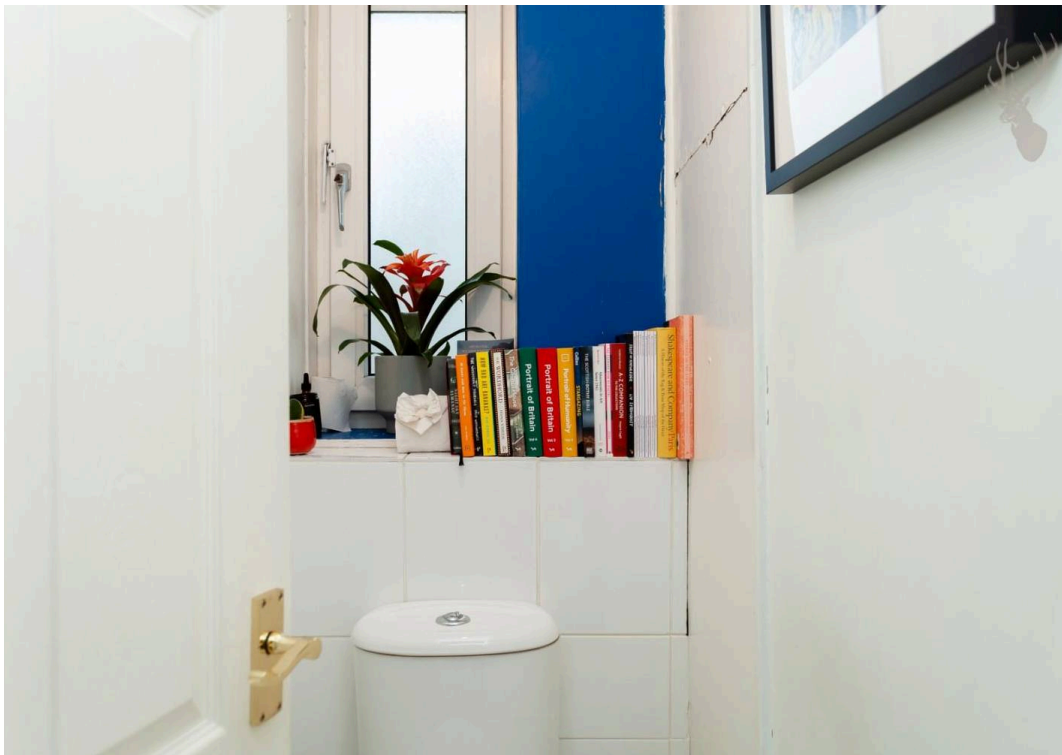
Council Tax band: C

Tenure: Leasehold

EPC Energy Efficiency Rating: C

EPC Environmental Impact Rating: C

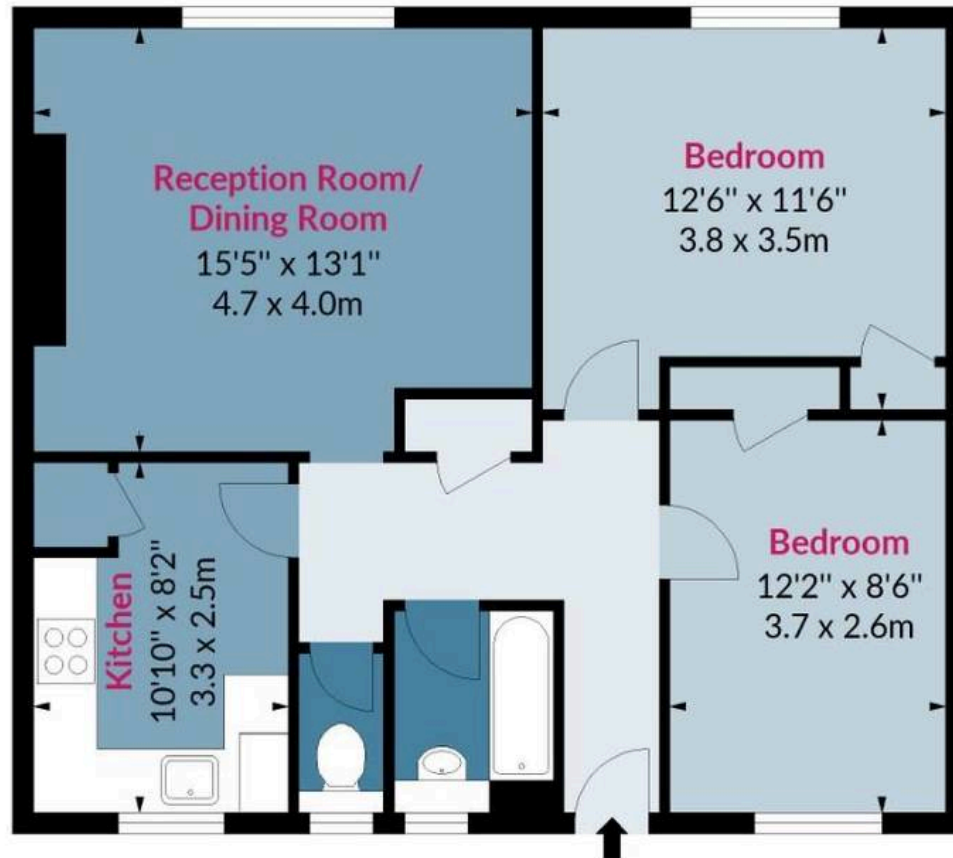






O'brien House, Roman Road, E2

Approx. Gross Internal Area 685 Sq Ft - 63.64 Sq M



Second Floor

Floor Area 685 Sq Ft - 63.64 Sq M



Measured according to RICS IPMS2. Floor plan is for illustrative purposes only and is not to scale. Every attempt has been made to ensure the accuracy of the floor plan shown, however all measurements, fixtures, fittings and data shown are an approximate interpretation for illustrative purposes only. 1 sq m = 10.76 sq feet.

lpaplus.com

Date: 16/11/2022

FROM EAST LONDON ENERGY TO WEST ESSEX EASE

We Make Moving Home Easy.

At Butler and Stag, we do more than just connect London to West Essex – we make the move seamless. With offices spanning from vibrant East London to the tranquillity of West Essex, we understand the nuances of each area and the journey people take between them. Our marketing goes beyond standard listings, showcasing every property with precision, creativity, and reach that others simply can't match. Coupled with an unparalleled attention to detail, from first enquiry to final move-in, we ensure every client and customer feels informed, supported, and confident. Simply put, we do the little things that make a big difference, setting us apart in every step of the property experience.



LONDON STRATFORD SOUTH WOODFORD BUCKHURST HILL LOUGHTON EPPING BEYOND

Like what you see? Let's talk

Book your **FREE** valuation now



020 8102 1236

london@butlerandstag.com

508 Roman Road, Bow, London, E3 5LU

butlerandstag.uk

IMPORTANT NOTICE - These particulars have been prepared in good faith and they are not intended to constitute part of an offer or contract. We have not performed a structural survey on this property and the services, appliances and specific fittings have not been tested. All photographs, measurements, floor plans and distances referred to are given as a guide and should not be relied upon.

BUTLER & STAG

