

BUTLER



Link House, Bow, E3
London

£475,000



Link House, Bow, E3

London

Price Guide £475,000 - £500,000 Nestled between the historic Bow Church and the leafy open spaces of Grove Hall Park, this charming early 20th-century two-bedroom, two bathroom residence offers 954 Sq/Ft of well-proportioned accommodation.

- Two Bedrooms
- Grove Hall Park / Westfield Shopping Centre Close By
- 954 Sq/Ft Internal Living Space
- Lift Access To All Levels
- Bow Church (DLR) / Bow Road and Mile End Tube Station Close By
- Two Bathrooms
- Voluminous Ceiling Heights
- Open Plan Concept Living Space



Boasting tall ceilings throughout, the apartment feels bright and airy, enhancing the sense of volume across all rooms. The heart of the home is the impressive open-plan living and kitchen area, designed for entertaining, with generous proportions and an abundance of natural light.

The property features two well-sized double bedrooms, including a spacious principal bedroom with its own en-suite bathroom, alongside a second contemporary family bathroom. Thoughtfully laid out, the apartment provides both comfort and functionality, ideal for professionals or couples.

Located in a well-maintained development on Bow Road, Link House benefits from excellent transport connections, with nearby Underground and bus links providing easy access into the City, Canary Wharf, and beyond. A range of local amenities, green spaces, and vibrant East London hotspots are all within easy reach.

This is a fantastic opportunity to acquire a stylish and generously proportioned home in a highly convenient and well-connected location.

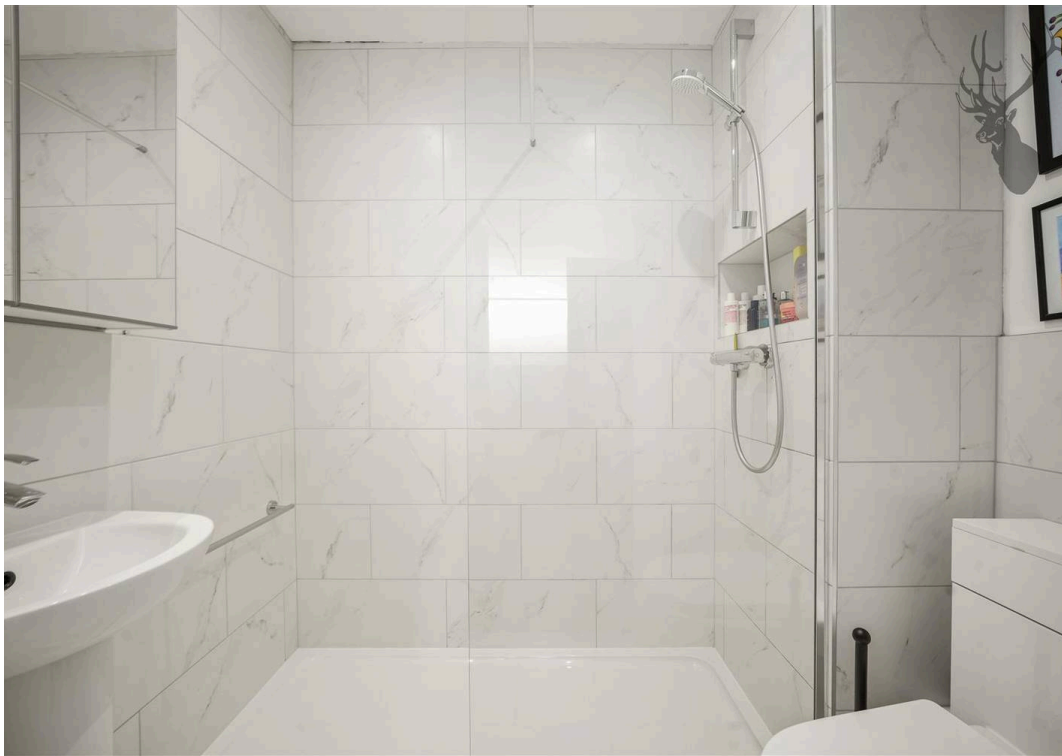
Council Tax band: D

Tenure: Leasehold

EPC Energy Efficiency Rating: C

EPC Environmental Impact Rating: C

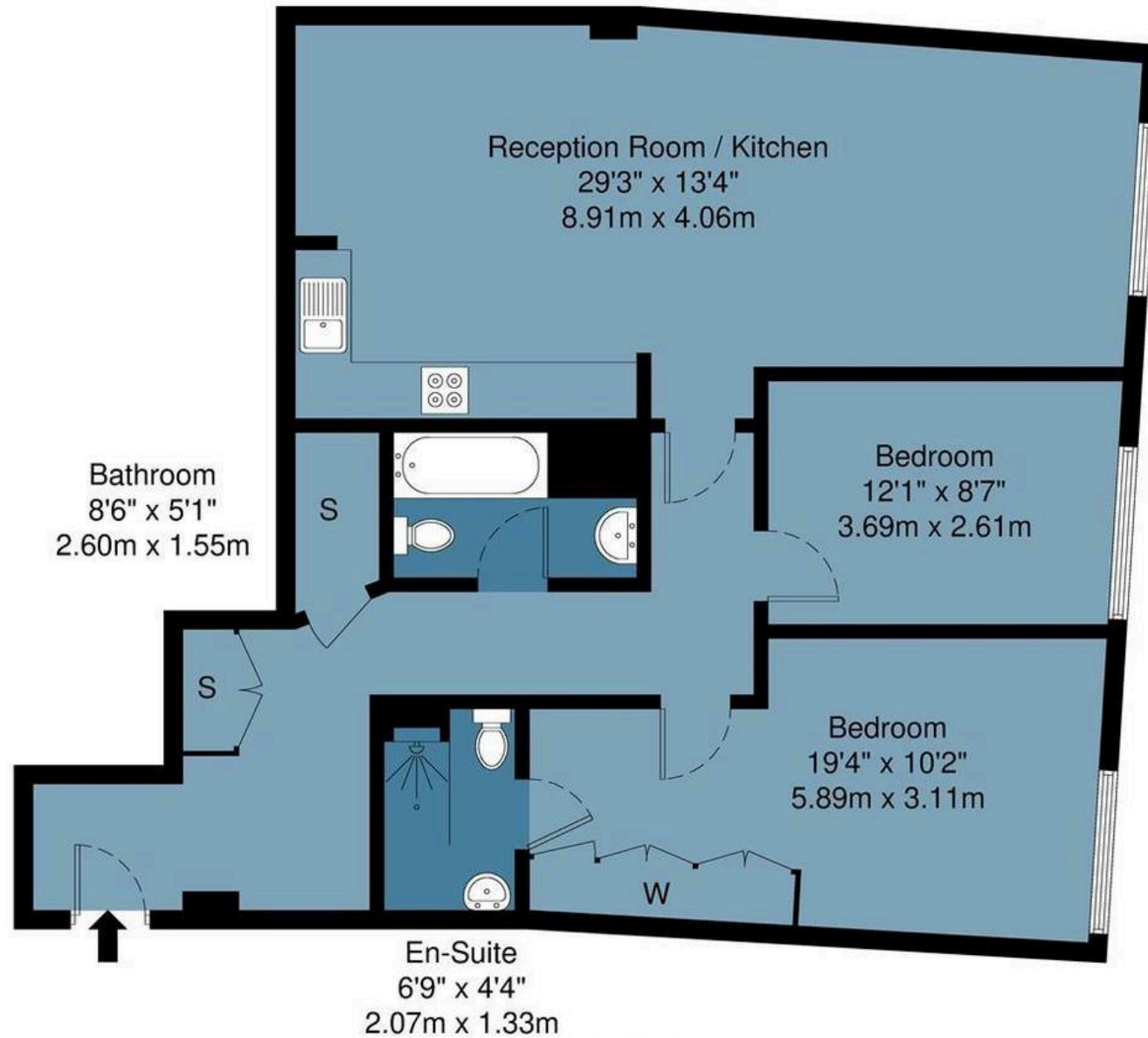






Link House, E3

Approx Gross Internal Area : 88.7 sq m / 954 sq ft



Second Floor

FROM EAST LONDON ENERGY TO WEST ESSEX EASE

We Make Moving Home Easy.

At Butler and Stag, we do more than just connect London to West Essex – we make the move seamless. With offices spanning from vibrant East London to the tranquillity of West Essex, we understand the nuances of each area and the journey people take between them. Our marketing goes beyond standard listings, showcasing every property with precision, creativity, and reach that others simply can't match. Coupled with an unparalleled attention to detail, from first enquiry to final move-in, we ensure every client and customer feels informed, supported, and confident. Simply put, we do the little things that make a big difference, setting us apart in every step of the property experience.



LONDON STRATFORD SOUTH WOODFORD BUCKHURST HILL LOUGHTON EPPING BEYOND

Like what you see? Let's talk

Book your **FREE** valuation now



020 8102 1236

london@butlerandstag.com

508 Roman Road, Bow, London, E3 5LU

butlerandstag.uk

IMPORTANT NOTICE - These particulars have been prepared in good faith and they are not intended to constitute part of an offer or contract. We have not performed a structural survey on this property and the services, appliances and specific fittings have not been tested. All photographs, measurements, floor plans and distances referred to are given as a guide and should not be relied upon.

BUTLER & STAG

