

BUTLER & STAG

Kira Building, Bow, E3
London

Guide Price £450,000

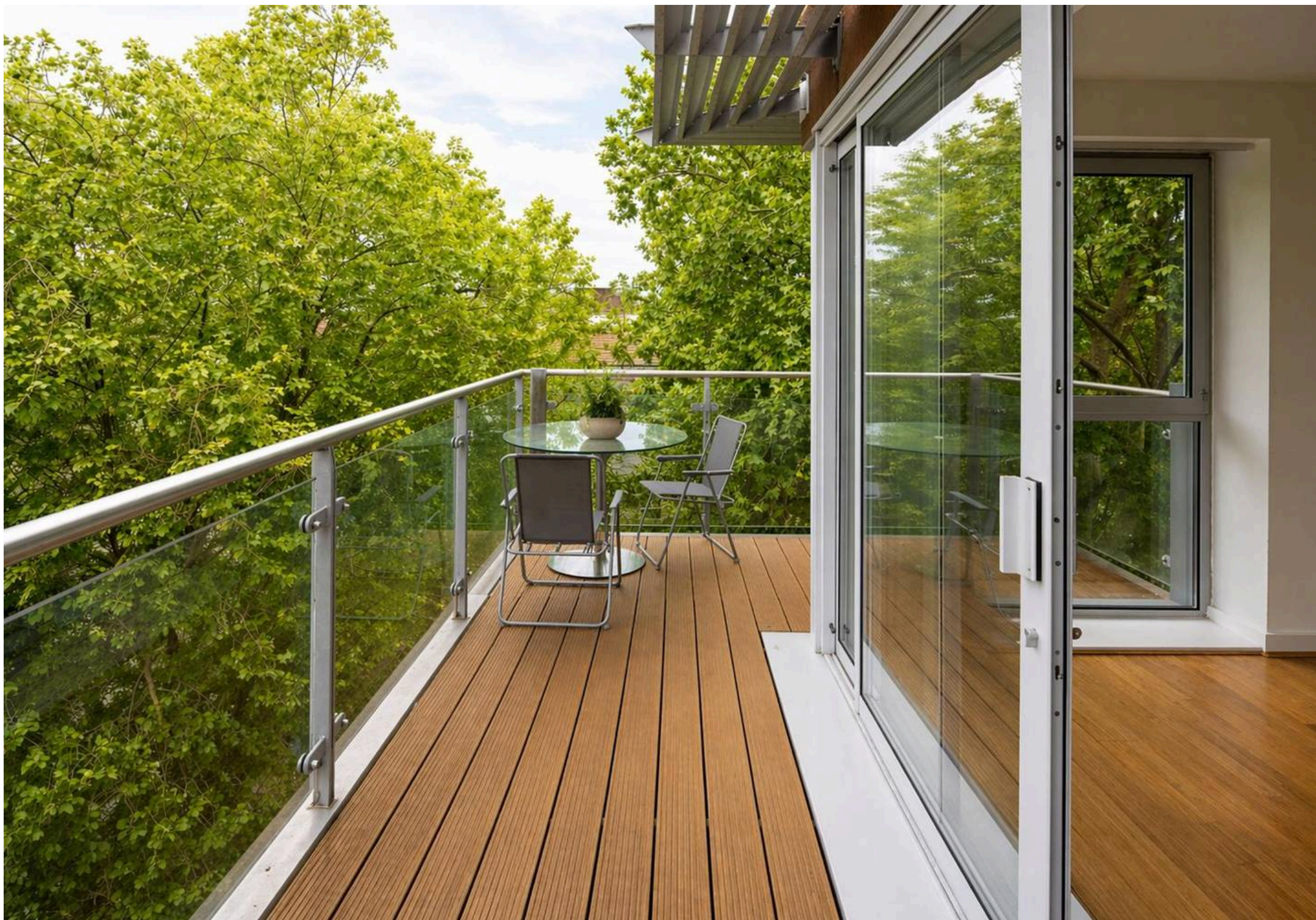


Kira Building, Bow, E3

London

Set on the top floor of the sought-after Kira Building in Bow, this beautifully presented dual-aspect two bedroom, two bathroom apartment offers an unparalleled vantage point of London's iconic skyline providing breath-taking views.

- Bicycle Storage
- Open Plan Concept Living
- Top Floor Dual Aspect Apartment
- Lift Service To All Levels
- Two Bedrooms
- 180 Degree Balcony
- Two Bathrooms
- Chain Free
- 691 Sq/Ft Internal Living Space
- Bow Road and Mile End Tube Stations A Moments Walk Away



The property comprises two well-proportioned double bedrooms and two modern bathrooms, including a principal bedroom with en-suite. The heart of the home is a spacious open-plan kitchen and reception area, designed to maximise both light and functionality, with large windows on multiple aspects flooding the space with natural light throughout the day.

Positioned on the top floor, the apartment enjoys an elevated outlook and enhanced privacy, while the dual-aspect layout creates a wonderful sense of openness rarely found in similar properties.

Further benefits include a private 180 degree balcony, ample storage, and access to a lift within this well-maintained development.

Kira Building is ideally located for excellent transport links, with Bow Road and Mile End stations within easy reach, providing swift access to the City, Canary Wharf and beyond. Residents also benefit from close proximity to local amenities, green spaces, and the vibrant lifestyle offerings of East London.

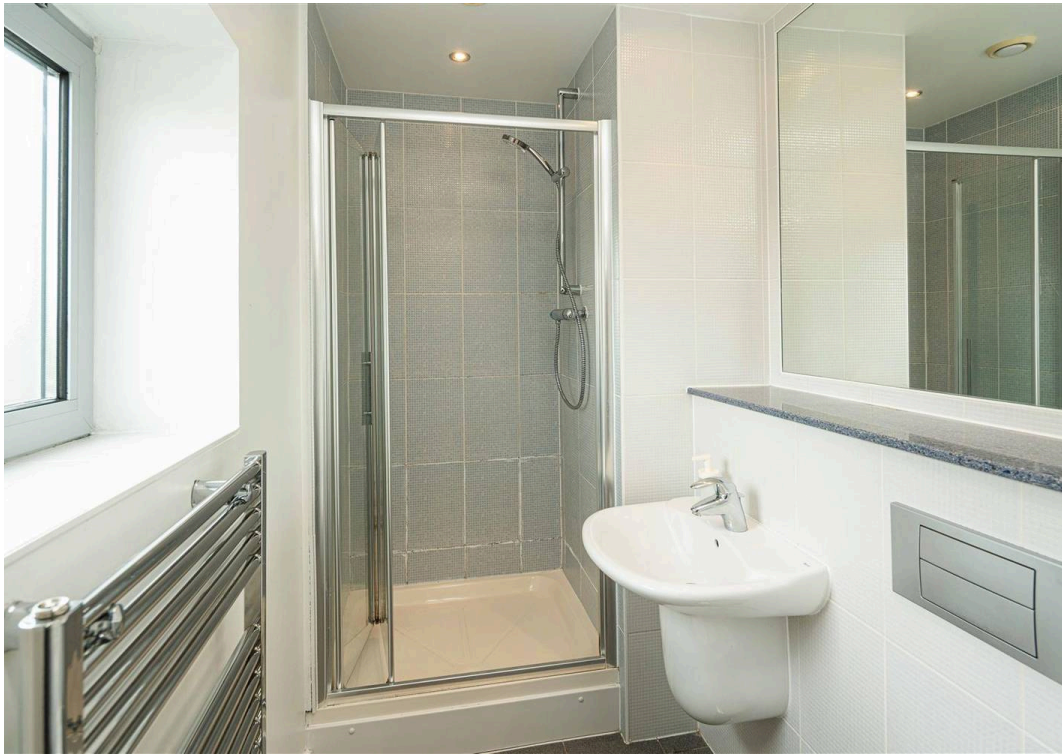
Council Tax band: D

Tenure: Leasehold

EPC Energy Efficiency Rating: D

EPC Environmental Impact Rating: D







Kira Building

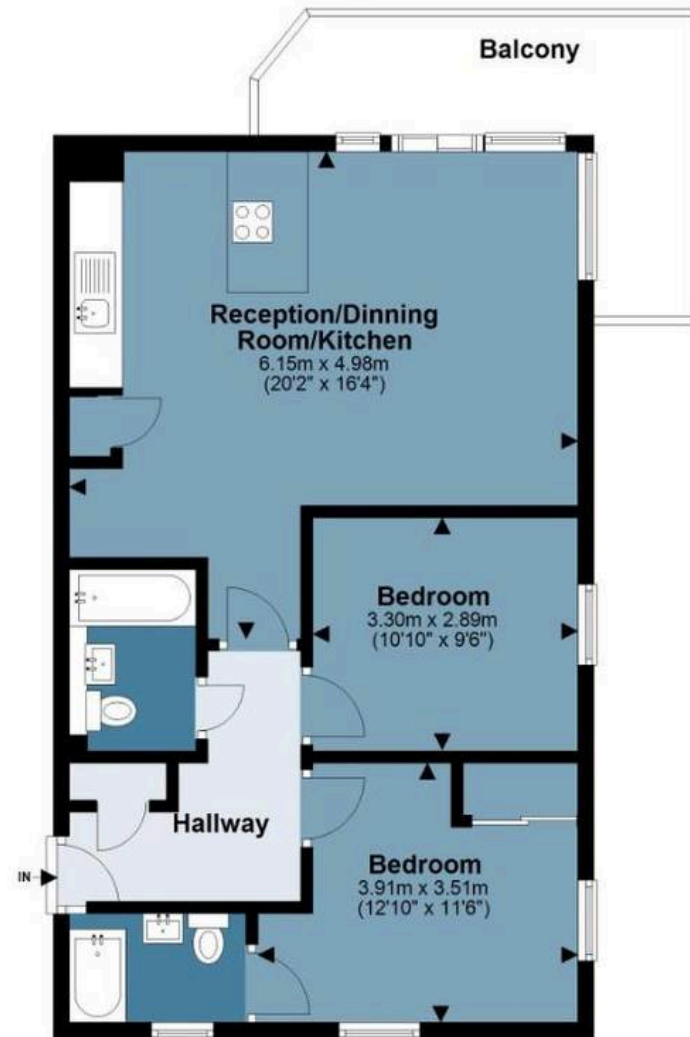
Approx. Gross Internal Area 64.6 Sq M (695.1 Sq Ft)

BUTLER & STAG



Top Floor

Approx. 64.6 sq. metres (695.1 sq. feet)
(excluding WC, Balcony)



Measurements are approximate and for illustration purposes only. While we do not doubt the accuracy and completeness, we advise you conduct a careful independent assessment of the property to determine monetary value.

© @modephotouk www.modephoto.co.uk

FROM EAST LONDON ENERGY TO WEST ESSEX EASE

We Make Moving Home Easy.

At Butler and Stag, we do more than just connect London to West Essex – we make the move seamless. With offices spanning from vibrant East London to the tranquillity of West Essex, we understand the nuances of each area and the journey people take between them. Our marketing goes beyond standard listings, showcasing every property with precision, creativity, and reach that others simply can't match. Coupled with an unparalleled attention to detail, from first enquiry to final move-in, we ensure every client and customer feels informed, supported, and confident. Simply put, we do the little things that make a big difference, setting us apart in every step of the property experience.



LONDON STRATFORD SOUTH WOODFORD BUCKHURST HILL LOUGHTON EPPING BEYOND

Like what you see? Let's talk

Book your **FREE** valuation now



020 8102 1236

london@butlerandstag.com

508 Roman Road, Bow, London, E3 5LU

butlerandstag.uk

IMPORTANT NOTICE - These particulars have been prepared in good faith and they are not intended to constitute part of an offer or contract. We have not performed a structural survey on this property and the services, appliances and specific fittings have not been tested. All photographs, measurements, floor plans and distances referred to are given as a guide and should not be relied upon.

BUTLER & STAG

