




Holdens
ESTATE AGENTS

12 Malvern Close, Lostock Hall

Offers Over £149,950


Holdens
ESTATE AGENTS



12 Malvern Close

Lostock Hall, Preston

Council Tax band: B

Tenure: Freehold

EPC Energy Efficiency Rating: C

EPC Environmental Impact Rating:

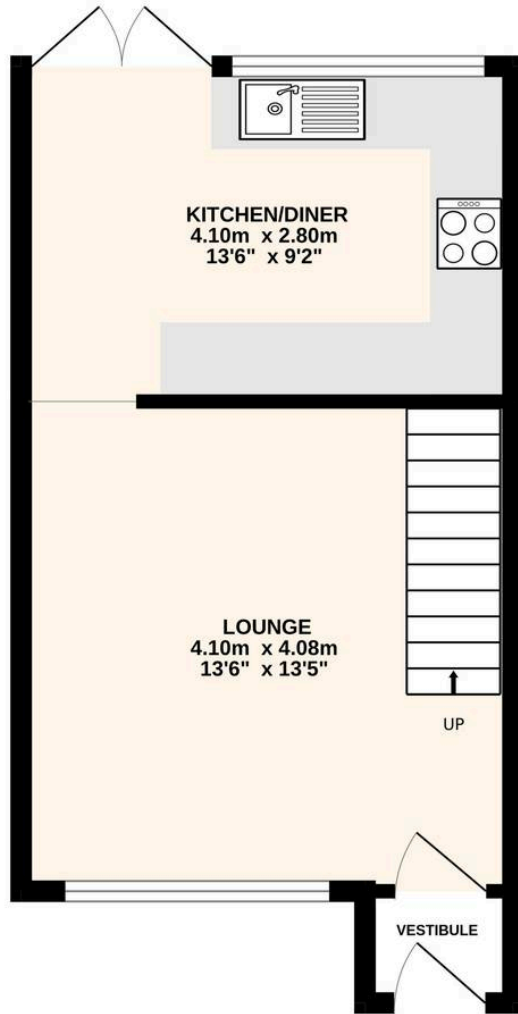
- Cul-de-Sac Location
- Terraced House
- Two Bedrooms
- Lounge, Modern Dining Kitchen
- Modern Bathroom
- Private Rear Garden
- Two Allocated Parking Spaces
- Popular Location
- Ideal First Time Buy or Someone Looking to Downsize



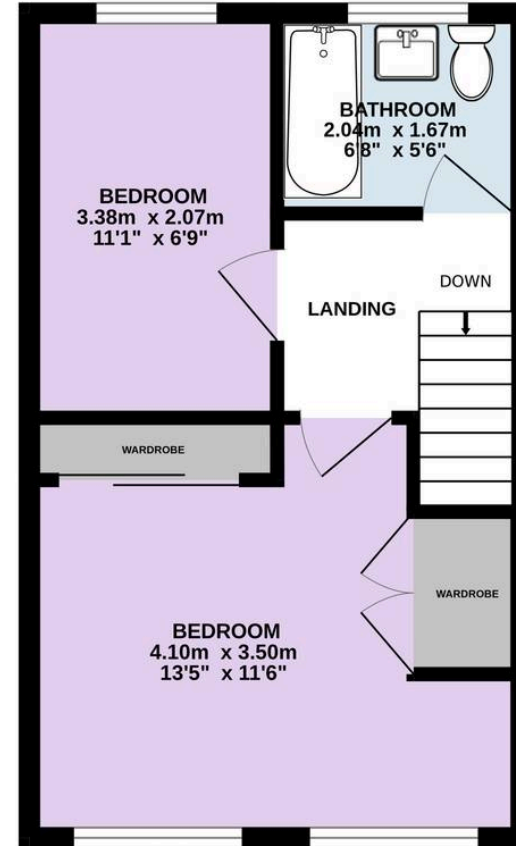




GROUND FLOOR
29.4 sq.m. (316 sq.ft.) approx.



1ST FLOOR
28.2 sq.m. (304 sq.ft.) approx.



TOTAL FLOOR AREA : 57.6 sq.m. (620 sq.ft.) approx.

Every attempt is made to ensure accuracy, however all measurements are approximate. This plan is for illustrative purposes only and is not to scale.
Made with Metropix ©2026



Holdens Lostock Hall

Holdens Estate Agents, 6 Watkin Lane - PR5 5RD

01772 698888

lostockhall@holdens.co.uk

www.holdens.co.uk/

Disclaimer: All information such as plans, dimensions, and details about the property's condition or suitability is provided in good faith and believed to be accurate, but should not be relied upon without independent verification. Buyers or tenants must carry out their own checks. Appliances and systems haven't been tested. It's strongly advised to get professional inspections before making any commitments. No employee or agent of Holdens Estate Agents is authorised to make promises or guarantees about the property. These details are for general guidance only and do not form part of any contract. All discussions with Holdens Estate Agents are subject to contract.