



13 Eskdale, Gatley  
Cheadle

£340,000

**GASCOIGNE  
HALMAN**

THE AREA'S LEADING ESTATE AGENCY



# 13 Eskdale

Gatley, Cheadle

Situated on a quiet and highly sought-after residential road, this property offers well-proportioned accommodation ideal for families and professionals alike. Located in the heart of Gatley, the home benefits from excellent access to local amenities, reputable schools, transport links, and Gatley Village.

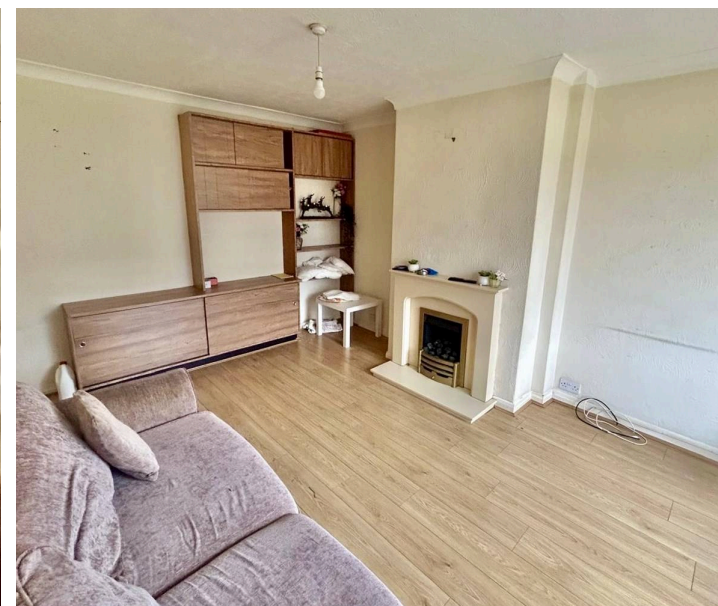
Council Tax band: C

Tenure: Freehold

EPC Energy Efficiency Rating: C

EPC Environmental Impact Rating: D

- Popular Residential Area
- Private Enclosed Rear Garden
- Quiet Cul-De-Sac Location
- Refitted Bathroom
- Two Reception Rooms
- Off-Road Parking And Garage
- Three Bedroom Semi-Detached Property



## 13 Eskdale

Gatley, Cheadle

The property features well-proportioned living areas, a well-appointed kitchen, comfortable bedrooms, and a private rear garden, providing a perfect balance of practicality and comfort. Off-road parking and a pleasant frontage further enhance its appeal.

An excellent opportunity to acquire a well-located home in one of Gatley's most desirable neighbourhoods. Early viewing is highly recommended.



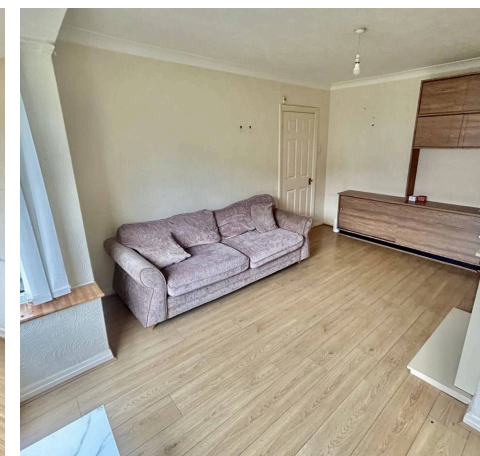
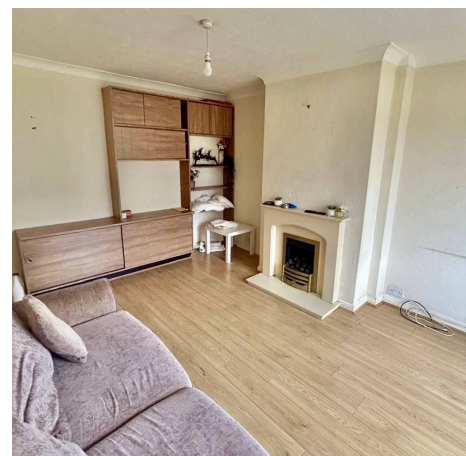
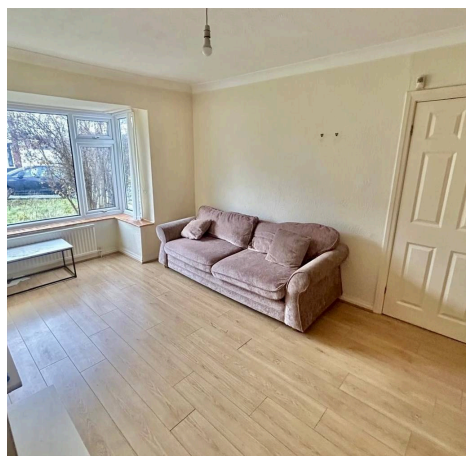


## 13 Eskdale

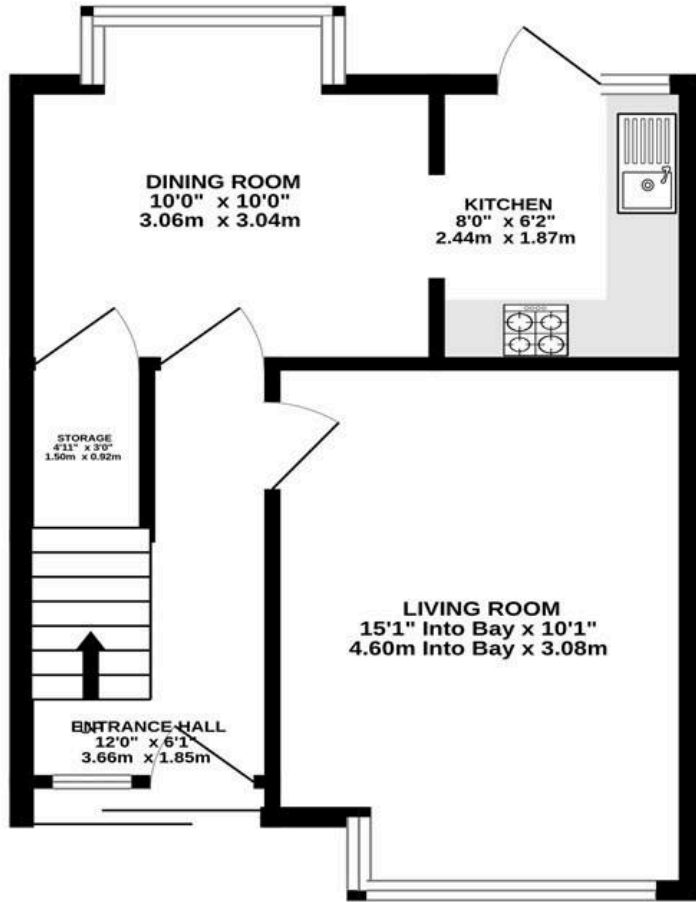
Gatley, Cheadle

The property features well-proportioned living areas, a well-appointed kitchen, comfortable bedrooms, and a private rear garden, providing a perfect balance of practicality and comfort. Off-road parking and a pleasant frontage further enhance its appeal.

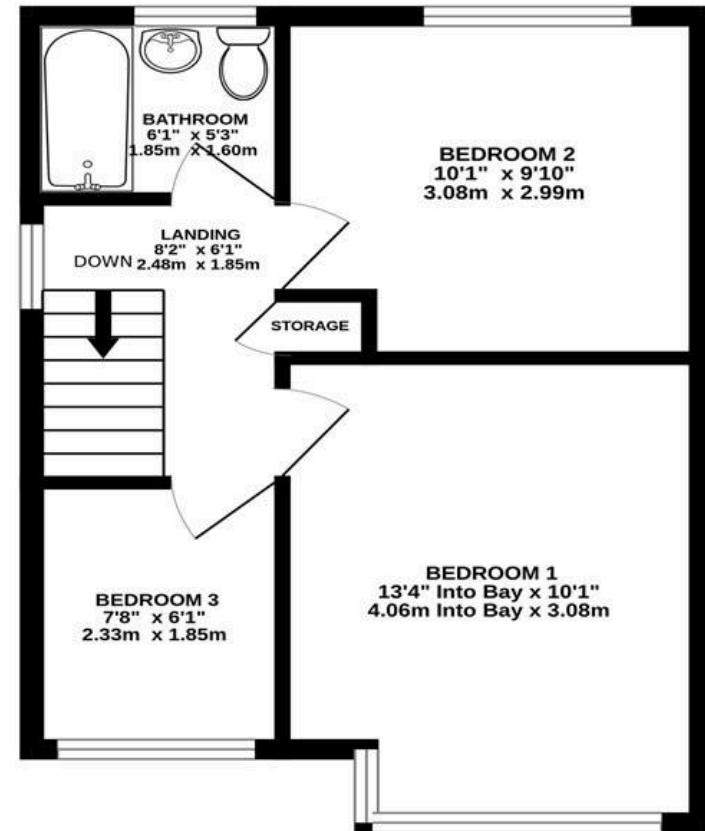
An excellent opportunity to acquire a well-located home in one of Gatley's most desirable neighbourhoods. Early viewing is highly recommended.



**GROUND FLOOR**  
368 sq.ft. (34.2 sq.m.) approx.



**1ST FLOOR**  
357 sq.ft. (33.2 sq.m.) approx.



TOTAL FLOOR AREA : 725 sq.ft. (67.4 sq.m.) approx.  
Measurements are approximate. Not to scale. Illustrative purposes only  
Made with Metropix ©2025

You can include any text here. The text can be modified upon generating your brochure.



THE AREA'S LEADING ESTATE AGENCY