



17 Hopkin Court Mapperley Plains, Nottingham – NG3 5SS

Guide Price **£270,000**





17 Hopkin Court Mapperley Plains

Nottingham

NO CHAIN! Modern end-townhouse near Mapperley's amenities & the stunning Gedling Country Park! Cosy lounge, dining kitchen, 3 beds, en-suite & bathroom with south-easterly facing garden & driveway!

Council Tax band: C

Tenure: Freehold

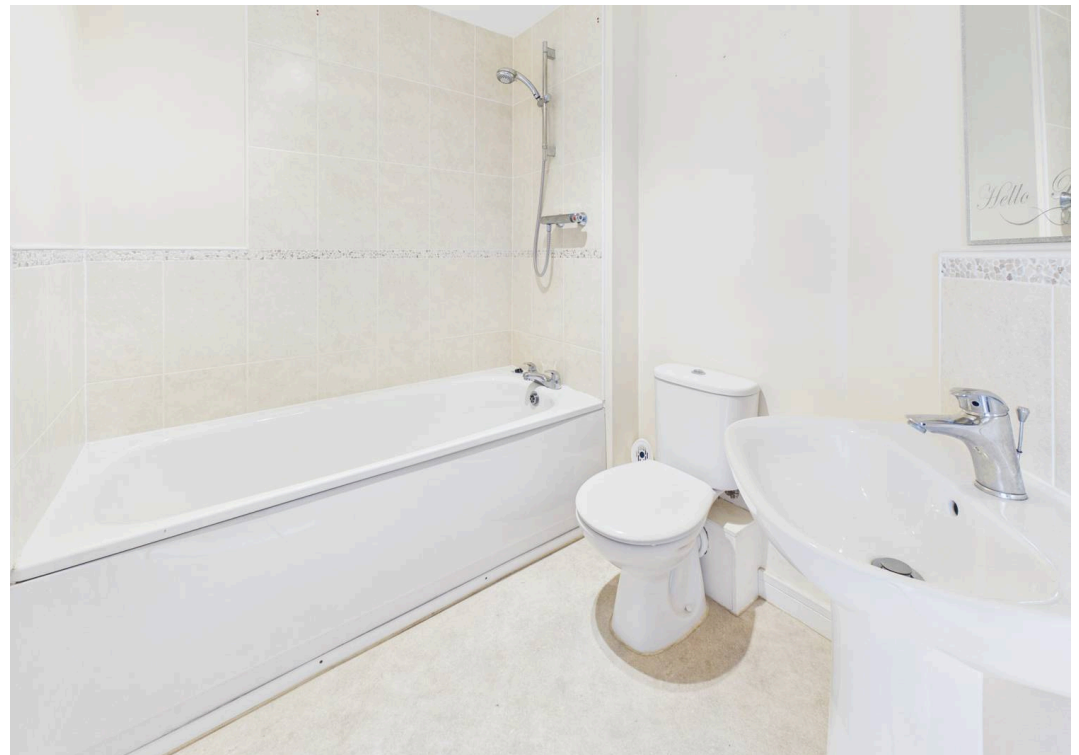
EPC Energy Efficiency Rating: C

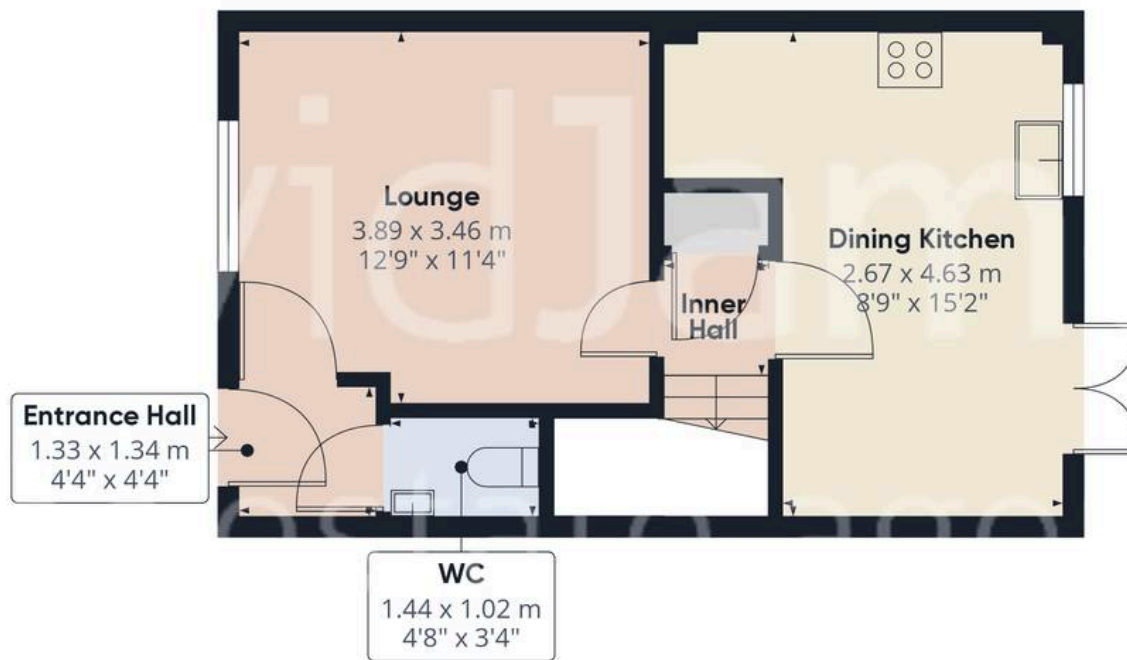
EPC Environmental Impact Rating:

- Modern end terrace house
- Offered to the market with no upward chain
- Within easy reach of Mapperley's nearby amenities and the stunning Gedling Country Park
- Welcoming entrance hallway with downstairs cloakroom/WC
- Cosy lounge with large front aspect window
- Dining kitchen with feature French doors overlooking the rear garden
- Three first floor bedrooms (main bedroom with en-suite shower room)
- Three-piece modern white bathroom suite with shower over bath
- South-easterly facing rear garden with patio and lawn
- Driveway and carport providing ample off-street parking

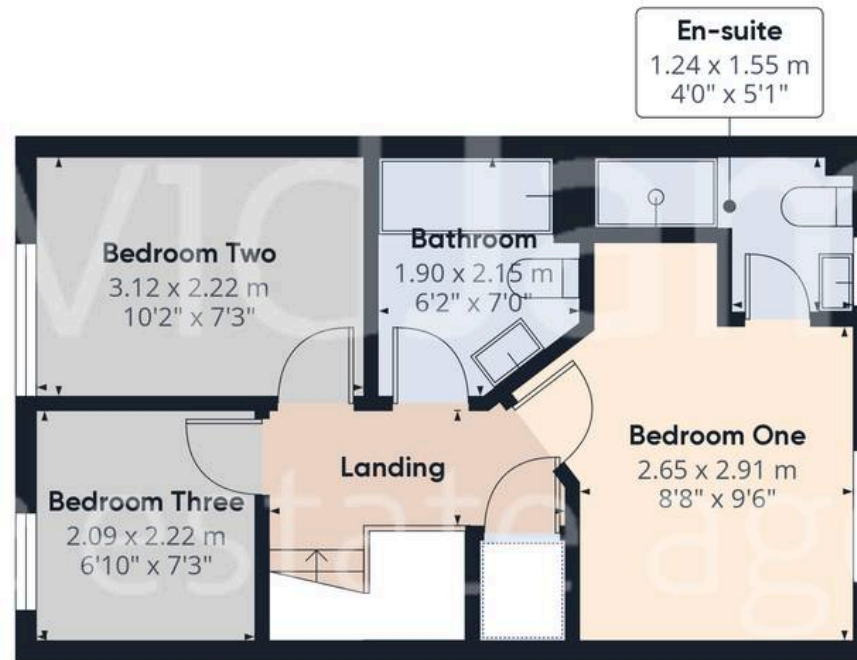








Floor 0



Floor 1

Approximate total area⁽¹⁾
64.78 m²
697.29 ft²

(1) Excluding balconies and terraces

While every attempt has been made to ensure accuracy, all measurements are approximate, not to scale. This floor plan is for illustrative purposes only.

Calculations were based on RICS IPMS 3C standard. Please note that calculations were adjusted by a third party and therefore may not comply with RICS IPMS 3C.

GIRAFFE360



David James Estate Agents

David James Estate Agents, 45B Plains Road – NG3 5JU

0115 962 4213 • mapperley@david-james.com • www.david-james.com

These particulars are produced in good faith and are set out as a general guide only. Measurements are approximate and floor plans are for illustrative purposes only. Services have not been tested. We have established professional relationships with third-party suppliers for the provision of services to Clients, details of which can be found on the property listing page on our website.