



**6 Cornwall Road, Bristol**  
**£800,000**

# 6 Cornwall Road

Bristol

- An elegant bay fronted period home located on one of Bishopston's most popular roads
- No onward chain
- Four bedrooms
- Two reception rooms
- Separate utility and downstairs W/C
- Main bedroom with en-suite
- Period features throughout
- Private landscaped garden with rear access

Located on a popular tree-lined road in Bishopston, this elegant bay fronted Victorian family home has an abundance of period charm and includes four bedrooms, three bathrooms including a master bedroom with en-suite, two receptions, a smartly finished kitchen, downstairs utility room and W/C, separate office and music room, and a private landscaped garden with secure rear access. The property further benefits from double glazed windows throughout and is offered to the market with no onward chain.

Accommodation on the ground floor comprises main vestibule entrance with original stained glass top-light that leads into a central hallway, complete with original stripped wood floor and useful storage area incorporated underneath the staircase.

At the front of the property, the living room has a bay window with double glazed uPVC sashes, cornice, ceiling rose, picture rail and a working cast-iron fireplace with period surround. Next door, the light and bright second reception room also includes a stripped wood floor, an original period dresser and another cast-iron fireplace. A set of timber framed doors lead into a recent extension



You can include any text here. The text can be modified upon generating your brochure.

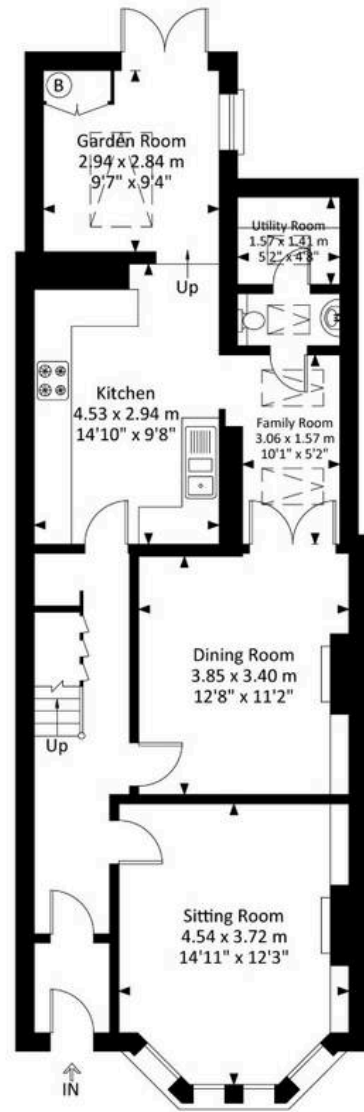


You can include any text here. The text can be modified upon generating your brochure.

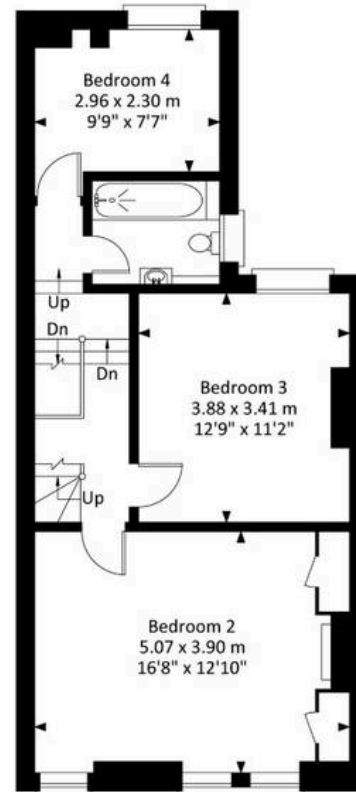


# 6 Cornwall Road, Bishopston, Bristol, BS7 8LH

Approximate Gross Internal Area = 158.17 sq m / 1702.52 sq ft  
(Excluding Eaves Storage)



Ground Floor



First Floor



Second Floor

Illustration for identification purposes only, measurement are approximate, not to scale.



## Elephant Estate Agents

Elephant, 2 The Promenade Gloucester Road - BS7 8AL

01173700556 • [bishopston@elephantlovesbristol.co.uk](mailto:bishopston@elephantlovesbristol.co.uk) • [www.elephantlovesbristol.co.uk/](http://www.elephantlovesbristol.co.uk/)