



1 Wavell Grove, Wakefield - WF2 6JW

£350,000 Freehold

Detached true bungalow, three bedrooms, two reception rooms, modern kitchen and bathroom, driveway and garage.
Sought after location. No Chain.

Entrance to Sun Lounge/Breakfast Room

5' 9" x 15' 0" (1.74m x 4.58m)

With aspect over the rear garden.

Inner Hallway

With downlighting, central heating radiator, provides access to ...

Breakfast Kitchen

15' 4" x 8' 0" (4.67m x 2.44m)

With double glazed dual aspect windows, fitted with a matching range of high gloss grey fronted wall and base units, contrasting worktop areas, colour co-ordinated sink unit, monobloc tap fitment, built in oven, hob with extractor hood over, fridge and freezer, washer dryer, central heating radiator, downlighting to the ceiling.

Living Room

14' 1" x 18' 2" (4.29m x 5.53m)

An excellent entertaining space, with double glazed feature bay window, central heating radiator.

Master Bedroom

12' 3" x 10' 8" (3.74m x 3.25m)

Having built in wardrobes, double glazed window overlooking the rear garden, central heating radiator.

Bedroom to Front/Dining Room

8' 9" x 11' 4" (2.66m x 3.45m)

With built in storage cupboard, central heating radiator, double glazed window.

Bedroom

9' 1" x 8' 9" (2.77m x 2.66m)

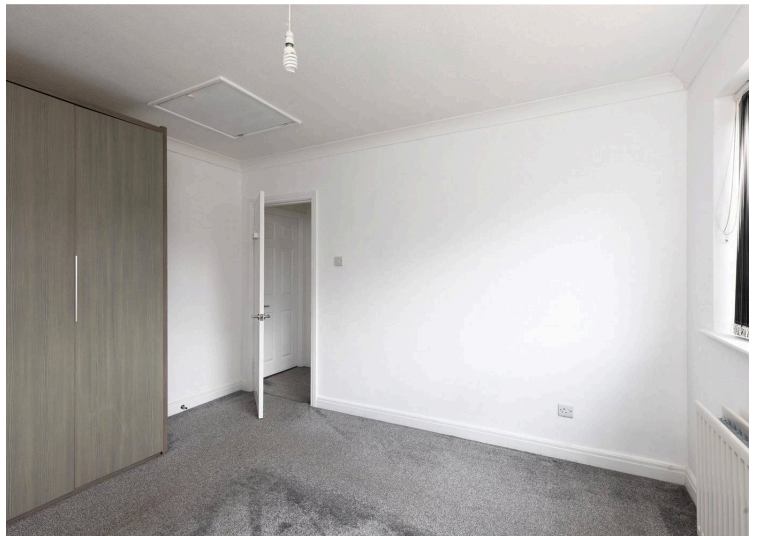
Having built in wardrobes, double glazed window, central heating radiator.

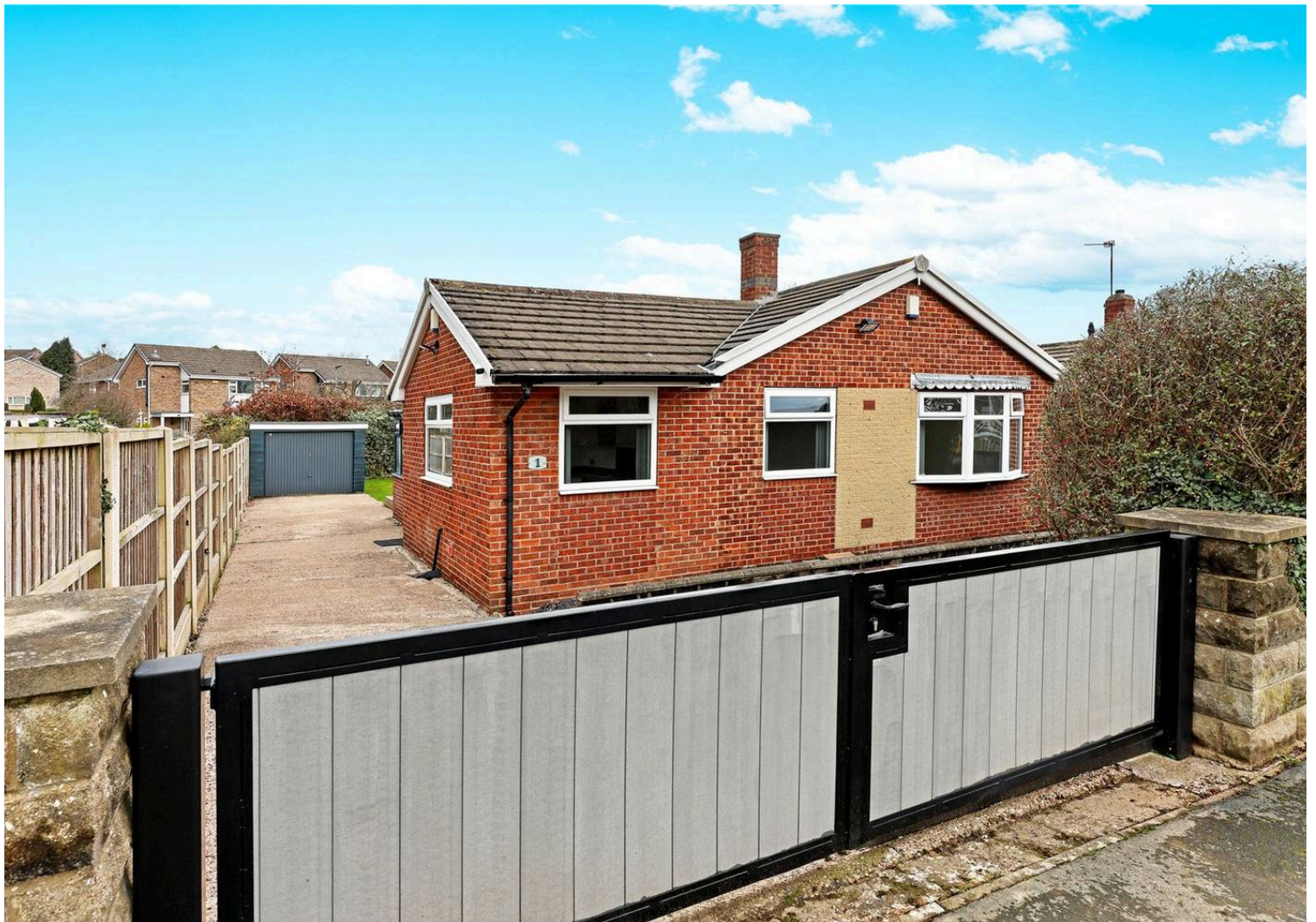
Combined Shower Room

Furnished with modern white suite with wash hand basin set in vanity unit, low flush w/c, walk-in shower, fully tiled with heated towel rail, electric shaver point, sensor light.

Outside

The property is accessed with double opening doors, low maintenance graveled garden area to the front, concrete driveway to the side provides ample off street parking leading to concrete sectional single car garage with automated up and over door, mainly laid to lawn gardens to the rear with feature decking area, all enclosed and level.





GROUND FLOOR
796 sq.ft. (73.9 sq.m.) approx.

