



SAB
ESTATES

Purcell Road, Greenford
£610,000

SAB
ESTATES



Purcell Road

Greenford

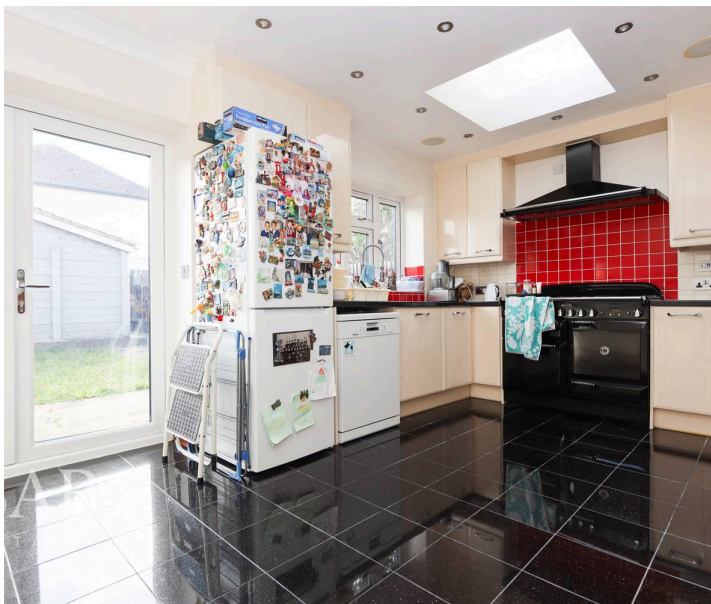
- Velux Loft Conversion (used as fourth bedroom)
- Excellent Condition Throughout
- Driveway for Multiple Vehicles
- Close to Greenford Broadway
- Private Rear Garden with Outbuilding
- Ground Floor Shower Room
- Walking Distance to Greenford Broadway Shops and Amenities
- Good Transport Links

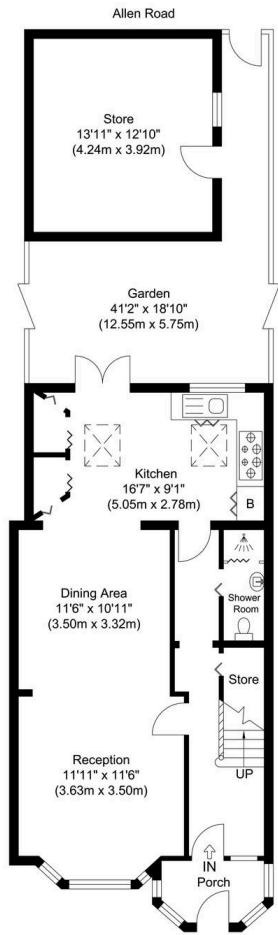
Council Tax band: D

Tenure: Freehold

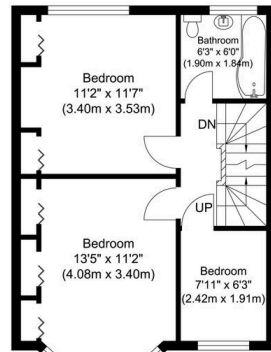
EPC Energy Efficiency Rating: D

EPC Environmental Impact Rating: D

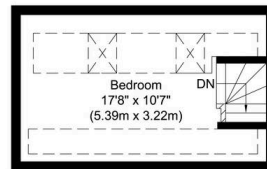




Ground Floor
Approximate Floor Area
621.72 sq. ft.
(57.76 sq. m)



First Floor
Approximate Floor Area
425.92 sq. ft.
(39.57 sq. m)



Top Floor
Approximate Floor Area
186.43 sq. ft.
(17.32 sq. m)

--- Restricted Head Height



Total Gross Internal Area (Including Storage)
1412.97 sq. ft.
(131.27 sq. m)

Total Gross Internal Area (Excluding Storage)
1234.08 sq. ft.
(114.65 sq. m)

Purcell Road, Greenford, UB6

Illustration for identification purposes only, measurements are approximate, not to scale.



SAB Estates

236-238 Ruislip Road, Greenford - UB6 9RS

020 8575 2929 • info@sabestates.com • www.sabestates.com/