



Osmaston Road, Derby  
£875 pcm

 **Comfort**  
Estates



## Osmaston Road

### Derby

Comfort Estates are delighted to present this fully furnished one-bedroom apartment, ideally located in Derby City Centre with a wide range of amenities right on your doorstep. This property offers stylish, modern living in a highly convenient location.

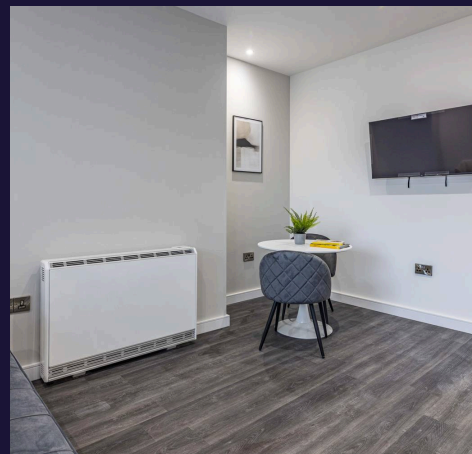
Situated on the second floor, the apartment briefly comprises an entrance hallway with a secure door entry system, a well-proportioned double bedroom, a contemporary bathroom, and an open plan living, dining and kitchen area. The property also benefits from a large internal storage cupboard and recent fixtures and fittings throughout.

Externally, the apartment includes an allocated parking space complete with an electric vehicle charging point.

A further benefit is the integrated air circulation and ventilation system, designed to help regulate airflow and assist in reducing humidity and moisture within the property.

Perfectly suited to a professional single occupant or couple seeking modern city living, this apartment is not to be missed.

Available from the 7th August 2026 - Enquire today to arrange your viewing.





### **Entrance**

Entering through the front door into a spacious hallway is access to the kitchen, bedroom and bathroom. With a secure door entry system. There is also a large storage cupboard housing the water tank and ventilation unit.

### **Open Plan Kitchen/Dining/Lounge**

A great sized open space with neutral walls and dark grey wood effect flooring throughout. Two large window floods the room with light and are dressed with vertical blinds. The room is fully furnished with a dining table with 2 chairs, a futon sofa, and free standing fridge freezer. There is a large electric heater, plenty of wall sockets and a smart TV. The kitchen features grey base and wall units with speckled white worktops and upstand. There is a chrome sink/drain, an electric oven and hob with extractor, integrated dishwasher and washing machine.

### **Bedroom**

Leading off the entranceway is the well proportioned bedroom with neutral walls and a feature blue wallpaper. There is a large window providing plenty of light and dressed with curtains. The room has a grey carpet and is fully furnished with a double bed/mattress, bedside table, wardrobe and chest of drawers. There is an electric heater and a large storage cupboard.

### **Bathroom**

The bathroom features a large shower cubicle with rain shower, WC, wash basin and chrome heated towel rail. There is slate coloured tiles and white paint to the walls and grey vinyl flooring. There is a large window which will be dressed with blinds.



## Comfort Estates

Comfort Estates, 47 Derby Road - NG1 5AW

0115 933 8997 • [info@comfortestates.co.uk](mailto:info@comfortestates.co.uk) • [www.comfortestates.co.uk](http://www.comfortestates.co.uk)