



Highlands Farm Cottage, Arlington Road West, Hailsham BN27 3RD

£1,350,000

**MANSELL
McTAGGART**

Trusted since 1947

Highlands Farm Cottage, Arlington Road West

Hailsham

A beautifully positioned period four bedroom detached farmhouse occupying 11.5 acres of pastureland and woodland with an incredible range of farm buildings and stables situated off a tree lined driveway.

Highlands Farm Cottage is a seldom found property, forming part of a historic dairy farm situated in a breath-taking position overlooking glorious countryside. The property has been home to the same family for over 40 years. There are a wide range of heritage farm buildings which have been well kept and boast many original features, in particular the Edwardian coach house and adjoining stable block.

The home itself has a huge amount of charm and character, with a part timber clad and part brick facade, large multi-pane windows and hipped tiled roof. Internally there are two reception rooms found to the front of the property, which include a double aspect sitting room with a wood burner, and a separate double aspect study. The kitchen is found to the rear and continues through to an open plan dining area. A set of French doors opens to the rear terrace and on into the garden. Also on the ground floor are an inner hallway and a shower room. An oak staircase rises to the first floor where there are four bedrooms and a family bathroom.

- A beautifully positioned period four bedroom detached farmhouse occupying 11.5 acres of pastureland and woodland with an incredible range of farm buildings and stables



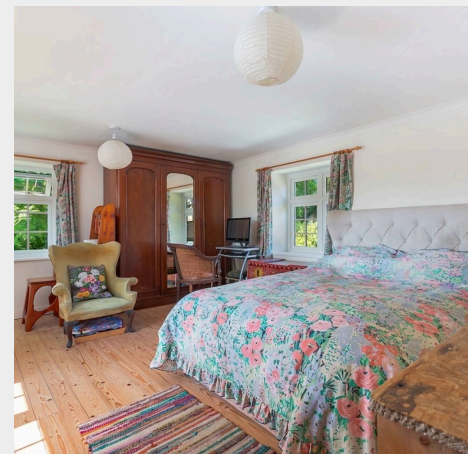


Highlands Farm Cottage, Arlington Road West

Hailsham

Outside, the front of the property is approached via a picturesque driveway, where you pass the farm buildings and arrive at a parking area. There are large informal cottage gardens surrounding the entire house. These are beautifully established with a vast array of mixed planting all positioned amongst the historic brick walls and pillars of what were older barns and outbuildings.

- A beautifully positioned period four bedroom detached farmhouse occupying 11.5 acres of pastureland and woodland with an incredible range of farm buildings and stables
- Charming period farmhouse
- Large informal cottage gardens
- The most impressive Edwardian coach house and stable block
- Breath-taking grounds and rural view
- The vast range of farm buildings have many distinguishing features and offer tremendous potential
- Dairy/one bedroom annex



Arlington Road, West Arlington Hailsham, BN27

Approximate Gross Internal Area = 1668 sq ft / 155.0 sq m

Hay Loft = 859 sq ft / 79.8 sq m

Outbuildings = 3001 sq ft / 278.8 sq m

Total = 5528 sq ft / 513.6 sq m



Illustration for identification purposes only, measurements are approximate, not to scale. www.enviromapLtd.co.uk (ID1306198)

Mansell McTaggart Uckfield

Mansell McTaggart, 204-206 High Street - TN22 1RD

01825 760770

uf@mansellmctaggart.co.uk

www.mansellmctaggart.co.uk/branch/uckfield

Consumer Protection from Unfair Trading Regulations 2008 We have not tested any apparatus, equipment, fixtures, fittings or services and so cannot verify that they are in working order or fit for purpose. You are advised to obtain verification from your solicitor or surveyor. References to the tenure of a property are based on information supplied by the seller. We have not had sight of the title documents and a buyer is advised to obtain verification from their solicitor. Items shown in photographs are not included unless specifically mentioned within the sales particulars, but may be available by separate negotiation.