



24 St. Richards Drive, Aldwick

Guide Price £550,000



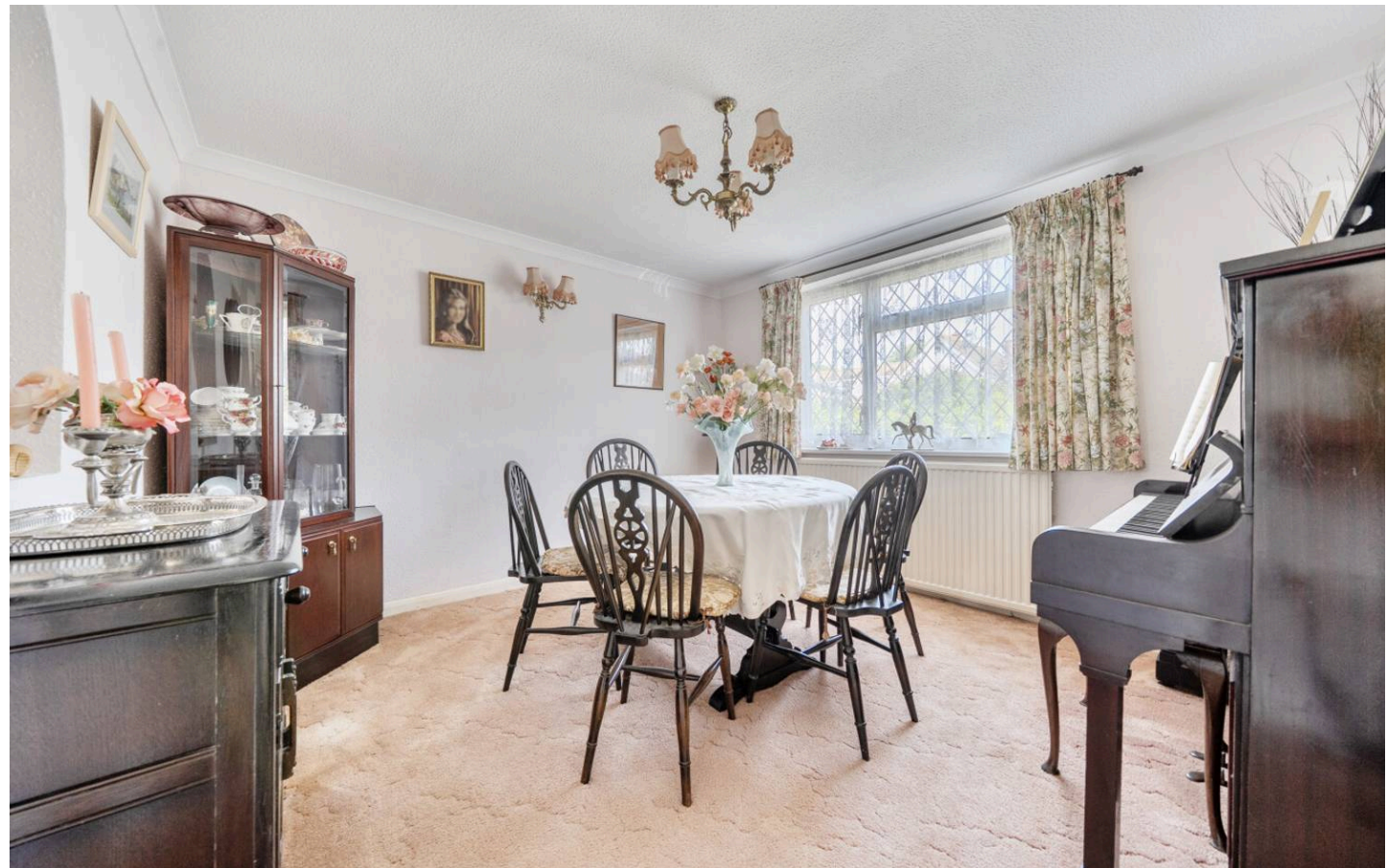
24 St. Richards Drive

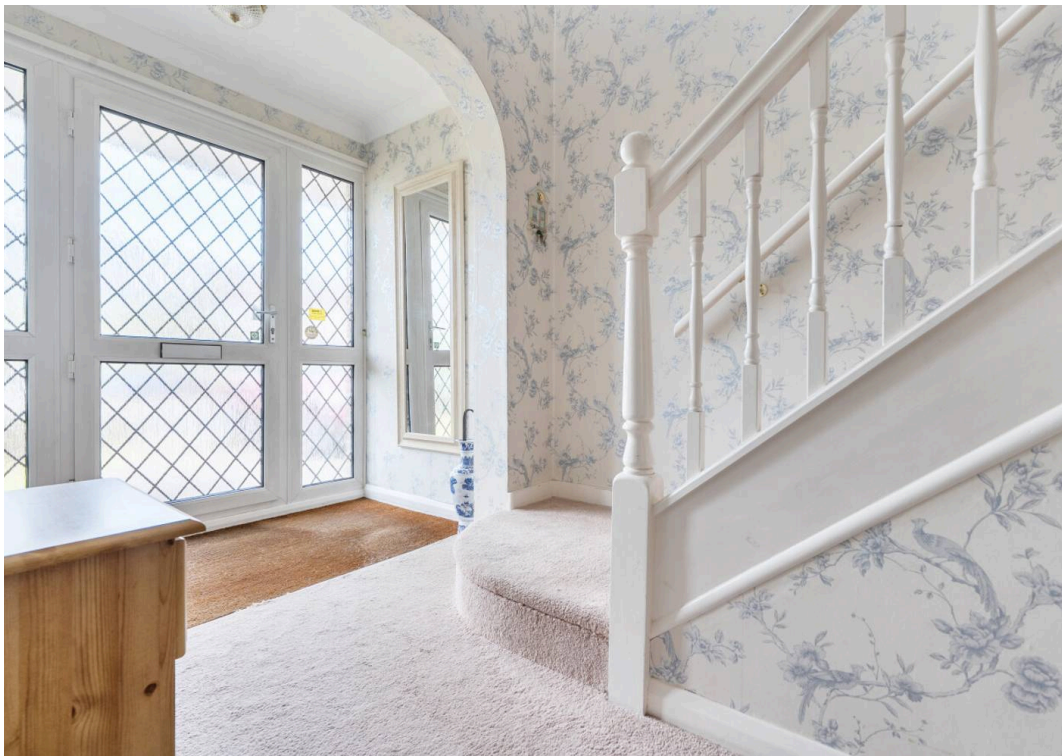
- Detached Individually Designed House
- Two Reception Rooms
- Spacious Kitchen
- Downstairs Cloakroom
- Four Double Bedrooms
- Principal Bedroom with En-Suite Shower
- Modern Family Bathroom
- Mature South Facing Garden
- Garage and Driveway
- No Onward Chain

Located in the quiet and desirable area of Aldwick, this individually designed and impressive four bedroom detached house presents a wonderful opportunity for families and discerning buyers alike. Situated less than one mile from Aldwick beach, the property is offered with no onward chain.

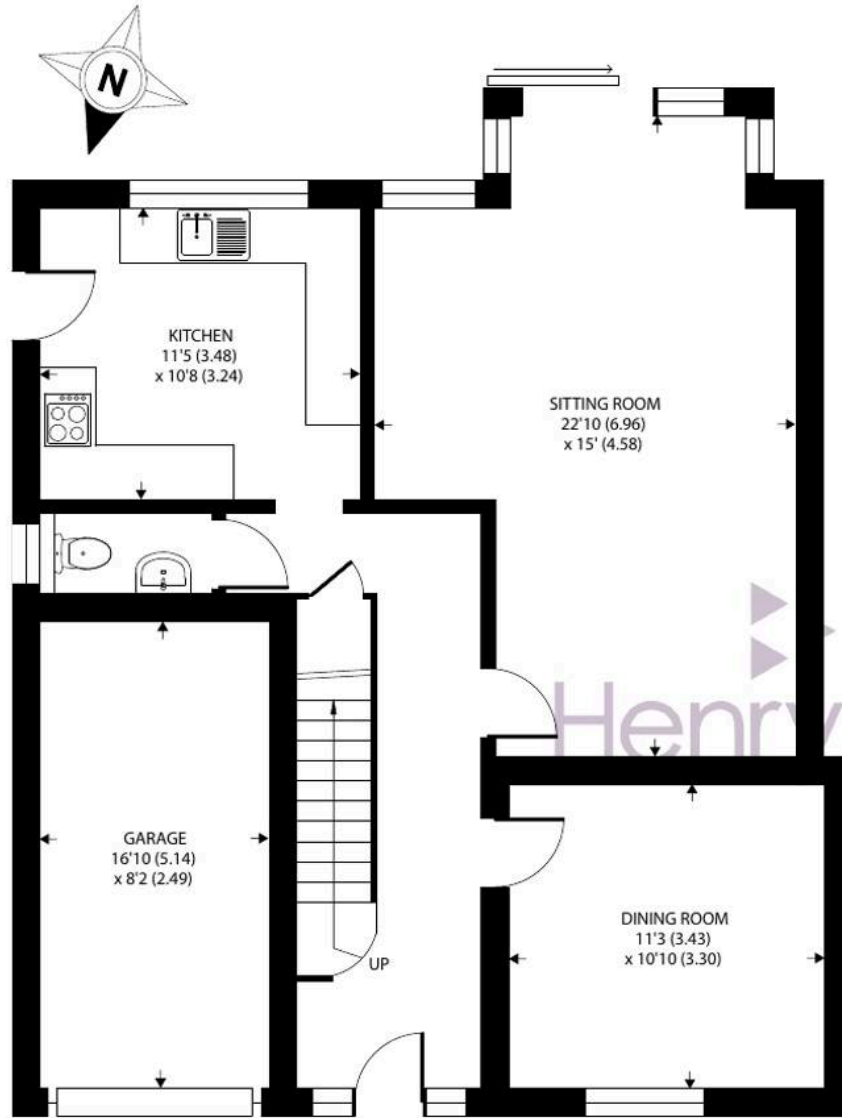
Upon entering, you are greeted by a welcoming hallway that leads to a generously sized reception room, which opens directly onto the south facing garden, creating a bright and inviting atmosphere throughout the ground floor. The accommodation further benefits from a separate dining room, ideal for entertaining family and guests, and a spacious kitchen with ample storage and workspace. A downstairs cloakroom adds convenience for guests and residents.

Upstairs, you will find four double bedrooms, with the principal bedroom having an en-suite shower, each offering comfortable living space and flexibility for family life, home working, or hobbies. The family bathroom is fitted with a modern white suite with vanity WC and basin and shower over panel bath.

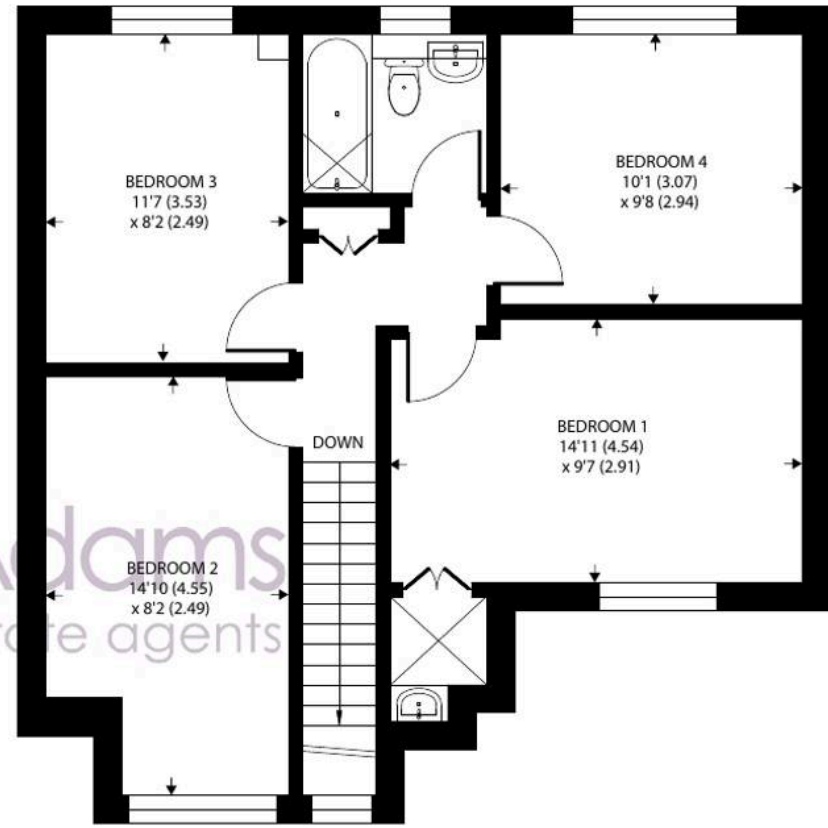








GROUND FLOOR



FIRST FLOOR

St. Richards Drive, Bognor Regis

Approximate Area = 1347 sq ft / 125.1 sq m

Garage = 136 sq ft / 12.6 sq m

Total = 1483 sq ft / 137.7 sq m

For identification only - Not to scale



Floor plan produced in accordance with RICS Property Measurement 2nd Edition, Incorporating International Property Measurement Standards (IPMS2 Residential). © ntechcom 2026. Produced for Henry Adams. REF: 1466882

The property also includes a garage, providing secure storage or parking, and driveway for off-street parking for additional vehicles.

The outside space is a true highlight of this home, featuring a lovely south facing garden that captures sunlight throughout the day. This private outdoor area is perfect for alfresco dining, gardening, or simply relaxing in the peaceful surroundings. Mature shrubs and well-tended borders create a sense of seclusion, while a patio area provides an ideal spot for outdoor seating. The garden is easily accessible from the reception room, making it perfect for seamless indoor-outdoor living. The front of the property offers a neat driveway with off-street parking and access to the garage.

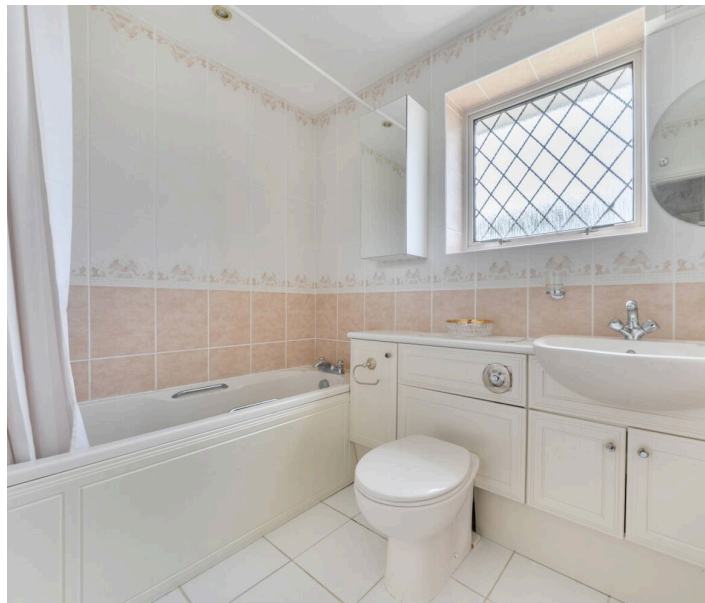
Aldwick is a sought after neighbourhood, within easy reach of Rose Green village which offers a range of local amenities including schools, a pharmacy, post office, library, doctors surgery, convenience food store and transport links, making it a practical and attractive choice for families or anyone seeking a comfortable and well-appointed home in a popular residential area.

What3Words [///goggles.divide.gossiping](https://www.what3words.com/goggles.divide.gossiping)

Council Tax band: E

Tenure: Freehold

EPC Energy Efficiency Rating: E





Henry Adams - Bognor and Aldwick

Henry Adams LLP, 25 High Street, Bognor Regis - PO21 1RS

01243 842123

bognorandaldwick@henryadams.co.uk

www.henryadams.co.uk

Agents Note - Our particulars are for guidance only and are intended to give a fair overall summary of the property. They do not form part of any contract or offer, and should not be relied upon as a statement or representation of fact. Measurements, areas and distances are approximate only. Photographs may include lifestyle shots and pictures of local views. No undertaking is given as to the structural condition of the property, or any necessary consents or the operating ability or efficiency of any service, system or appliance. Please ask if you would like further information, especially before you travel to the property.