

## 21 Pomeroy Street, Cardiff

£240,000 Freehold

**\*\*MID TERRACED HOUSE IN THE HEART OF CARDIFF BAY\* NO CHAIN\*\*** MGY are pleased to bring to market this well presented, two bedroom, mid-terraced hous...

Council Tax band: D

Tenure: Freehold

EPC Energy Efficiency Rating: D

EPC Environmental Impact Rating: E

## **ENTRANCE HALL**

Entered via front door leading from front courtyard. Laminate flooring. Radiator. Pendant light fitting. Door to lounge.

## **LOUNGE**

Dimensions: 12' 11" x 9' 6" (3.94m x 2.92m). Double glazed uPVC bay windows to front aspect. Laminate flooring. Feature fireplace. Pendant light fittings. Power points. TV and telephone point. Radiator. Coving to ceiling. Open plan and arch leading to dining room.

## **DINING ROOM**

Dimensions: 12' 9" x 10' 9" (3.89m x 3.30m). Double glazed uPVC windows to rear aspect. Continuation of laminate flooring. Feature fireplace. Power points. Radiator. Stairs rising to first floor. Coving to ceiling. Door leading to kitchen.

## **KITCHEN**

Dimensions: 10' 7" x 8' 5" (3.25m x 2.59m). Tiled flooring. Fitted kitchen with a range of wall, base and drawer units with worktops over incorporating stainless steel sink and drainer with mixer tap over and four ring gas hob with extractor above and oven beneath. Tiled splashback. Power points. Pendant light fitting. Double glazed uPVC window to side aspect. Double glazed uPVC door leading to rear garden. Space for washing machine and fridge/freezer.

## **FIRST FLOOR**

Carpet to stairs and landing. Doors to both bedrooms and bathroom. Pendant light fitting. Loft hatch.

## **MASTER BEDROOM**

Dimensions: 10' 2" x 10' 2" (3.12m x 3.10m). Carpet to floor. Pendant light fitting. Radiator. Power points. Double glazed uPVC window to front aspect. Two alcoves.

## **BEDROOM TWO**

Dimensions: 11' 3" x 10' 2" (3.45m x 3.12m). Carpet to floor. Double glazed uPVC window to rear aspect. Power points. Pendant light fitting. Radiator. Two alcoves.

## **BATHROOM**

Vinyl flooring. Partially tiled walls. Pendant light fitting. Double glazed uPVC window to rear aspect. Pedestal wash hand basin with mixer tap over. WC. Walk in shower cubicle with electric shower over. Free standing roll top bath with mixer tap over and handheld shower attachment. Extractor. Towel rail.

## **OUTSIDE**

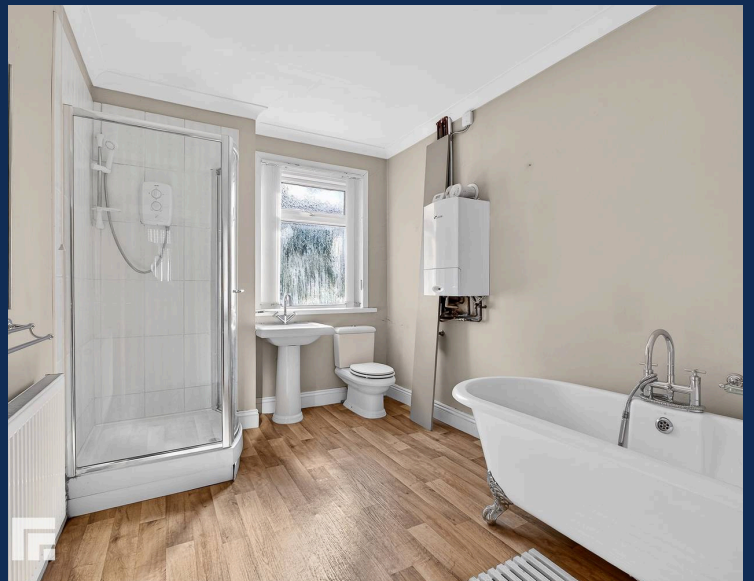
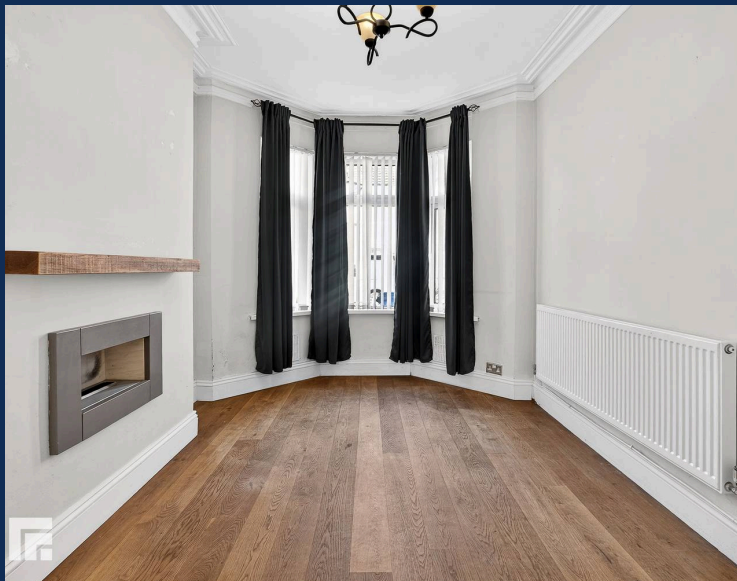
Low maintenance rear garden. Laid to patio. Shingled area. Fence and wall border. Outside tap. Accessed from the kitchen.

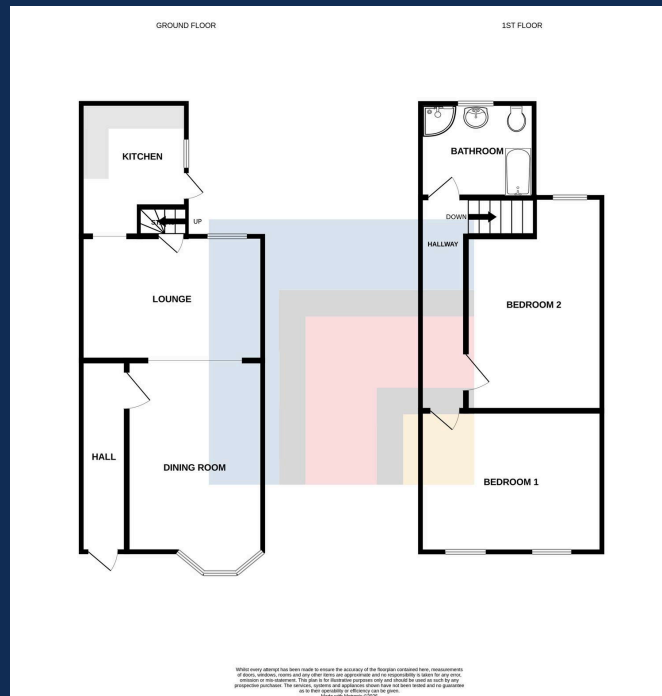
## **TENURE**

MGY have been advised that the property is FREEHOLD.

## **AML**

Please note: A non-refundable administration fee of £30 including VAT is payable per buyer to carry out the required AML verification checks once an offer has been accepted. The sale cannot proceed until these checks have been satisfactorily completed. This is on acceptance of offer only. Details can be found on our website.





**CARDIFF** 029 2046 5466

13 Mount Stuart Square, Cardiff Bay, Cardiff,  
South Glamorgan, CF10 5EE



**Important Notice:** These particulars are prepared for guidance only and do not form whole or any part of any offer or contract. Whilst the particulars are given in good faith, they are not to be relied upon as being a statement or representation of fact. They are made without responsibility on the part of MGY Ltd or Vendor/lessor and the prospective purchaser/lessee should satisfy themselves by inspection or otherwise as to their accuracy. Neither MGY Ltd nor anyone in their employ, or the vendor/lessor, imply, make or give any representation/warranty whatsoever in relation to this property.

The services of our recommended mortgage brokers and solicitors may be beneficial. While a referral fee may be received if they are chosen, there is no obligation to use their services, and an alternative mortgage provider/solicitor can be chosen.

**MGY.CO.UK**