



Holdens
ESTATE AGENTS

943 Whittingham Lane, Whittingham
£195,000

Holdens
ESTATE AGENTS



943 Whittingham Lane

Whittingham, Preston

Charming two-bed mid-terrace with two receptions, sun room, kitchen, ground floor WC, garage, large rear garden, open field views. Requires updating. Ideal for first-time buyers or downsizers.

Council Tax band: B

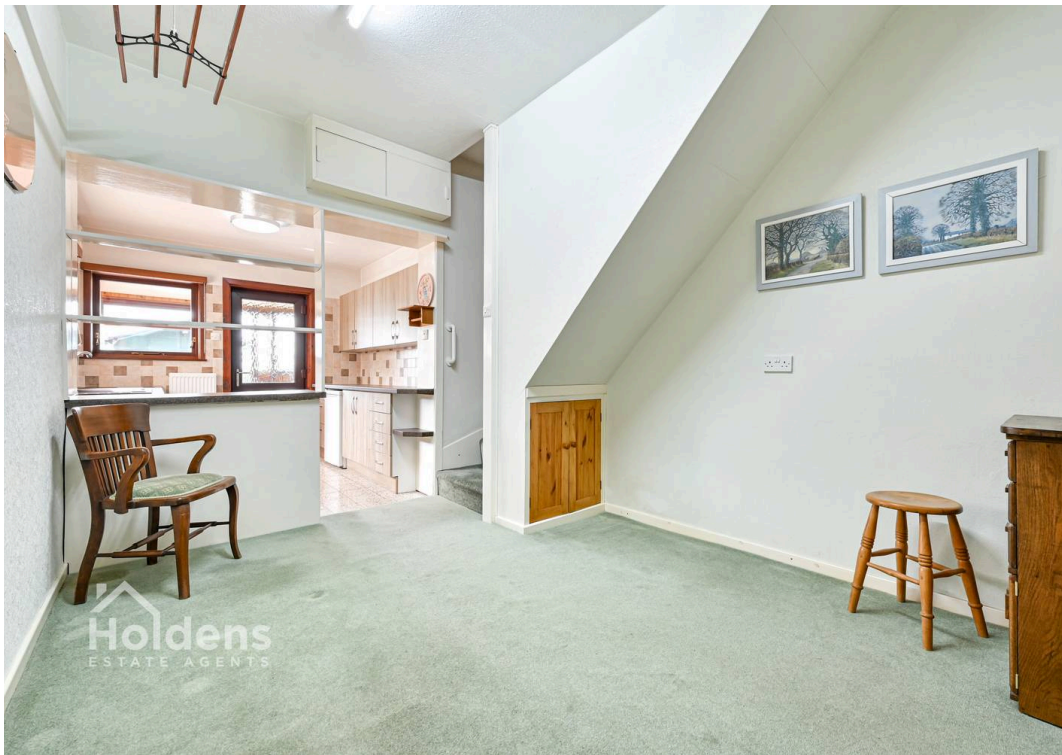
Tenure: Freehold

EPC Energy Efficiency Rating: D

EPC Environmental Impact Rating:

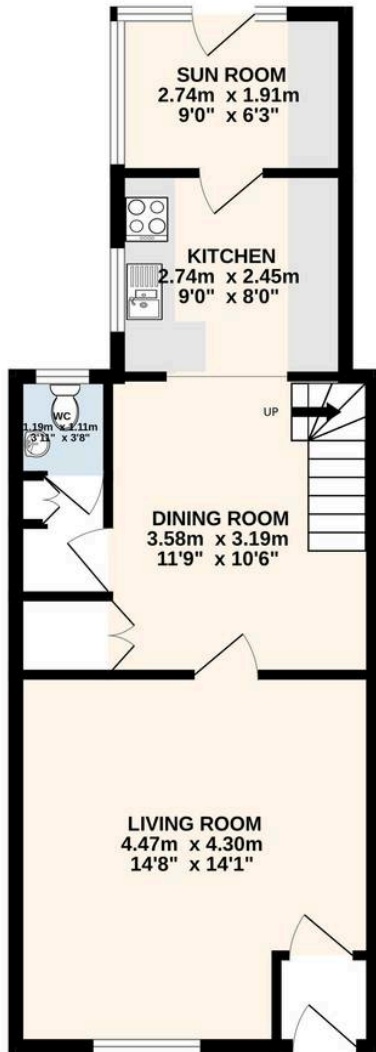
- Mid terrace
- Two reception rooms plus Sun room
- Kitchen
- Ground floor WC
- Two bedrooms & family bathroom
- Some updating now required
- Garden frontage & enclosed rear yard
- Fabulous adjacent garden to the rear
- Detached garage
- Views across open fields to the rear



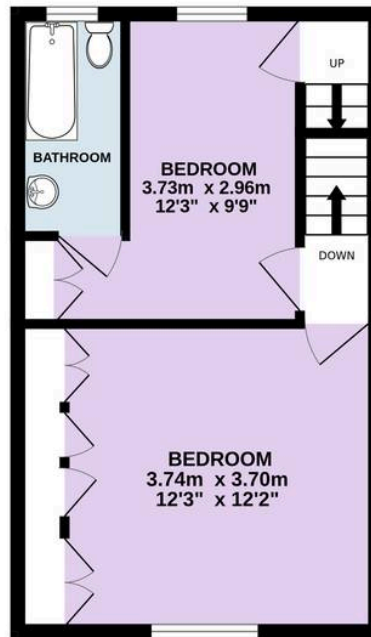




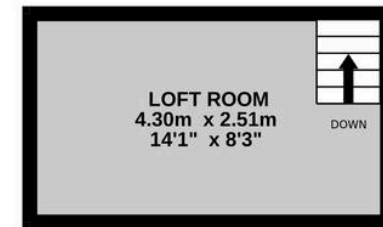
GROUND FLOOR
46.6 sq.m. (502 sq.ft.) approx.



1ST FLOOR
31.9 sq.m. (344 sq.ft.) approx.



2ND FLOOR
10.8 sq.m. (116 sq.ft.) approx.



TOTAL FLOOR AREA : 89.3 sq.m. (961 sq.ft.) approx.
Every attempt is made to ensure accuracy, however all measurements are approximate. This plan is for illustrative purposes only and is not to scale.
Made with Metropix ©2026



Holdens Longridge

66 Derby Road, Longridge – PR3 3FE

01772 233380

longridge@holdens.co.uk

www.holdens.co.uk/

Disclaimer: All information such as plans, dimensions, and details about the property's condition or suitability is provided in good faith and believed to be accurate, but should not be relied upon without independent verification. Buyers or tenants must carry out their own checks. Appliances and systems haven't been tested. It's strongly advised to get professional inspections before making any commitments. No employee or agent of Holdens Estate Agents is authorised to make promises or guarantees about the property. These details are for general guidance only and do not form part of any contract. All discussions with Holdens Estate Agents are subject to contract.