



Enhanced with AI by STREET_02

Castle Boulevard, Nottingham
£1,050 pcm





Castle Boulevard, Nottingham

A well-presented two-bedroom top-floor apartment situated in the highly desirable Park Estate, just a short walk from Nottingham City Centre and the train station.

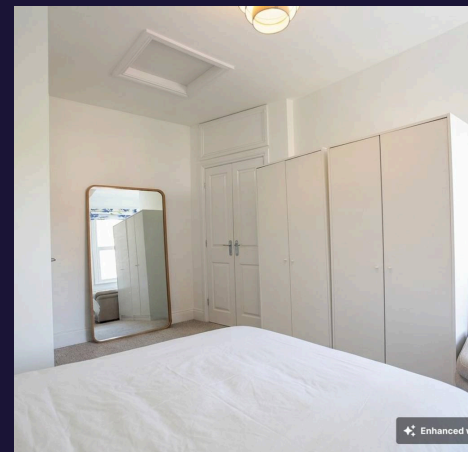
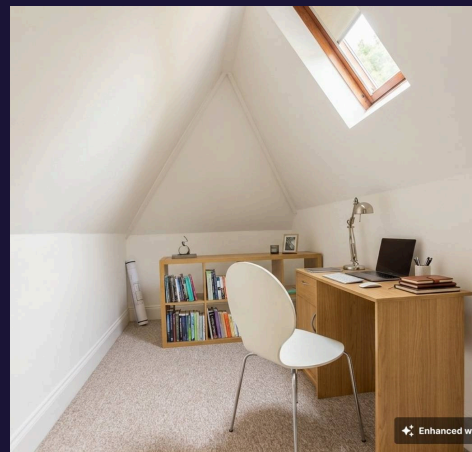
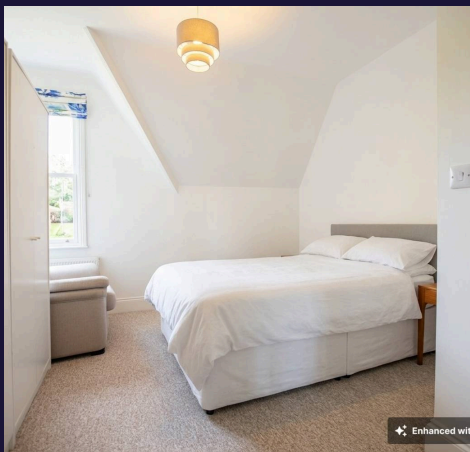
The accommodation comprises a spacious entrance hall with room for a study area, a generous living room with feature fireplace, a fitted kitchen complete with white goods, two bedrooms and a bathroom with separate bath and shower.

The main bedroom benefits from a built-in storage cupboard and enjoys pleasant views over Fishpond Drive. The second bedroom is a versatile space featuring a Velux roof window, making it ideal as a guest room, home office or occasional bedroom. The bathroom includes both a bath and separate shower and enjoys views towards Nottingham Castle.

Further benefits include access to communal gardens, on street permit parking and a convenient location close to local amenities, including a large Sainsbury's supermarket.

Offered furnished with white goods.

Available 13th July.





Living Room

15' 1" x 14' 4" (4.59m x 4.36m)

Generous living room featuring a fireplace and enough room for a table and chairs or desk. Neutrally decorated with carpeted flooring.

Kitchen

15' 9" x 9' 3" (4.79m x 2.81m)

Modern kitchen featuring a range of wall and base units, with integrated white goods (fridge, dishwasher, washing machine, oven, hob and extractor fan). Neutrally decorated with vinyl flooring.

Main Bedroom

14' 3" x 12' 4" (4.34m x 3.76m)

Spacious bedroom with storage cupboard with views onto Fishpond Drive. Neutrally decorated with carpeted flooring.

Bedroom / Study

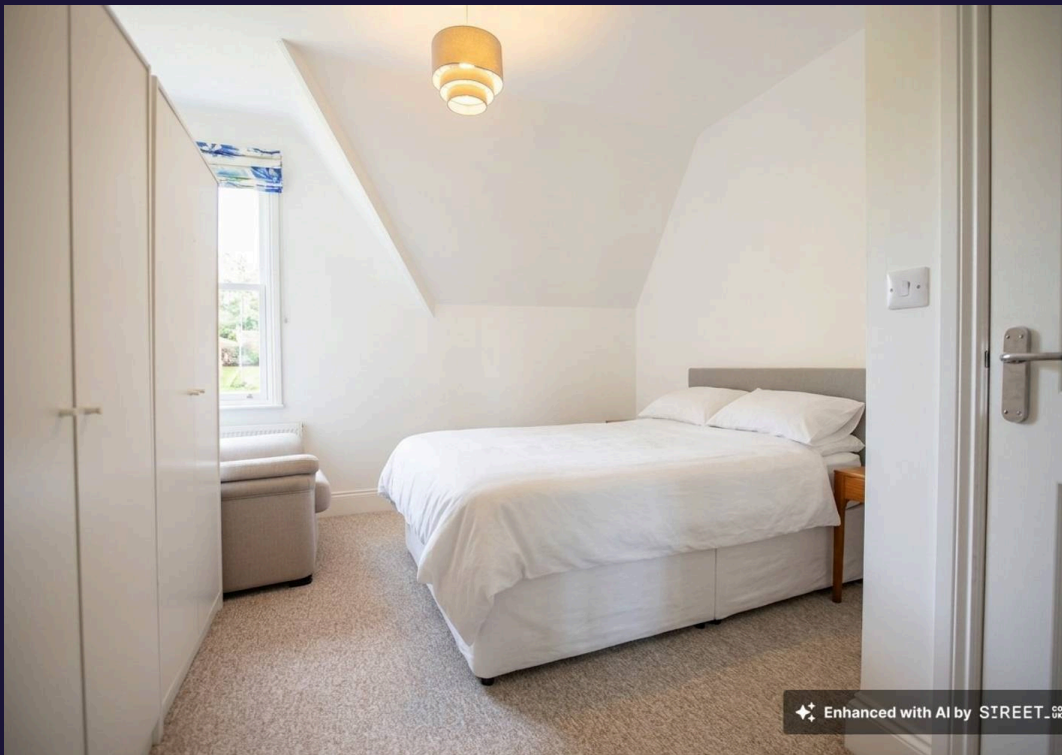
14' 10" x 6' 5" (4.52m x 1.96m)

Versatile space featuring a Velux roof window, making it ideal as a guest room, home office or occasional bedroom. Neutrally decorated with carpeted flooring.

Bathroom

8' 2" x 7' 1" (2.48m x 2.17m)

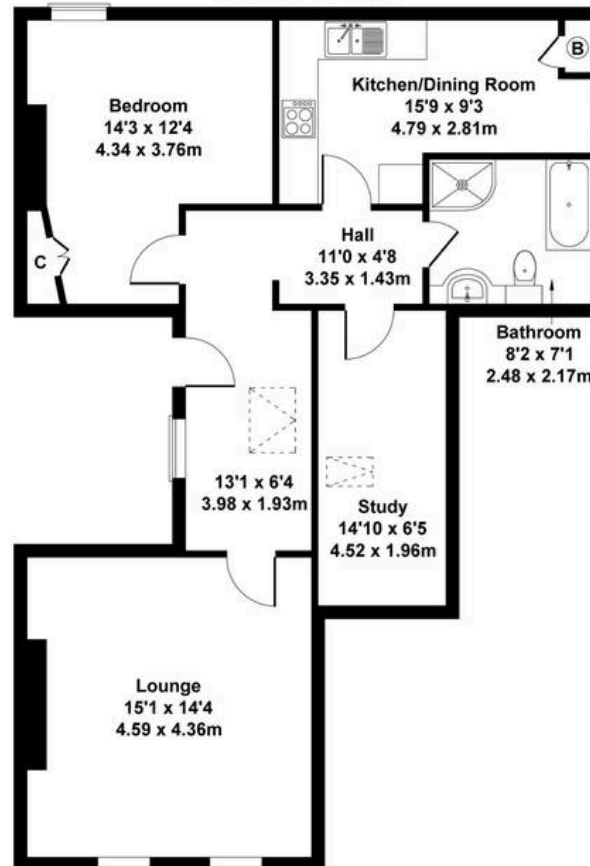
Bathroom comprising a separate bath and shower, with views towards Nottingham Castle. Neutrally decorated, vinyl flooring and large towel radiator.





Comfort Estates

Approximate Gross Internal Area
807 sq ft - 75 sq m



Not to Scale. Produced by The Plan Portal 2026
For Illustrative Purposes Only.



Comfort Estates

Comfort Estates, 47 Derby Road - NG1 5AW

0115 933 8997 • info@comfortestates.co.uk • www.comfortestates.co.uk