



Cromwell Drive, Huntingdon - PE29 6LB  
£185,000



HARVEY  
ROBINSON

# Cromwell Drive

## Huntingdon

- 2 Double Bedrooms
- First Floor Apartment
- Ideal First Purchase or Investment
- No Onward Chain
- Generous Living Space
- Sought After Location in Hinchingsbrooke
- Well Presented Throughout
- Allocated Parking

### INTRODUCTION

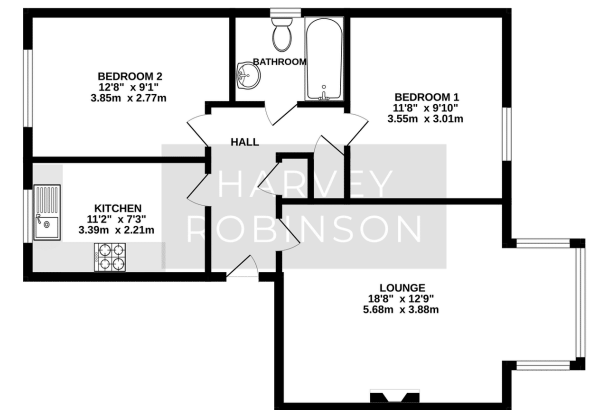
Harvey Robinson Estate Agents are delighted to offer for sale this beautifully presented two double bedroom first floor apartment, ideally situated within the highly desirable Hinchingsbrooke area of Huntingdon.

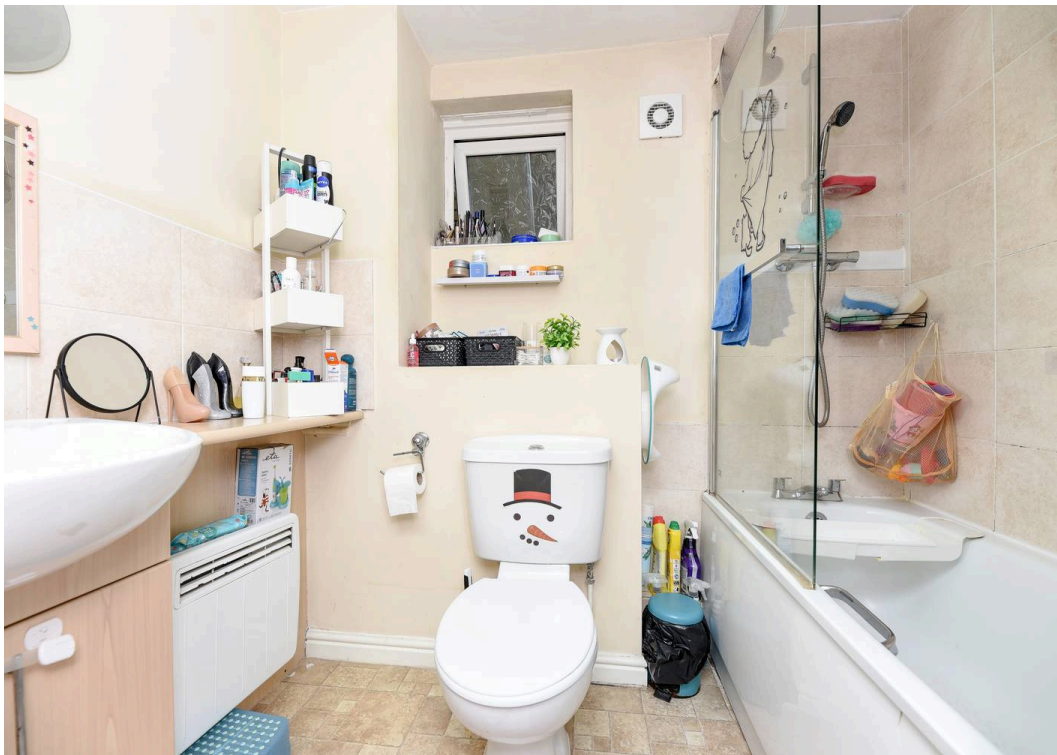
The property briefly comprises an entrance hall, lounge, a kitchen, two generous double bedrooms, and a modern family bathroom. Externally, the property benefits from an allocated parking space and well maintained communal areas. The apartment is conveniently positioned close to a range of local amenities, excellent transport links, Huntingdon town centre, and Hinchingsbrooke Hospital, making it an attractive option for a variety of buyers. This property represents an excellent opportunity for first-time buyers looking to take their first step onto the property ladder, as well as investors seeking a well-located addition to their portfolio.

Early viewing is highly recommended to fully appreciate the accommodation and location on offer. Harvey Robinson Estate Agents are delighted to offer for sale this beautifully presented two double bedroom first floor apartment, ideally situated within the highly desirable Hinchingsbrooke area of Huntingdon.

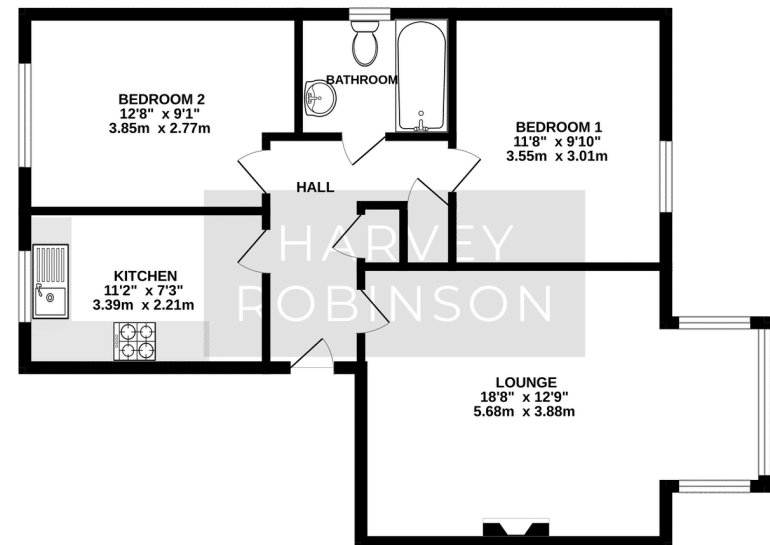


GROUND FLOOR  
628 sq.ft. (58.4 sq.m.) approx.





GROUND FLOOR  
628 sq.ft. (58.4 sq.m.) approx.



# 6 Cromwell Drive

## Huntingdon

### LOCATION

Hinchingbrooke is one of the most sought after locations in Huntingdon as it has something for all ages. Hinchingbrooke Country Park is located within walking distance which covers 150 acres of open grasslands, mature woodland and lakes. It is a great place to visit for families, nature spotters, dog walkers and those who wish to enjoy the great outdoors. There is a mix of play areas, a cafe, hard-surfaced and muddy paths, secluded woodlands and wildflower meadows all within a short walk.

The property is ideal for commuters as it's within walking distance to Huntingdon's Main Line Station which provides an easy fast track service into London's Kings Cross within the hour. Major road links A1(M) & A14 are on your door step also.

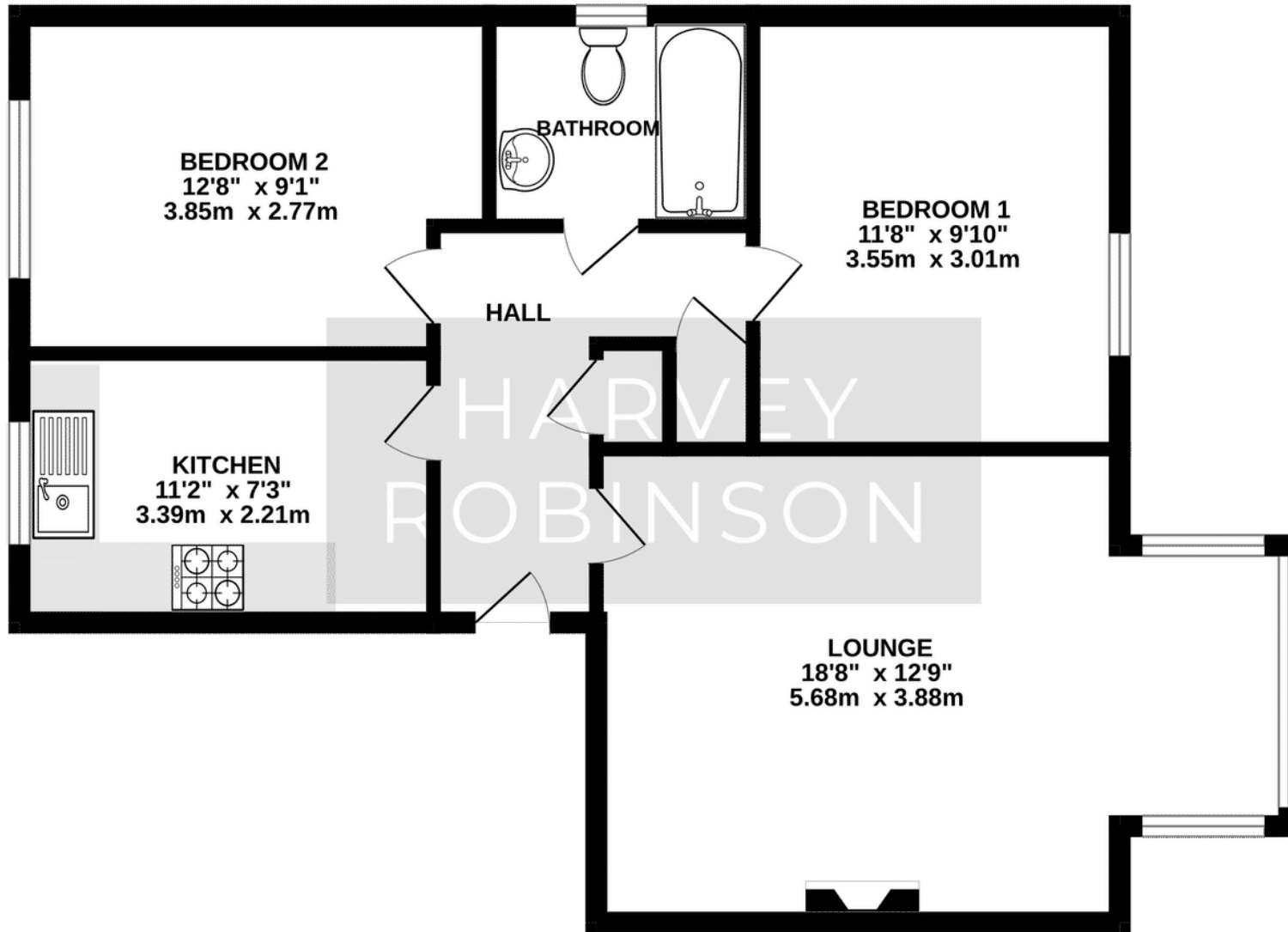
Huntingdon's Town Centre is located within less than 1 mile of Hinchingbrooke which has a number of great local amenities and riverside walks. In the town itself, you'll find many familiar High Street brands, such as Marks and Spencer's, WH Smiths, Boots, TK Maxx and more. There are also some great pubs and restaurants in the town in particular The Restaurant and Wine Shop at the Old Bridge Hotel is well worth a visit.

Hinchingbrooke itself, has a convenience store and take away, Grill Istanbul if you were after a midweek treat. Hinchingbrooke Hospital is located in the heart of Hinchingbrooke, first opened in 1983 and has many different departments and it's own Costa café.

Primary School Catchment, Cromwell Academy and Hinchingbrooke Secondary School are highly rated schools within Huntingdon and are both within walking distance.



GROUND FLOOR  
628 sq.ft. (58.4 sq.m.) approx.





# Cromwell Drive

## Huntingdon

### FAQ'S

Tenure: Leasehold

Lease: 105 Years Remaining

Management Company: Block Management, Suffolk

Management Fee: £1,800 approx p/a

Ground Rent: £150 p/a

Freeholder: BDW Trading LTD

Vendors Onward Movements: No chain

Council Tax Band: B

WhatThreeWords: ///relishing.fatigued.selects

Rental Potential: £1000 - £1100 per month.

Please note we have not tested any apparatus, fixtures, fittings, or services. Interested parties must undertake their own investigation into the working order of these items. All measurements are approximate, and photographs provided for guidance only.

Need to sell your property? Please contact us to arrange your free, no obligation Market Appraisal.

For independent whole of market mortgage advice please call the team to book your appointment.

View all our properties at [harveyrobinson.co.uk](https://www.harveyrobinson.co.uk)

Rated Exceptional in Best Estate Agent Guide 2024 & 2025

British Property Awards 2023, 2024 & 2025 – Gold Winner

British Property Awards 2025 Regional Silver Winner in East of England

5.0 Star Google Review Rating

