



  
**Holdens**  
ESTATE AGENTS

**58 Moss Lane, Lostock Hall**

Offers Over **£189,950**

  
**Holdens**  
ESTATE AGENTS



## 58 Moss Lane

Lostock Hall, Preston

Beautifully finished three-bedroom semi-detached home with modern kitchen diner, garage, and stylish décor. Freehold. Convenient location near amenities, schools, and transport links. Move-in ready.

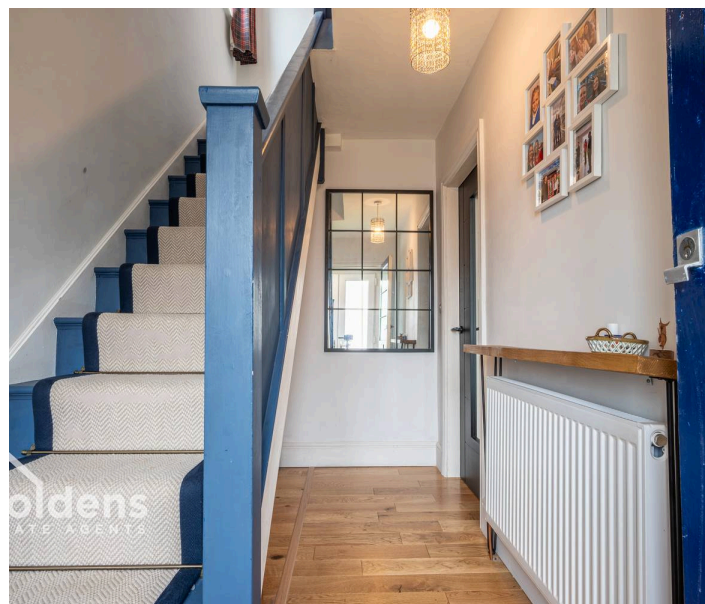
Council Tax band: B

Tenure: Freehold

EPC Energy Efficiency Rating: C

EPC Environmental Impact Rating:

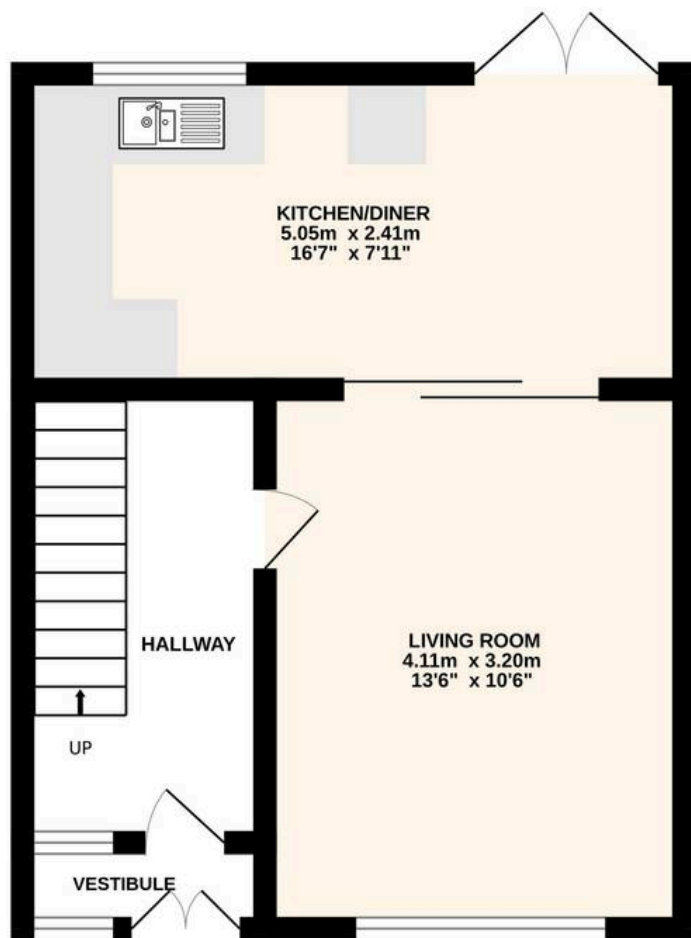
- Beautifully Presented Throughout
- Three-bedroom Semi-Detached Property
- Freehold
- Spacious Lounge
- Modern Kitchen Diner With Integrated Appliances
- Contemporary Three-Piece Shower Room
- Ideal For First-Time Buyers And Young Families
- Convenient Location Close To Amenities And Transport Links
- Detached Garage
- Gardens To Front And Rear



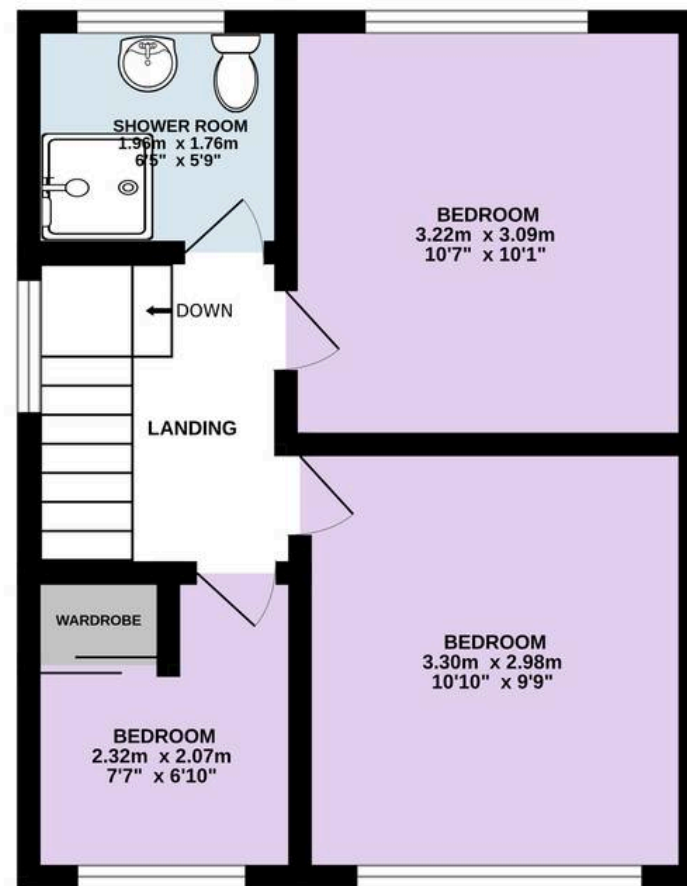




GROUND FLOOR  
32.9 sq.m. (354 sq.ft.) approx.



1ST FLOOR  
32.9 sq.m. (354 sq.ft.) approx.



TOTAL FLOOR AREA : 65.9 sq.m. (709 sq.ft.) approx.

Every attempt is made to ensure accuracy, however all measurements are approximate. This plan is for illustrative purposes only and is not to scale.  
Made with Metropix ©2026



## Holdens Lostock Hall

Holdens Estate Agents, 6 Watkin Lane - PR5 5RD

01772 698888

lostockhall@holdens.co.uk

[www.holdens.co.uk/](http://www.holdens.co.uk/)

Disclaimer: All information such as plans, dimensions, and details about the property's condition or suitability is provided in good faith and believed to be accurate, but should not be relied upon without independent verification. Buyers or tenants must carry out their own checks. Appliances and systems haven't been tested. It's strongly advised to get professional inspections before making any commitments. No employee or agent of Holdens Estate Agents is authorised to make promises or guarantees about the property. These details are for general guidance only and do not form part of any contract. All discussions with Holdens Estate Agents are subject to contract.