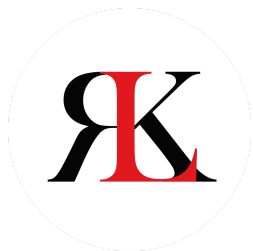




The Workshop, rear of 26b North Crescent, Haverfordwest

£135,000 Freehold



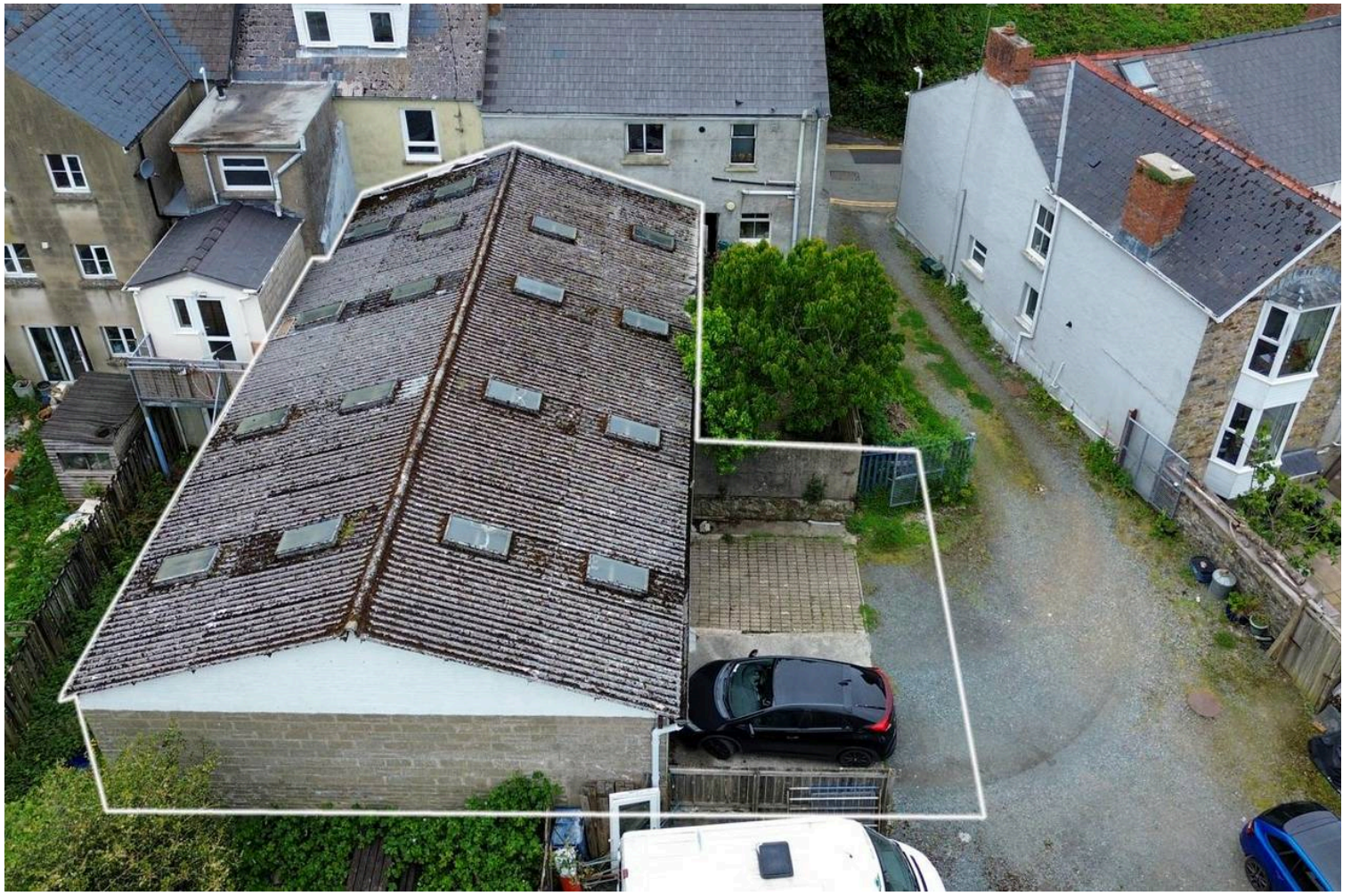
01437 762538



01646 695713



sales@rkucas.co.uk



Council Tax band: TBD

Tenure: Freehold

- Spacious industrial garage/workshop with roller door
- Secure off-road parking
- Multiple skylights (enhanced natural light)
- Versatile workshop or storage options
- Central town location

Workshop

45' 11" x 27' 6" (14.00m x 8.38m)

Large workshop with full height roller door with pedestrian door, skylights, windows and storage loft

Office

19' 9" x 8' 8" (6.01m x 2.65m)

Window and door

Store

11' 11" x 5' 2" (3.63m x 1.58m)

Toilet

WC, wash hand basin and urinal

C-EPC

To be confirmed

Planning Permission

Planning Permission: All enquiries to the Planning Department of Pembrokeshire Council (01437 764551)

Business Rates

Business Rates: £4,200 pa

Services

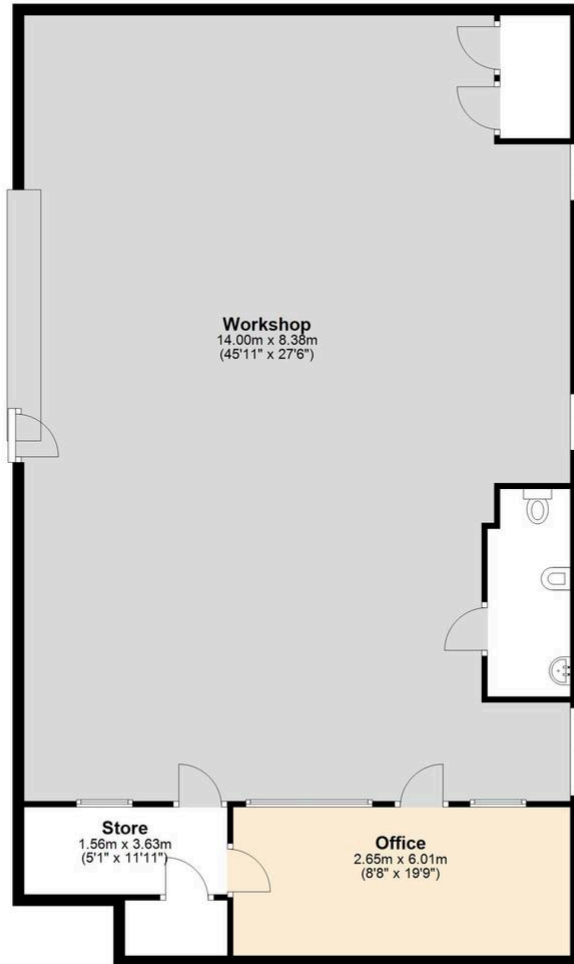
Services: We are advised that mains electricity, water and drainage are connected to the property. Prospective purchasers should clarify this information with the service providers.

Fixtures, Fittings & Appliances

None of these have been tested by the Agents

Ground Floor

Approx. 161.2 sq. metres (1735.0 sq. feet)



Total area: approx. 161.2 sq. metres (1735.0 sq. feet)

Workshop, North Crescent

