



15 Rudthorpe Road, Bristol

Guide Price **£500,000**

15 Rudthorpe Road

Bristol

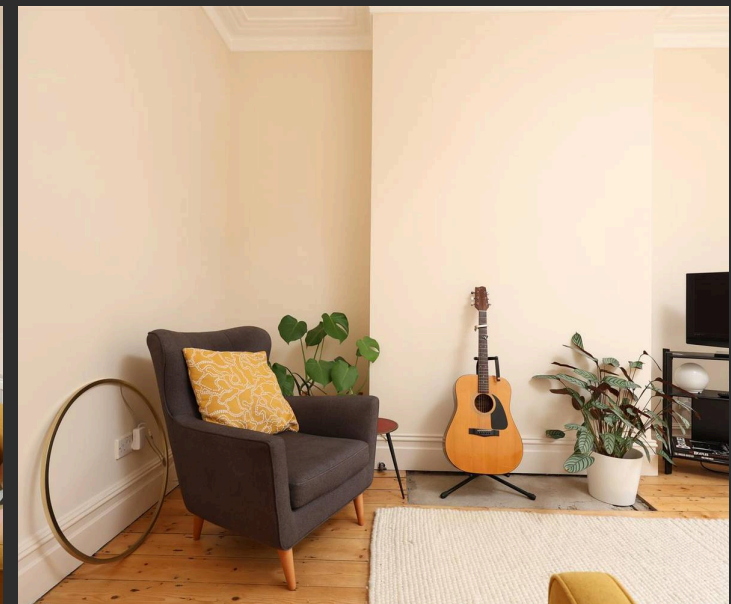
- No onward chain
- Victorian terrace
- Three bedrooms
- Good sized garden
- Near to Ashley Down Primary School
- Great location
- Close to Gloucester Road
- Within walking distance to Fairfield Secondary School and Trinity Academy
- Scope to extend
- 995 sqft

A well presented three bedroom Victorian home conveniently located on the popular Rudthorpe Road in Horfield and sold with no onward chain.

The accommodation comprises main vestibule entrance with original stained glass windows and double doors leading into a spacious hallway, complete with a stripped wood floor and doors to all ground floor rooms. At the front of the property is the main reception room featuring a bay window with the original timber-framed sashes. Further features include cornice and stripped wood floorboards.

The adjacent second reception/dining room is complete with a stripped wood floor, cornice and a sash window overlooking the garden. The kitchen at the rear has a range of modern wall and base units with an integrated gas hob and a electric oven, space for freestanding appliances, and a door leading to the rear garden.

On the first floor are three bedrooms and the family bathroom. Bedroom one with bay window is located at the front of the house and benefits from fitted wardrobes and a dresser. Next door, bedroom two is



15 Rudthorpe Road

Bristol

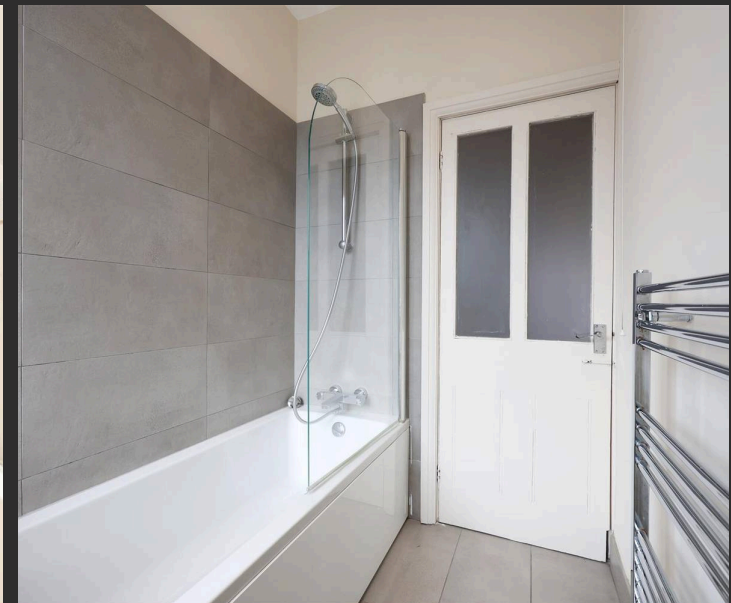
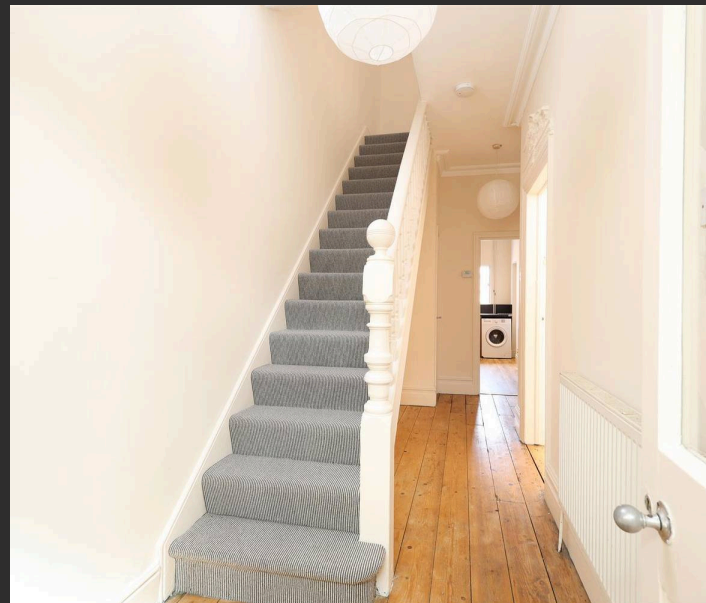
- No onward chain
- Victorian terrace
- Three bedrooms
- Good sized garden
- Near to Ashley Down Primary School
- Great location
- Close to Gloucester Road
- Within walking distance to Fairfield Secondary School and Trinity Academy
- Scope to extend
- 995 sqft

A well presented three bedroom Victorian home conveniently located on the popular Rudthorpe Road in Horfield and sold with no onward chain.

The accommodation comprises main vestibule entrance with original stained glass windows and double doors leading into a spacious hallway, complete with a stripped wood floor and doors to all ground floor rooms. At the front of the property is the main reception room featuring a bay window with the original timber-framed sashes. Further features include cornice and stripped wood floorboards.

The adjacent second reception/dining room is complete with a stripped wood floor, cornice and a sash window overlooking the garden. The kitchen at the rear has a range of modern wall and base units with an integrated gas hob and a electric oven, space for freestanding appliances, and a door leading to the rear garden.

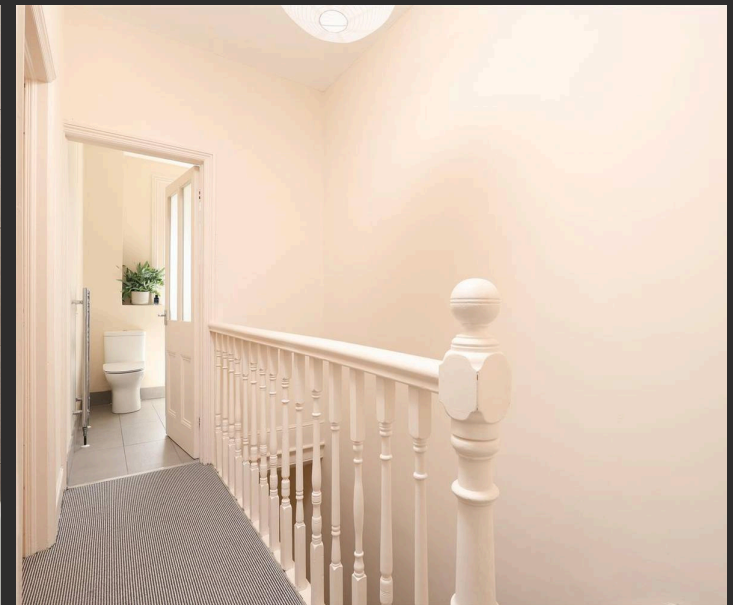
On the first floor are three bedrooms and the family bathroom. Bedroom one with bay window is located at the front of the house and benefits from fitted wardrobes and a dresser. Next door, bedroom two is



You can include any text here. The text can be modified upon generating your brochure.



You can include any text here. The text can be modified upon generating your brochure.

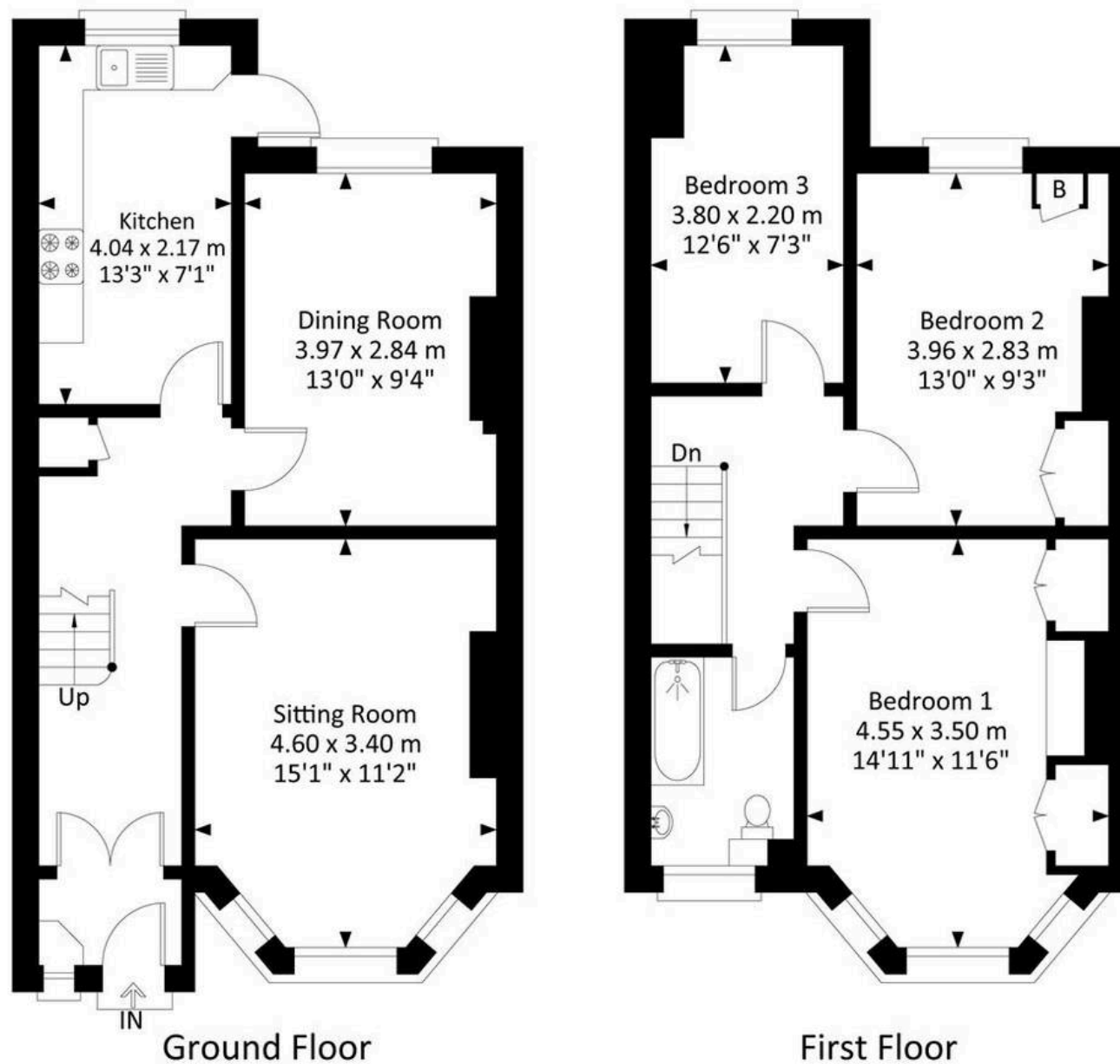


You can include any text here. The text can be modified upon generating your brochure.



15 Rudthorpe Road, Horfield, Bristol, BS7 9QG

Approximate Gross Internal Area = 92.46 sq m / 995.23 sq ft



Ground Floor

First Floor

Illustration for identification purposes only, measurements and approximate, not to scale.



Elephant Estate Agents

Elephant, 2 The Promenade Gloucester Road - BS7 8AL

01173700556 • bishopston@elephantlovesbristol.co.uk • www.elephantlovesbristol.co.uk/