



2 Edward Avenue, Sutton-In-Ashfield, NG17 4BW

Guide Price **£180,000**





2 Edward Avenue

Sutton-In-Ashfield

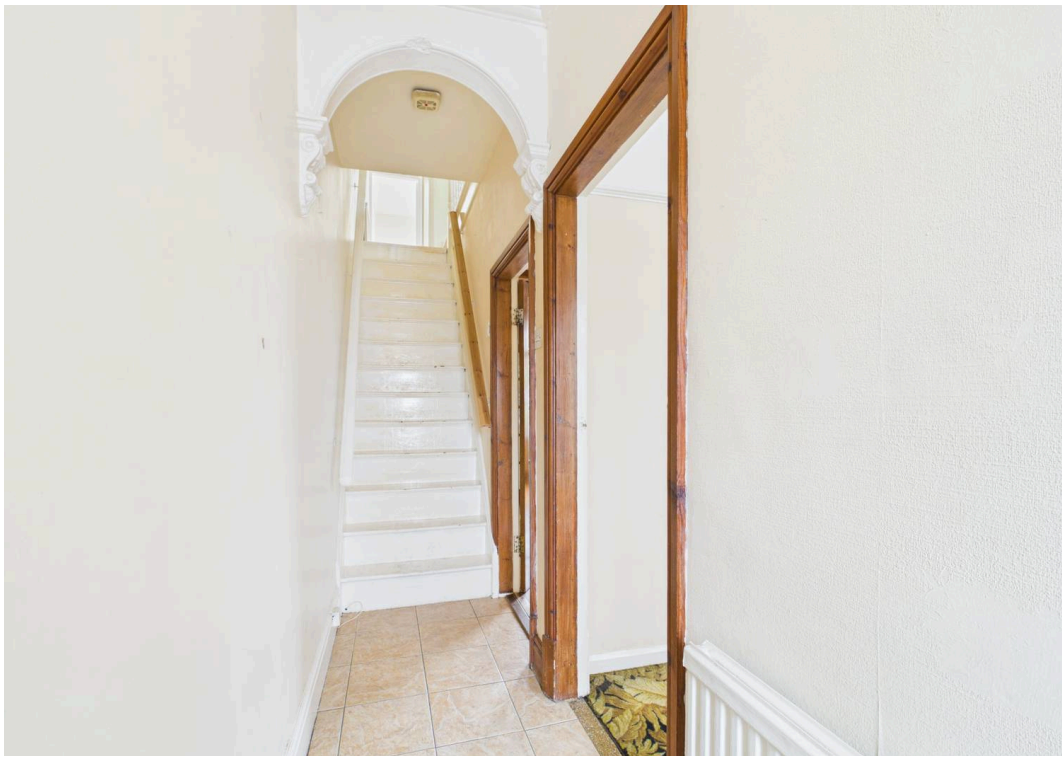
Council Tax band: A

Tenure: Freehold

EPC Energy Efficiency Rating: D

- Charming semi-detached home with no upward chain
- Four first-floor bedrooms
- Huge potential with scope to modernise and personalise
- A short walk from Sutton-in-Ashfield's amenities and transport links with a variety of schools nearby
- Two reception rooms (lounge and separate dining room with a feature stove burner)
- Generous breakfast kitchen with a useful downstairs pantry/store
- Versatile rear lobby/utility with an adjoining ground floor WC
- First floor shower room with a modern walk-in accessible enclosure
- Dropped kerb access to a generous garage providing secure parking or storage
- Established rear garden with lawn, mature planting and a feature pond plus outbuilding storage









Floor 0

Approximate total area⁽¹⁾

120.5 m²

1298 ft²

Reduced headroom

0.3 m²

3 ft²



Floor 1

(1) Excluding balconies and terraces

Reduced headroom

----- Below 1.5 m/5 ft

Calculations reference the RICS IPMS 3C standard. Measurements are approximate and not to scale. This floor plan is intended for illustration only.

GIRAFFE360





David James Estate Agents

43 Forest Street, Sutton-in-Ashfield - NG17 1DA

01623 554084 • sutton@david-james.com • www.david-james.com

These particulars are produced in good faith and are set out as a general guide only. Measurements are approximate and floor plans are for illustrative purposes only. Services have not been tested. We have established professional relationships with third-party suppliers for the provision of services to Clients, details of which can be found on the property listing page on our website.