



St. Helen's Drive

Hove

Guide Price £550,000 - £600,000



St. Helen's Drive, Hove

Ideally located in family-friendly Hangleton, a well-presented DETACHED BUNGALOW with THREE BEDROOMS, a sizeable WEST FACING REAR GARDEN, a DRIVEWAY, and GARAGE.

A well-presented and spacious detached bungalow enjoying an east/westerly aspect, allowing for plenty of natural light throughout the day.

The accommodation includes a sizeable lounge positioned to the rear of the property, leading through to the conservatory, along with a separate fully fitted kitchen, a shower room and an additional w/c. There are three bedrooms in total, comprising two good-sized doubles and a single bedroom, with a pleasant aspect over the green.

Outside, the well-established rear garden enjoys the sought-after westerly aspect and features a mature lawn, along with a lovely variety of shrubs, trees and plants. The property also benefits from a pretty front garden, a garage and a driveway.

The bungalow is pleasantly positioned overlooking leafy green St. Helen's Park.





In the Local Area

Overlooking leafy green St Helens Park, this property has easy access to Nevill Road, the A27 and A23.

Nearby, the South Downs and Devil's Dyke offer plenty of natural beauty and panoramic views, while Hove Park has an abundance of outdoor facilities close at hand ranging from tennis courts, a fingerprint maze and children's playground, to a café and miniature railway.

Regular bus services travel into the centre of Brighton and Hove, down to the seafront and out to Devil's Dyke, while both Preston Park and Hove mainline train stations provide convenient routes for commuters to London and Gatwick.

Further Information

This property is not in a controlled parking zone, and currently it's in Council Tax band E, charged at £3,152.65 for 2026/27.

EPC:

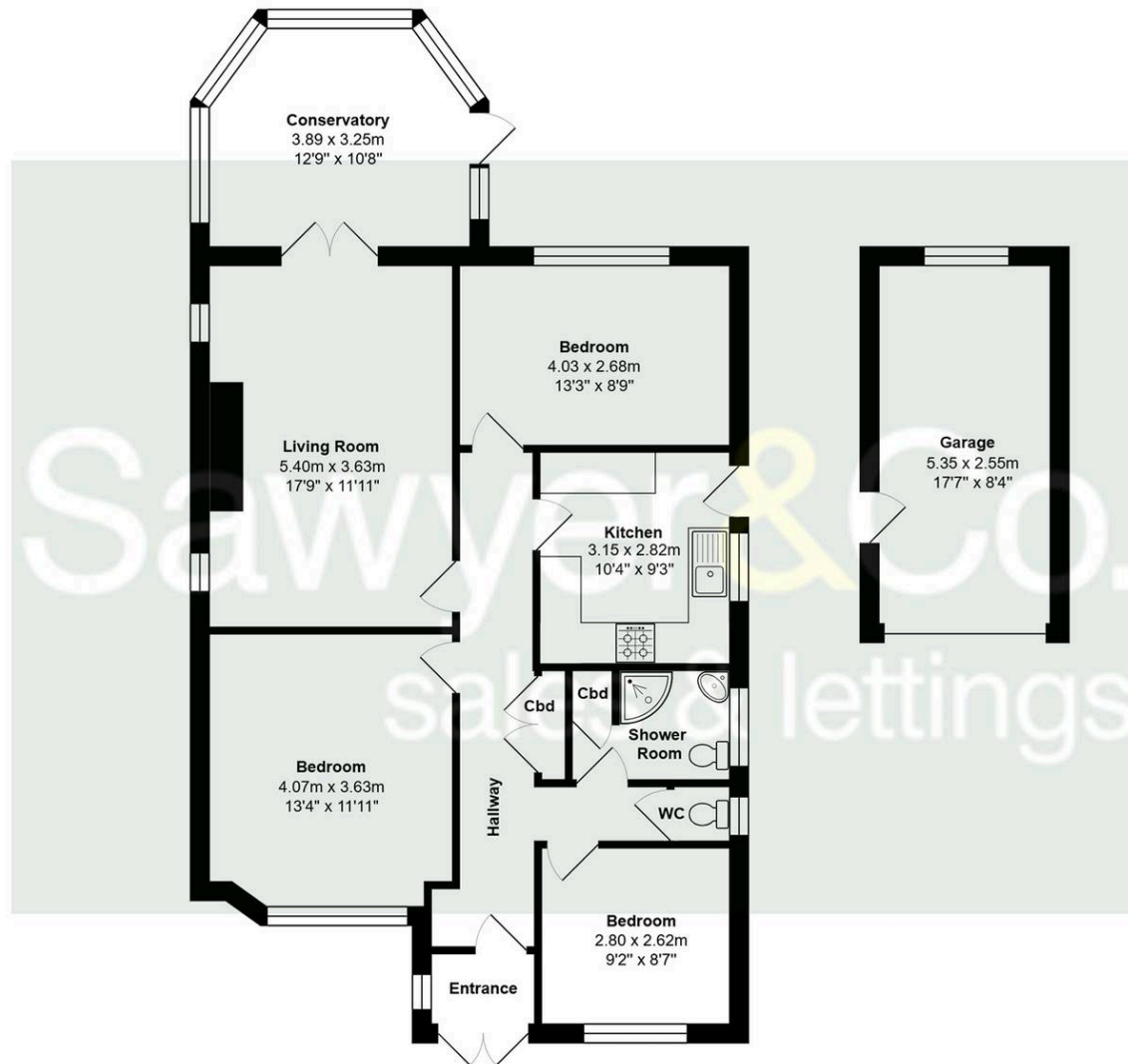
This information has been provided by the seller. Please obtain verification via your legal representative.











Total Area: 108.5 m² ... 1168 ft² (Including Garage)

Total Floor Area: 94.9 m²... 1022 ft² (Excluding Garage)

All measurements are approximate and for display purposes only.



Sawyer & Co- Hove

52 Church Road, Hove, BN3 2FN

01273 778844 • clientservices@sawyerandco.co.uk • www.sawyerandco.co.uk/

We wish to inform prospective purchasers that we have prepared these sales particulars as a general guide. We have not carried out a detailed survey, nor tested the services, appliances and specific fittings. Room sizes are approximate.