



135 Haunchwood Road, Nuneaton

Nuneaton

Offers Over £110,000



**SHELDON
BOSLEY
KNIGHT**

LAND AND
PROPERTY
PROFESSIONALS

135 Haunchwood Road

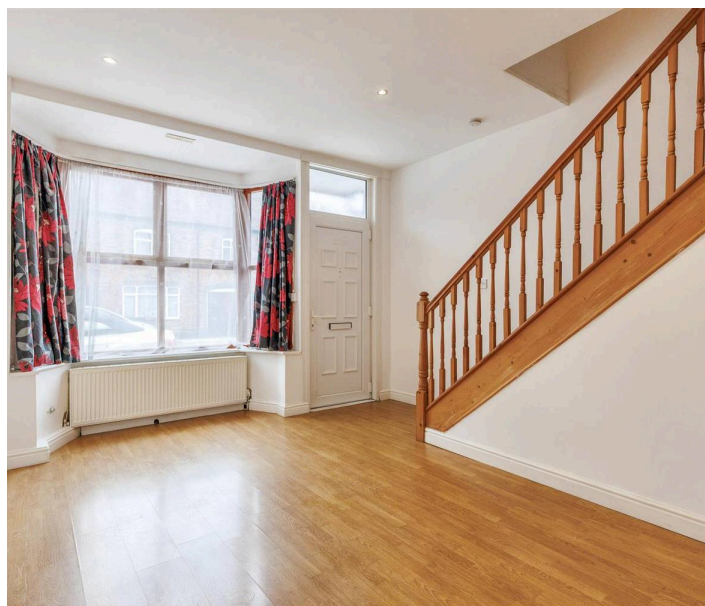
Nuneaton

Presenting a well-maintained one bedroom terraced house, this appealing property offers a comfortable and practical living space ideal for first time buyers or investors seeking a sound addition to their portfolio. Upon entering, you are welcomed into a spacious lounge. The kitchen is fitted with a range of modern units with incorporated hob and oven, offering ample storage and worktop space. Ascending to the first floor, you will find a generous double bedroom that benefits from natural light. The first floor bathroom has a white coloured suite. Throughout the property there is double glazing and mains gas central heating. The layout is both practical and inviting, making the most of the available space and offering flexibility to suit a variety of lifestyles. Outside there is a small enclosed frontage and to the rear there is a small enclosed yard space. This property is offered with no upward chain, allowing for a straightforward and timely transaction. Whether you are looking to take your first step onto the property ladder or add a dependable rental property to your investment portfolio. Early viewing is highly recommended to fully appreciate the quality and potential of this charming home.

Council Tax band: A

Tenure: Freehold

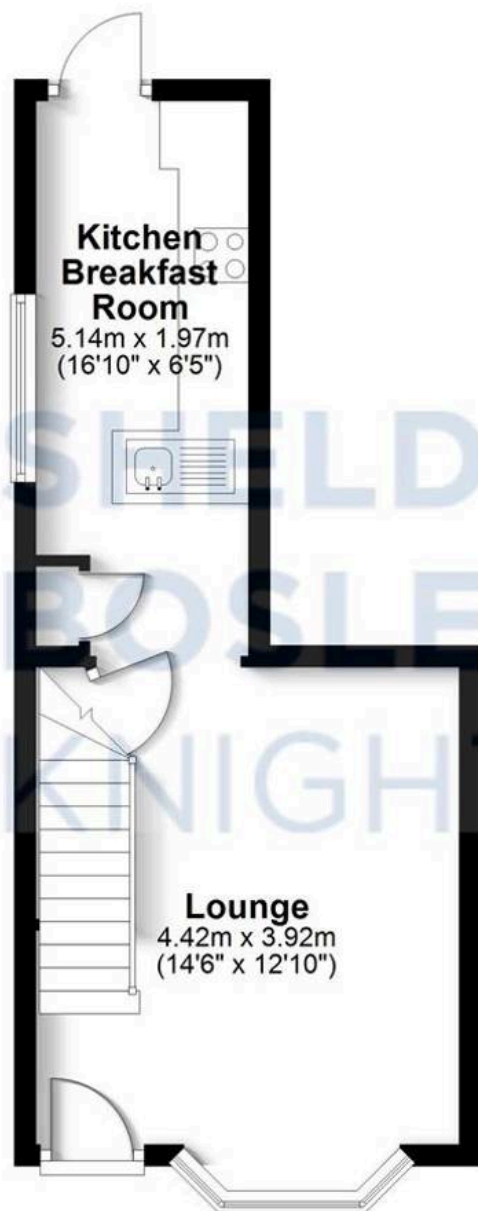
- Terrace House
- Lounge
- Kitchen With Hob & Oven
- One Double Bedroom
- First Floor Bathroom
- Gas Central Heating
- Double Glazing





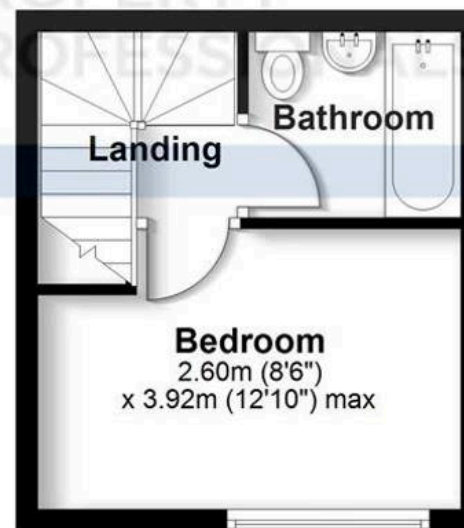
Ground Floor

Approx. 27.9 sq. metres (300.3 sq. feet)



First Floor

Approx. 17.3 sq. metres (186.5 sq. feet)



Total area: approx. 45.2 sq. metres (486.8 sq. feet)

All efforts have been made to ensure the measurements are accurate on this floor plan, however these are for guidance purposes only.
Plan produced using PlanUp.



Sheldon Bosley Knight Nuneaton

Sheldon Bosley Knight, 39 Newdegate Street, Nuneaton - CV11 4ER

02476374949 • nuneaton@sheldonbosleyknight.co.uk • www.sheldonbosleyknight.co.uk/